

Job Name/Location:

Tag #:

Date:

For: File Resubmit

PO No.:

Approval Other

Architect:

GC:

Engr:

Mech:

Rep:

(Company)

(Project Manager)

**LH248HV4****Single Zone High Static Ducted**

Outdoor Unit (ODU) - LUU249HV, Indoor Unit (IDU) - LHN248HV

**Performance:****Cooling:**

Cooling (Min~Rated~Max, Btu/h)	9,600 ~ 24,000 ~ 27,000
SEER2	16.85
EER2	11.70

SEER - Seasonal Energy Efficiency Ratio

EER - Energy Efficiency Ratio

**Heating:**

Heating (Min~Rated~Max, Btu/h)	10,800 ~ 27,000 ~ 30,000
HSPF2	9.00
Max Heating @ Indoor 70° DB (Btu/h)	
Outdoor 17°F WB	26,000
Outdoor 5°F WB*	23,600
Outdoor -4°F WB	20,760

HSPF - Heating Seasonal Performance Factor

\* The Capacities at 5°F does not refer to H42 testing conditions.

Cooling Nominal Test Conditions:

Indoor: 80°F DB / 67°F WB

Outdoor: 95°F DB / 75°F WB

Heating Nominal Test Conditions:

Indoor: 70°F DB / 60°F WB

Outdoor: 47°F DB / 43°F WB

**Electrical:**

Power Supply <sup>1</sup> (V/Hz/Ø)	208-230/60/1
------------------------------------	--------------

**Outdoor Unit:**

MOP (A)	30
MCA (A)	20
Cooling / Heating Rated Amps (A)	16.7 / 16.7
Compressor(A)	13.5
Fan Motor (IDU + ODU) (A)	1.6 + 1.6
Cooling Power Input (kW)	0.72 ~ 2.05 ~ 4.00
Heating Power Input (kW)	0.58 ~ 2.26 ~ 3.10

MOP - Maximum Overcurrent Protection

MCA - Minimum Circuit Ampacity

**Piping:**

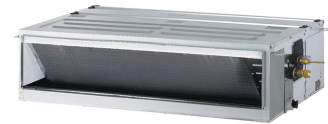
Liquid Line (in., O.D.)	3/8
Vapor Line (in., O.D.)	5/8
Additional Refrigerant (oz./ft.)	0.43
Max. Pipe Length <sup>2</sup> (ft.)	164
Piping Length (no add'l refriger., ft.)	24.6
Max. Elevation (ft.)	98.4

**Features:**

- ESP control
- Hot start
- Internal Condensate Pump
- Inverter (variable speed fan)
- Auto restart
- Control lock
- Group control
- Timer (on/off)
- Sleep Mode fan
- Optional Wi-Fi Control
- Optional Aux Heater relay kit

**Optional Accessories:**

- ☐ MultiSITE™ CRC2 - PREMTBVC2
- ☐ Programmable Remote Controller - PREMTB100
- ☐ Delux Remote Controller - PREMTB200
- ☐ Dry Contact 3rd Party Thermostat - PDRYCB320
- ☐ Aux Heater relay kit - PRARH1
- ☐ Drain Pan Heater - PQSH1200
- ☐ AC Smart 5 - PACS5A000
- ☐ Low Ambient Kit -40°F cooling PQCA0, PAG-HS6/PAG-HS7 Wind Guards
- ☐ Without PQCA0 Cooling to 0°F
- ☐ Wi-Fi Module - PWFMD200

**Operating Range:****Outdoor Unit:**

Cooling (°F DB)	5 to 118
Heating (°F WB)	-4 to 64

**Indoor Unit:**

Cooling (°F WB)	57 to 77
Heating (°F DB)	59 to 81

**System Data:**

Refrigerant Type	R410A
Refrigerant Control	EEV
Refrigerant Charge (lbs.)	4.41
ODU Sound Pressure Max (Cool / Heat) ±3 dB(A) <sup>3</sup>	48 / 52
IDU Sound Pressure (H/M/L) ±3 dB(A) <sup>3</sup>	37 / 35 / 34
ODU Net / Shipping Weight (lbs.)	130.0 / 143.3
IDU Net / Shipping Weight (lbs.)	58.6 / 71.9
Heat Exchanger Coating	GoldFin™

**Fan:**

ODU Type	Propeller
IDU Type	Sirocco
Fan Speeds (Fan/Cool/Heat)	3 / 3 / 3
Fan Quantity (ODU + IDU)	1 + 1
Motor/Drive	Brushless Digitally Controlled/Direct
ODU Air Circulation (CFM)	2,048
IDU Air Circulation (H/M/L) (CFM)	777 / 706 / 636
Default ESP (in wg)	0.24
Minimum ESP/Fan Setting Value <sup>4</sup>	0.1 / 96
Maximum ESP/Fan Setting Value <sup>4</sup>	0.59 / 140
Dehumidification Rate (pts/hr)	5.1

**Notes:**

1. Acceptable operating voltage: 187V-253V.
2. Piping lengths are equivalent.
3. Sound Pressure levels are tested in an anechoic chamber under ISO Standard 3745.
4. Maximum static pressure may result in reduced airflow (CFM).
5. All communication / connection (power) cable from the outdoor unit to the indoor unit is field supplied and is to be minimum four-conductor, 14 AWG, stranded, shielded or unshielded (if shielded, it must be grounded to the chassis of the outdoor unit only), and must comply with applicable local and national codes.
6. See Engineering Manual for sensible and latent capacities.
7. Power wiring cable size must comply with the applicable local and national code.
8. The indoor unit comes with a dry helium charge.
9. This data is rated 0 ft. above sea level, with 24.6 ft. of refrigerant line and a 0 ft. level difference between outdoor and indoor units.
10. Must follow installation instructions in the applicable LG installation manual.



For a complete list of available accessories, contact your LG representative.

For continual product development, LG reserves the right to change specifications without notice.

© LG Electronics Canada, Inc., North York, ON. All rights reserved. "LG Life's Good" is a registered trademark of LG Corp. /www.lgdfs.ca

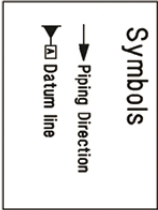
SB\_SZ\_High\_Static\_Ducted\_LH248HV4\_2023\_01

Page 1 of 3

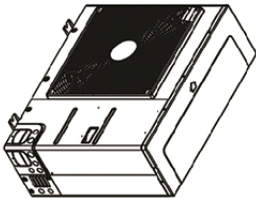
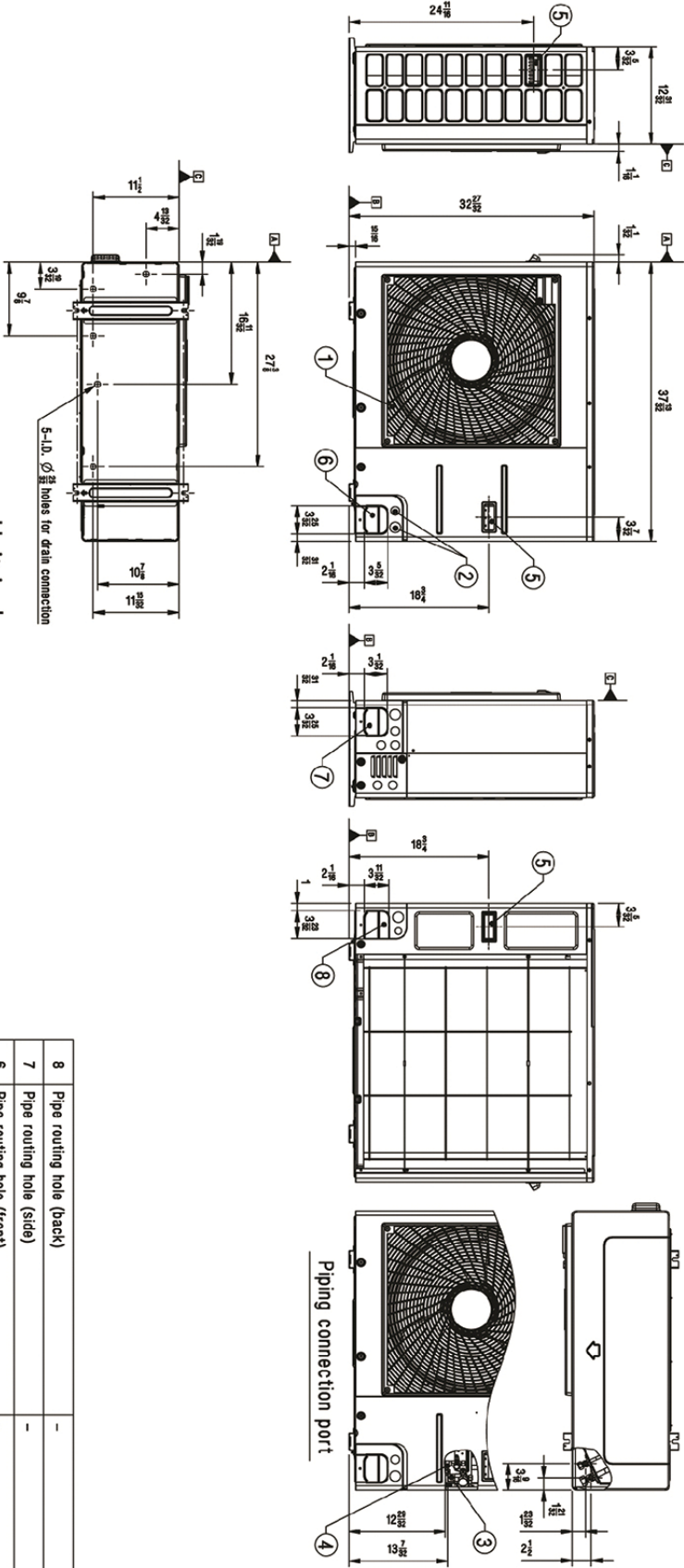
**LH248HV4**  
Single Zone High Static Ducted  
Outdoor Unit (ODU) - LUU249HV, Indoor Unit (IDU) - LHN248HV



Tag No.: \_\_\_\_\_  
Date: \_\_\_\_\_  
PO No.: \_\_\_\_\_



Unit: inch

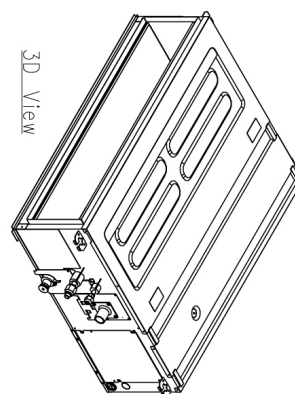
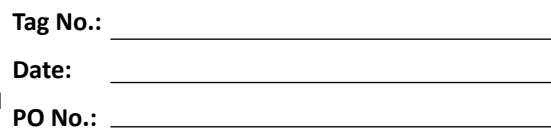


No.	Part Name	Description
8	Pipe routing hole (back)	-
7	Pipe routing hole (side)	-
6	Pipe routing hole (front)	-
5	Handle	-
4	Liquid Pipe Connection	Flare joint
3	Gas Pipe Connection	Flare joint
2	Power and communication cable Hole	-
1	Air Outlet	-

## LH248HV4

Single Zone High Static Ducted

Outdoor Unit (ODU) - LUU249HV, Indoor Unit (IDU) - LHN248HV



9	Control Cover	—
8	Air Filters	—
7	Air Outlet	—
6	Air Inlet	—
5	Power Cable Hole	—
4	Remote and Communication Cable Hole	—
3	Drain pipe connection	—
2	Liquid pipe connection	—
1	Gas pipe connection	—
No.	Part Name	Description