

Job Name/Location:

Tag #:

Date:

For: File Resubmit

PO No.:

Approval Other

Architect:

GC:

Engr:

Mech:

Rep:

(Company)

(Project Manager)

**LH488HHV**

Single Zone High Static Ducted with LGRED°

Outdoor Unit (ODU) - LUU480HHV, Indoor Unit (IDU) - LHN488HV

**Performance:****Cooling:**

Cooling Capacity (Min~Rated~Max, Btu/h)	18,400 ~ 46,000 ~ 55,000
SEER	18.7
EER	12.5

SEER - Seasonal Energy Efficiency Ratio

EER - Energy Efficiency Ratio

**Heating:**

Heating Capacity (Min~Rated~Max, Btu/h)	19,000 ~ 50,000 ~ 60,000
HSPF	11.2
Max Heating @ Indoor 70° DB (Btu/h)	
Outdoor 17°F WB	53,500
Outdoor 5°F WB	50,000
Outdoor -4°F WB	43,590
Outdoor -13°F WB	36,010

HSPF - Heating Seasonal Performance Factor

Cooling Nominal Test Conditions:

Indoor: 80°F DB / 67°F WB

Outdoor: 95°F DB / 75°F WB

Heating Nominal Test Conditions:

Indoor: 70°F DB / 60°F WB

Outdoor: 47°F DB / 43°F WB

**Electrical:**

Power Supply <sup>1</sup> (V/Hz/Ø)	208-230/60/1
MOP (A)	40
MCA (A)	32
Cooling / Heating Rated Amps (A)	16.3 / 20.2
Compressor(A)	22.0
Fan Motor (IDU + ODU) (A)	1.3 + (2x1.6)
Cooling Power Input (min~rated~max,kW)	1.40 ~ 3.68 ~ 5.75
Heating Power Input (min~rated~max,kW)	1.40 ~ 4.55 ~ 6.20
Locked Rotor Amps (A)	33

MOP - Maximum Overcurrent Protection

MCA - Minimum Circuit Ampacity

**Piping:**

Installed Liquid Pipe (in., O.D.)	3/8 Flare
Installed Vapor Pipe (in., O.D.)	5/8 Flare
IDU Liquid Connection (in., O.D.)	3/8 Flare
IDU Vapor Connection (in., O.D.)	5/8 Flare
Additional Refrigerant (oz./ft.)	0.43
Min./Max. Pipe Length <sup>2</sup> (ft.)	16.4 / 246
Piping Length (no add'l refrig., ft.)	24.9
Max. Elevation (ft.)	98.4

**Features:**

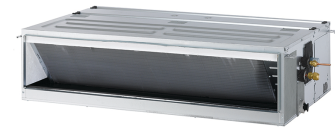
- Auto ESP function
- Hot start
- Internal condensate pump
- ODU drain pan heater
- Inverter (variable speed fan)
- Auto restart
- Control lock
- Group control
- Timer (on/off)
- Sleep mode
- Optional Wi-Fi Control
- Night quiet function
- IDU compatible with Multi F ODU's (24k, 36k models)

**Required Accessories:**

- ☐ Controller (any LG wired remote controller)

**Optional Accessories:**

- ☐ MultiSITE™ CRC1 - PREMTBVCO
- ☐ MultiSITE CRC1+ - PREMTBVC1
- ☐ Standard RS3 Controller- PREMTB100
- ☐ AC Smart 5 - PACS5A000
- ☐ Simple Controller - PREMT000U
- ☐ Wi-Fi module - PWFMD200
- ☐ ACP 5 - PACP5A000
- ☐ Low Ambient Kit- PAG-HS4/PAG-HS5 (Cooling operation to -4°F)<sup>11</sup>
- ☐ Dynamic V8 2VL Low Profile Air Cleaner - ZPLMV201A
- ☐ Dry Contact (Simple) - PDRYCB100
- ☐ Dry Contact (3rd Party) - PDRYCB320
- ☐ Dry Contact (Setback) - PDRYCB400
- ☐ PI-485 - PMNFP14A1
- ☐ Aux Heater Relay Kit - PRARH1
- ☐ High Efficiency Filter Box - ZFBXM301A

**Operating Range:****Outdoor Unit:**

Cooling (°F DB)	5 to 118
Heating (°F WB)	-13 to 64

**Indoor Unit:**

Cooling (°F WB)	57 to 77
Heating (°F DB)	59 to 81

**System Data:**

Refrigerant Type	R410A
Refrigerant Control	EEV
Refrigerant Charge (lbs.)	9.3
ODU Sound Pressure Max (Cool / Heat) ±1 dB(A) <sup>3</sup>	54 / 56
IDU Sound Pressure (H/M/L) ±1 dB(A) <sup>3</sup>	42 / 40 / 39
ODU Net / Shipping Weight (lbs.)	210.9 / 234.1
IDU Net / Shipping Weight (lbs.)	95.9 / 112.9
Heat Exchanger Coating	GoldFin™

**Fan:**

ODU / IDU Fan Type	Propeller/ Sirocco
Fan Speeds (Fan/Cool/Heat)	3 / 3 / 3
Fan Quantity (ODU + IDU)	2 + 2
Motor/Drive	Brushless Digitally Controlled/Direct
Maximum ODU Air Volume (CFM)	4,238
IDU Air Volume (H/M/L) (CFM)	1765 / 1589 / 1412
Dehumidification Rate (pts/hr)	7.61
IDU External Static Pressure (ESP)	
Operating Range (min ~ default ~ max) (in-wg)	0.16 ~ 0.24 ~ 0.59

**Notes:**

1. Acceptable operating voltage: 187V-253V.
2. Piping lengths are equivalent.
3. Sound Pressure levels are tested in an anechoic chamber under ISO Standard 3745.
4. Maximum static pressure may result in reduced airflow (CFM).
5. All communication / connection (power) cable from the outdoor unit to the indoor unit is field supplied and is to be minimum four-conductor, 14 AWG, stranded, shielded or unshielded (if shielded, it must be grounded to the chassis of the outdoor unit only), and must comply with applicable local and national codes.
6. See Engineering Manual for sensible and latent capacities.
7. Power wiring cable size must comply with the applicable local and national code.
8. The indoor unit comes with a dry helium charge.
9. This data is rated 0 ft. above sea level, with 24.6 ft. of refrigerant line and a 0 ft. level difference between outdoor and indoor units.
10. Must follow installation instructions in the applicable LG installation manual.
11. If the optional low ambient kit is used, one wind baffle is required for each ODU fan.



For a complete list of available accessories, contact your LG representative.

For continual product development, LG reserves the right to change specifications without notice.

© LG Electronics Canada, Inc., North York, ON. All rights reserved. "LG Life's Good" is a registered trademark of LG Corp. /www.lgdfs.ca

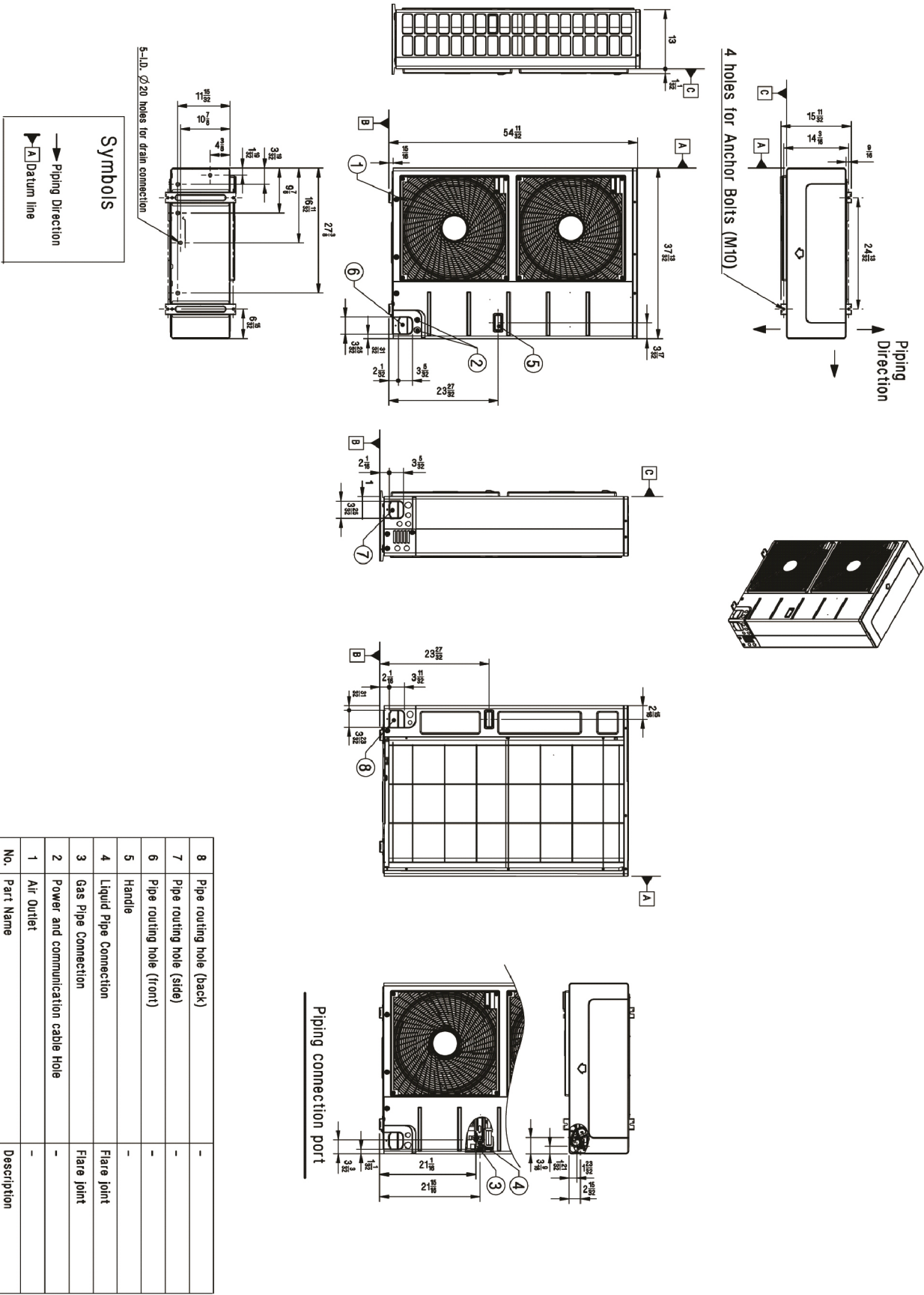
SB\_SZ\_High\_Static\_Ducted\_LH488HHV\_2020\_09\_23\_150516

Page 1 of 3

**LH488HHV**  
Single Zone High Static Ducted with LGRED°  
Outdoor Unit (ODU) - LUU480HHV, Indoor Unit (IDU) - LHN488HV



Tag No.: \_\_\_\_\_  
Date: \_\_\_\_\_  
PO No.: \_\_\_\_\_

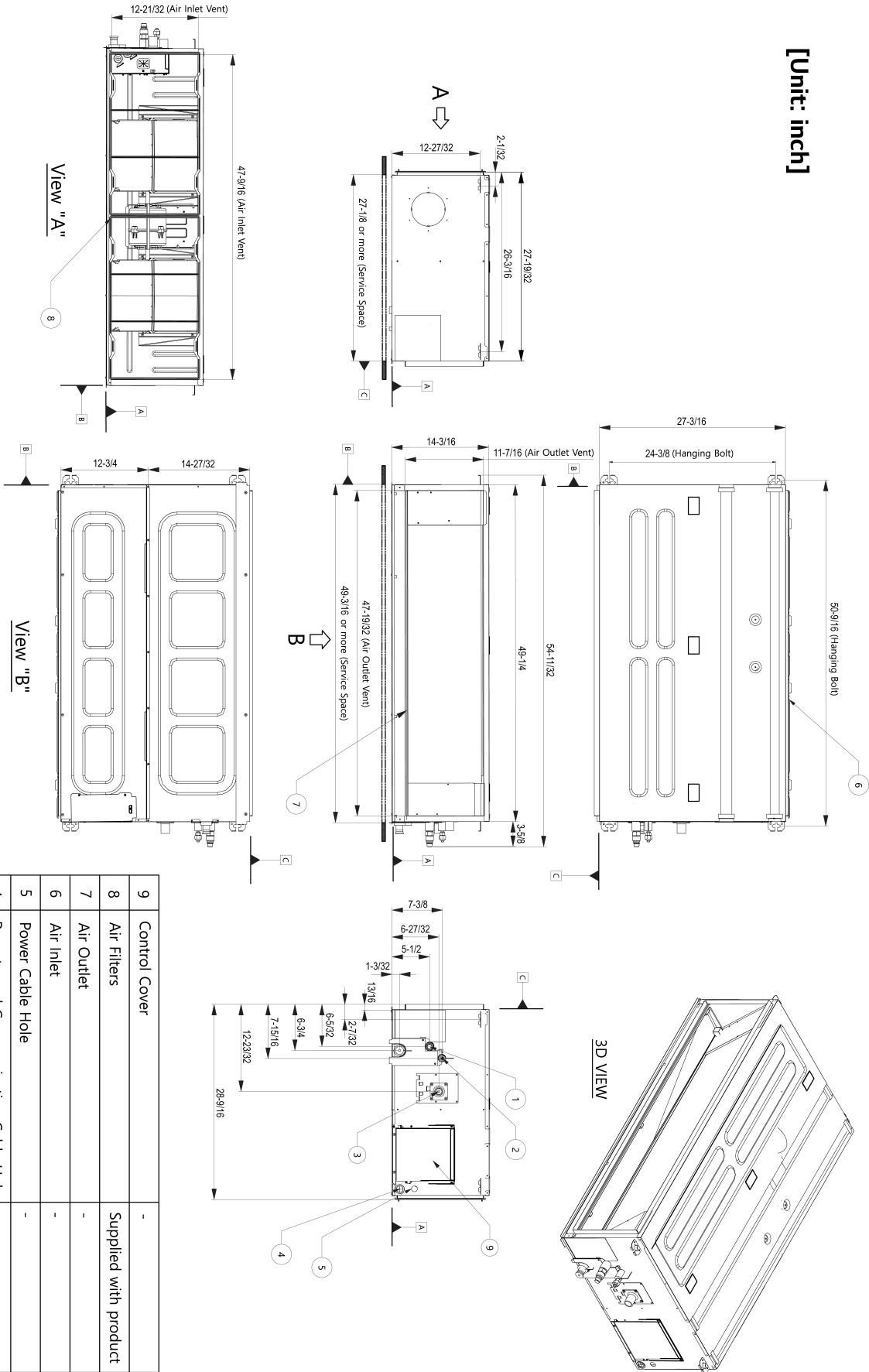


**LH488HHV**  
Single Zone High Static Ducted with LGRED°  
Outdoor Unit (ODU) - LUU480HHV, Indoor Unit (IDU) - LHN488HV



Tag No.: \_\_\_\_\_  
Date: \_\_\_\_\_  
PO No.: \_\_\_\_\_

[Unit: inch]



9	Control Cover	-
8	Air Filters	Supplied with product
7	Air Outlet	-
6	Air Inlet	-
5	Power Cable Hole	-
4	Remote and Communication Cable Hole	-
3	Drain pipe connection	-
2	Liquid pipe connection	-
1	Gas pipe connection	-
No.	Part Name	Description