

Job Name/Location:

Tag #:

Date: _____ For: File Resubmit
 PO No.: _____ Approval Other _____
 Architect: _____ GC: _____
 Engr: _____ Mech: _____
 Rep: _____
 (Company) _____ (Project Manager) _____



ARUN313DTE4 (a) ARUN144DTE4
 Multi V™ IV Heat Pump (b) ARUN168DTE4
 26.0 Ton Outdoor Unit



Performance:

Cooling Mode:

Nominal Capacity (Btu/h)	312,000
Power Input ¹ (kW)	21.9

Heating Mode:

Nominal Capacity (Btu/h)	351,000
Power Input ¹ (kW)	25.12

Nominal Capacity is outside the scope of AHRI Standard 1230 and based on the following conditions:

Indoor: 80°F DB / 67°F WB Indoor: 70°F DB
 Outdoor: 95°F DB Outdoor: 47°F DB / 43°F WB

Electrical:

	(a) ARUN144DTE4	(b) ARUN168DTE4
Power Supply (V/Hz/Ø)	460/60/3	460/60/3
MOP (A)	40	45
MCA (A)	31.6	33.9
Rated Amps (A)	28.4	30.4
Compressor A (A)	12.9	13.9
Compressor B (A)	12.9	13.9
Fan (A)	2.6	2.6

Piping:

	(a) ARUN144DTE4	(b) ARUN168DTE4
Refrigerant Charge (lbs)	23.6	23.6
Liquid Line ² (in, OD)	1/2	5/8
Vapor Line ² (in, OD)	1-1/8	1-1/8

Standard Features:

- HiPOR (high pressure oil return)
- Smart Oil Control
- Split Frame Defrost
- Night Quiet Operation
- Fault Detection and Diagnosis

Required Accessories:

- ARCNN21 (frame connector Y-branch)

Optional Accessories:

- Air Guide - PRAGX3S0 (4 required)
- Low Ambient Baffle Kit - ZLABKA03A (2 required), Control Kit - PRVC2 (1 per svstem)

****(-9.9°F achieved only when all IDU's are operating in cooling mode.)**

Operating Range:

Cooling (°F DB)**	14-122
Heating (°F WB)	-13 - 61

Unit Data:

Refrigerant Type	R410A
Refrigerant Control	EEV
Max Number of Indoor Units ³	52
Sound Pressure ⁴ dB(A)	62.5
Net Unit Weight (a) + (b) (lbs)	628 + 628
Shipping Weight (a) + (b) (lbs)	661 + 661
Communication Cable ⁵ (No. x AWG)	2 x 18
Heat Exchanger Coating	GoldFin™

Compressor:

Type	HSS DC Scroll
Quantity	4
Oil / Type	PVE/FVC68D

Fan:

Type	Propeller
Quantity (a) + (b)	4
Motor/Drive	Brushless Digitally Controlled/Direct
Air Flow Rate (a) + (b) (CFM)	20,400

Notes:

1. For AHRI ratings, refer to the AHRI website <http://www.ahridirectory.org>.
2. For main pipe segment size, refer to the LATS Multi V tree diagram.
3. The combination ratio must be between 50-130%.
4. Sound Pressure levels are tested in an anechoic chamber under ISO Standard 3745 for the combination of outdoor units.
5. All communication cable to be minimum 18 AWG, 2-conductor, stranded, shielded and must comply with applicable local and national code. Cables terminate at each frame.
6. Nominal data is rated 0 ft above sea level, with 25 ft of refrigerant line per indoor unit and a 0 ft level difference between outdoor and indoor units. All capacities are net with a combination ratio between 95-105%.
7. Power wiring cable size must comply with the applicable local and national code. Cables terminate at each frame.
8. The voltage tolerance is 414-528V.
9. The order of each of these units on the submittal (i.e., A+B) do not represent the installation order. Highest capacity unit is used as the Master, followed by the next smaller size as Slave 1 and so on.



Job Name/Location:

ARUN313DTE4
 Multi V™ IV Heat Pump
 26.0 Ton Outdoor Unit

(a) ARUN144DTE4

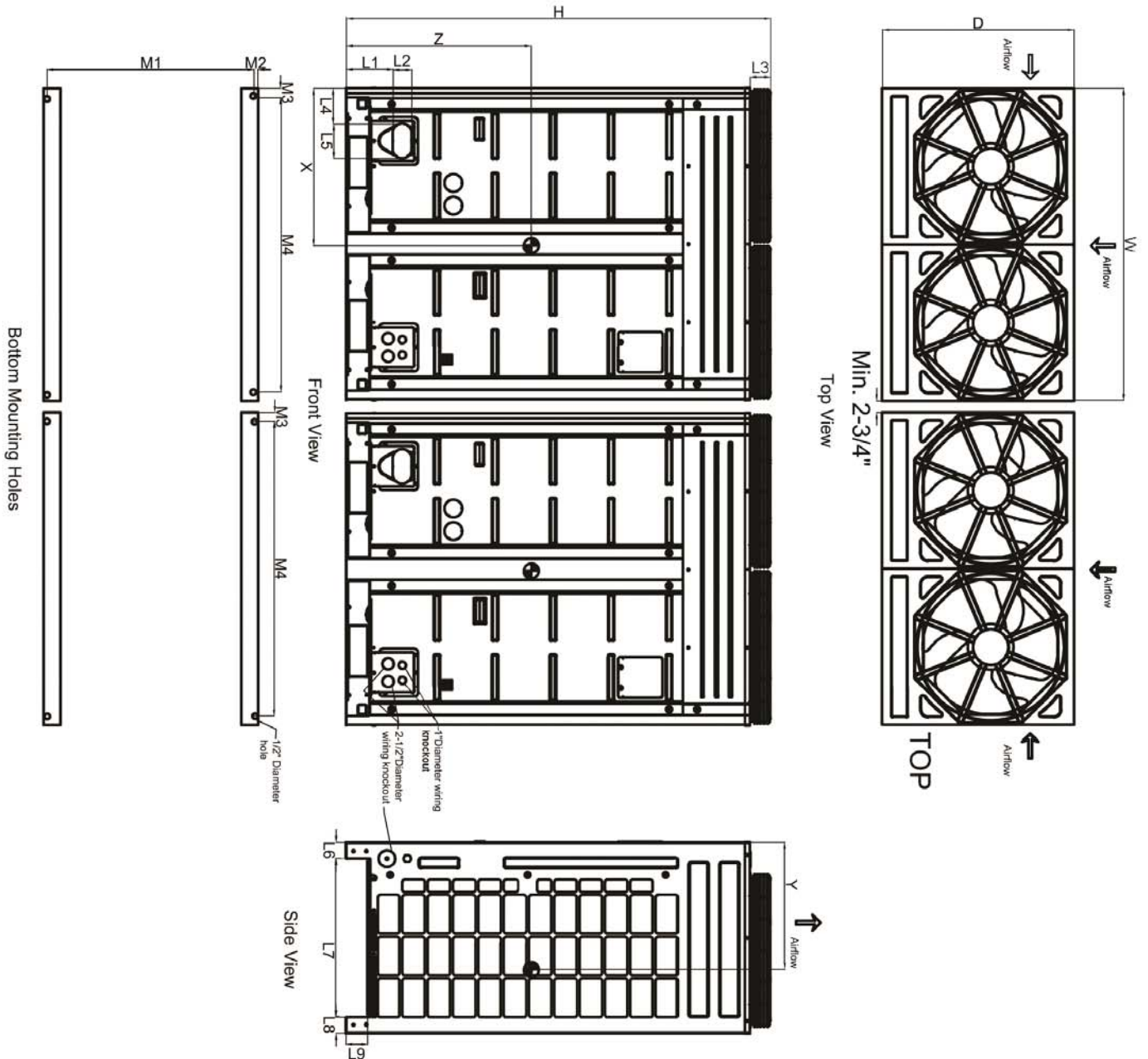
(b) ARUN168DTE4



Tag #:

Date:

PO No.:



W	48-13/16"
D	29-15/16"
H	66-1/8"
L1	7-1/4"
L2	2-15/16"
L3	3-1/8"
L4	5-1/2"
L5	5-3/8"
L6	2-9/16"
L7	24-3/16"
L8	2-9/16"
L9	3-5/16"
M1	29-1/16"
M2	7/16"
M3	2-5/8"
M4	43-3/8"

Center of Gravity

X	24-3/4"
Y	21-9/16"
Z	29-7/8"

Note - All dimensions have a tolerance of ± 0.25 in.



= Center of Gravity