

Job Name/Location:

Tag #:

Date: \_\_\_\_\_ For:  File  Resubmit  
 PO No.: \_\_\_\_\_  Approval  Other \_\_\_\_\_  
 Architect: \_\_\_\_\_ GC: \_\_\_\_\_  
 Engr: \_\_\_\_\_ Mech: \_\_\_\_\_  
 Rep: \_\_\_\_\_  
 (Company) \_\_\_\_\_ (Project Manager) \_\_\_\_\_



**ARUN337BTE4** (a) ARUN168BTE4  
 Multi V™ IV Heat Pump (b) ARUN168BTE4  
 28.0 Ton Outdoor Unit



**Performance:**

**Cooling Mode:**

Nominal Capacity (Btu/h)	336,000
Power Input <sup>1</sup> (kW)	24.52

**Heating Mode:**

Nominal Capacity (Btu/h)	378,000
Power Input <sup>1</sup> (kW)	28.54

Nominal Capacity is outside the scope of AHRI Standard 1230 and based on the following conditions:

Indoor: 80°F DB / 67°F WB      Indoor: 70°F DB  
 Outdoor: 95°F DB                  Outdoor: 47°F DB / 43°F WB

**Electrical:**

	(a) ARUN168BTE4	(b) ARUN168BTE4
Power Supply (V/Hz/Ø)	208-230/60/3	208-230/60/3
MOP (A)	70	70
MCA (A)	52.5	52.5
Rated Amps (A)	47.4	47.4
Compressor A (A)	20.7	20.7
Compressor B (A)	20.7	20.7
Fan (A)	6.0	6.0

**Piping:**

	(a) ARUN168BTE4	(b) ARUN168BTE4
Refrigerant Charge (lbs)	23.6	23.6
Liquid Line <sup>2</sup> (in, OD)	5/8	5/8
Vapor Line <sup>2</sup> (in, OD)	1-1/8	1-1/8

**Standard Features:**

- HiPOR (high pressure oil return)
- Smart Oil Control
- Split Frame Defrost
- Night Quiet Operation
- Fault Detection and Diagnosis

**Required Accessories:**

- ARCNN21 (frame connector Y-branch)

**Optional Accessories:**

- Air Guide - PRAGX3S0 (4 required)
- Low Ambient Baffle Kit - ZLABKA03A (2 required), Control Kit - PRVC2 (1 per svstem)

**\*\*(-9.9°F achieved only when all IDU's are operating in cooling mode.)**

**Operating Range:**

Cooling (°F DB)**	14-122
Heating (°F WB)	-13 - 61

**Unit Data:**

Refrigerant Type	R410A
Refrigerant Control	EEV
Max Number of Indoor Units <sup>3</sup>	55
Sound Pressure <sup>4</sup> dB(A)	62.5
Net Unit Weight (a) + (b) (lbs)	628 + 628
Shipping Weight (a) + (b) (lbs)	661 + 661
Communication Cable <sup>5</sup> (No. x AWG)	2 x 18
Heat Exchanger Coating	GoldFin™

**Compressor:**

Type	HSS DC Scroll
Quantity	4
Oil / Type	PVE/FVC68D

**Fan:**

Type	Propeller
Quantity (a) + (b)	4
Motor/Drive	Brushless Digitally Controlled/Direct
Air Flow Rate (a) + (b) (CFM)	20,400

**Notes:**

- 1.For AHRI ratings, refer to the AHRI website <http://www.ahridirectory.org>.
- 2.For main pipe segment size, refer to the LATS Multi V tree diagram.
- 3.The combination ratio must be between 50-130%.
- 4.Sound Pressure levels are tested in an anechoic chamber under ISO Standard 3745 for the combination of outdoor units.
- 5.All communication cable to be minimum 18 AWG, 2-conductor, stranded, shielded and must comply with applicable local and national code. Cables terminate at each frame.
- 6.Nominal data is rated 0 ft above sea level, with 25 ft of refrigerant line per indoor unit and a 0 ft level difference between outdoor and indoor units. All capacities are net with a combination ratio between 95-105%.
- 7.Power wiring cable size must comply with the applicable local and national code. Cables terminate at each frame.
- 8.The voltage tolerance is ± 10%.
- 9.The order of each of these units on the submittal (i.e., A+B) do not represent the installation order. Highest capacity unit is used as the Master, followed by the next smaller size as Slave 1 and so on.



Job Name/Location:

**ARUN337BTE4**  
Multi V™ IV Heat Pump  
28.0 Ton Outdoor Unit

(a) ARUN168BTE4

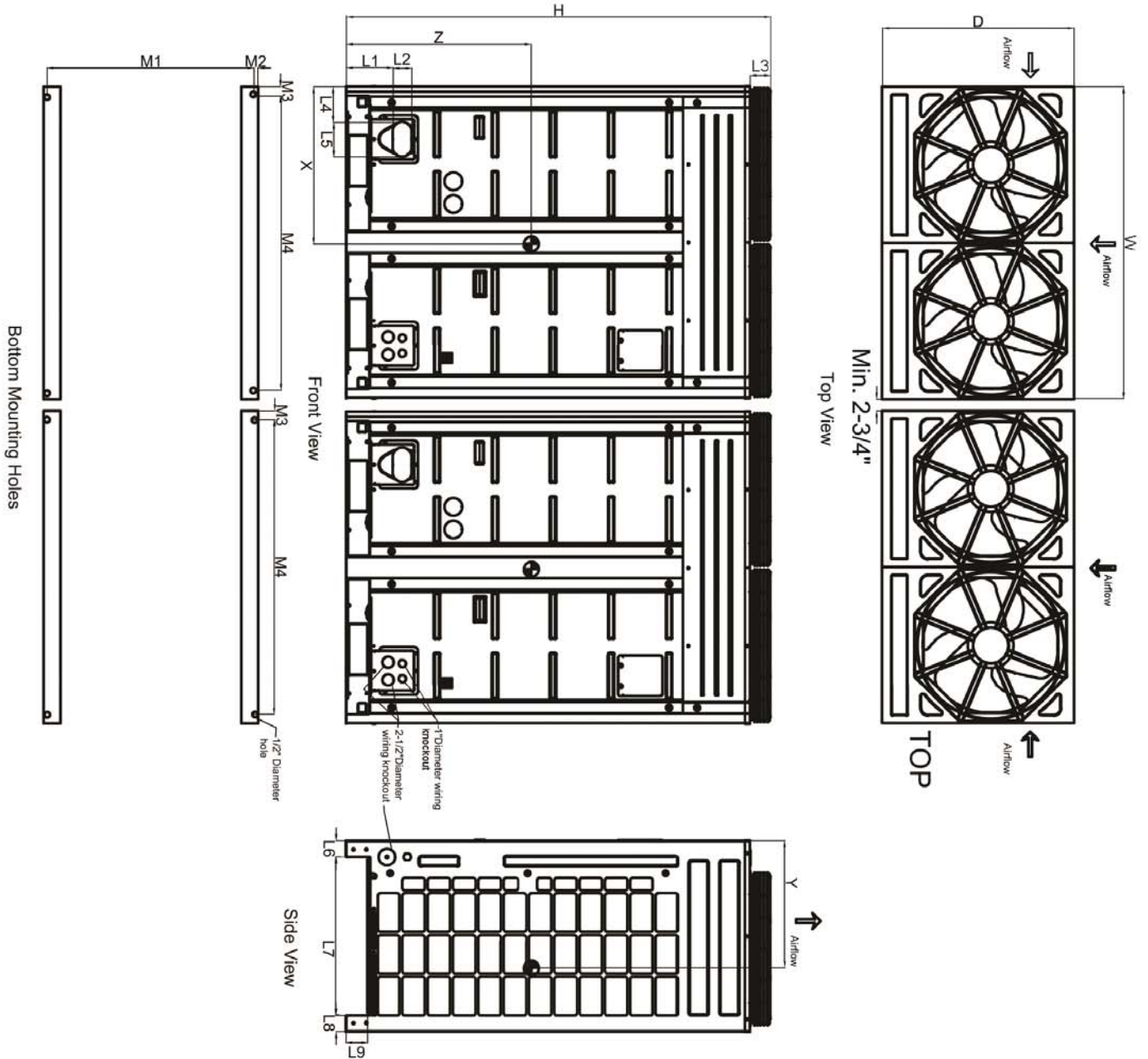
(b) ARUN168BTE4



Tag #:

Date:

PO No.:



W	48-13/16"
D	29-15/16"
H	66-1/8"
L1	7-1/4"
L2	2-15/16"
L3	3-1/8"
L4	5-1/2"
L5	5-3/8"
L6	2-9/16"
L7	24-3/16"
L8	2-9/16"
L9	3-5/16"
M1	29-1/16"
M2	7/16"
M3	2-5/8"
M4	43-3/8"

**Center of Gravity**

X	24-3/4"
Y	21-9/16"
Z	29-7/8"

Note - All dimensions have a tolerance of ± 0.25 in.

= Center of Gravity