

Date:

PO No.:

For: ☐ File ☐ Resubmit☐ Approval ☐ Other _____

Architect:

GC:

Engr:

Mech:

Rep:

(Company)

(Project Manager)

ARNU123NJA4Multi V™ Vertical /Horizontal Air Handling Unit
12,000 Btu/h Indoor Unit**Performance:**

Total Cooling Capacity (Btu/h)	12,000
Heating Capacity (Btu/h)	13,500
Power Input ¹ (W)	228

Cooling Nominal Test Conditions:

Indoor: 80°F DB / 67°F WB

Outdoor: 95°F DB / 75°F WB

Heating Nominal Test Conditions:

Indoor: 70°F DB / 59°F WB

Outdoor: 47°F DB / 43°F WB

Electrical:²

Power Supply (V/Hz/Ø)	208-230/60/1
Rated Amps (A)	1.12

Piping:

Refrigerant:

Liquid Line (in, OD)	1/4 braze
Vapor Line (in, OD)	1/2 braze

Condensate:

Condensate Line (in, ID)	1
Factory Installed Pump	No

Controls Features:

- Auto Operation
- Auto Changeover (Heat Recovery Only)
- Auto Restart
- Child Lock
- Dual Thermistor Control
- E.S.P. Control
- Group Control
- Hot Start
- Self Diagnostics
- Weekly Schedule
- Dual Setpoint Control
- Filter Life and Power Consumption Display
- External on/off control
- Timer (On/Off)
- Fan Speed Control

Optional Accessories:

- ☐ Wireless Remote Controller³ - PQWRHQ0FDB
- ☐ LG Programmable Controller - PREMTB10U
- ☐ LG Premium Controller - PREMTA000
- ☐ Simple Controller with Mode (Black) - PQRCVCL0Q
- ☐ Simple Controller with Mode (White) - PQRCVCL0QW
- ☐ Simple Controller without Mode (Black) - PQRCHCA0Q
- ☐ Simple Controller without Mode (White) - PQRCHCA0QW
- ☐ Simple Dry Contact (1 contact, 24 VAC external power) - PDRYCB100
- ☐ Dry Contact for Economizer - PQDSBC1
- ☐ Dry Contact for Third Party Thermostat - PDRYCB300
- ☐ Wall Mounted Temperature Sensor - PQRSTA0

Entering Mixed Air:

Cooling Max ⁴ (°F WB)	76
Heating Min (°F DB)	59

Unit Data:

Refrigerant Type	R410A
Refrigerant Control	EEV
Sound Pressure ⁵ dB(A) (H/M/L)	42/41/39
Net Unit Weight (lbs)	117
Shipping Weight (lbs)	140

Fan:

Type	Sirocco
Fan Quantity:	1
Motor/Drive:	Brushless Digitally Controlled/Direct
Motor Quantity:	1
High Mode Airflow Rate H/M/L (CFM):	530/480/380
High Mode External Static Pressure (ESP) ⁶ (in wg):	0.5
Standard Mode Airflow Rate H/M/L (CFM):	530/480/380
Standard Mode External Static Pressure (ESP) ⁶ (in wg):	0.3
Minimum ESP ⁷ :	0.1
Maximum ESP ⁷ :	1.0

Standard Features:

- Access Panel for Field Supplied Air Filter
- (16 x 20 x 1)

Notes:

- The Power Input is rated at high speed.
- Electrical data listed is without an electric heat kit accessory option. The addition of an electric heat kit accessory option will change the electrical data.
- Requires an LG wall controller because ducted units don't have an infrared receiver.
- See Engineering Manual for sensible and latent capacities.
- Sound pressure levels are tested in an anechoic chamber under ISO Standard 3745.
- At factory fan speed setting.
- Maximum static pressure may result in reduced airflow (CFM).
- All communication cable to be minimum 18 AWG, 2-conductor, stranded, shielded and must comply with applicable local and national code.
- Power wiring cable size must comply with the applicable local and national code.
- Adjust fan speed to correct for static pressure increases when using field supplied air filter or heat kit.
- Must follow installation instructions in the applicable LG installation manual.



ARNU123NJA4

Multi V™ Vertical /Horizontal Air Handling Unit

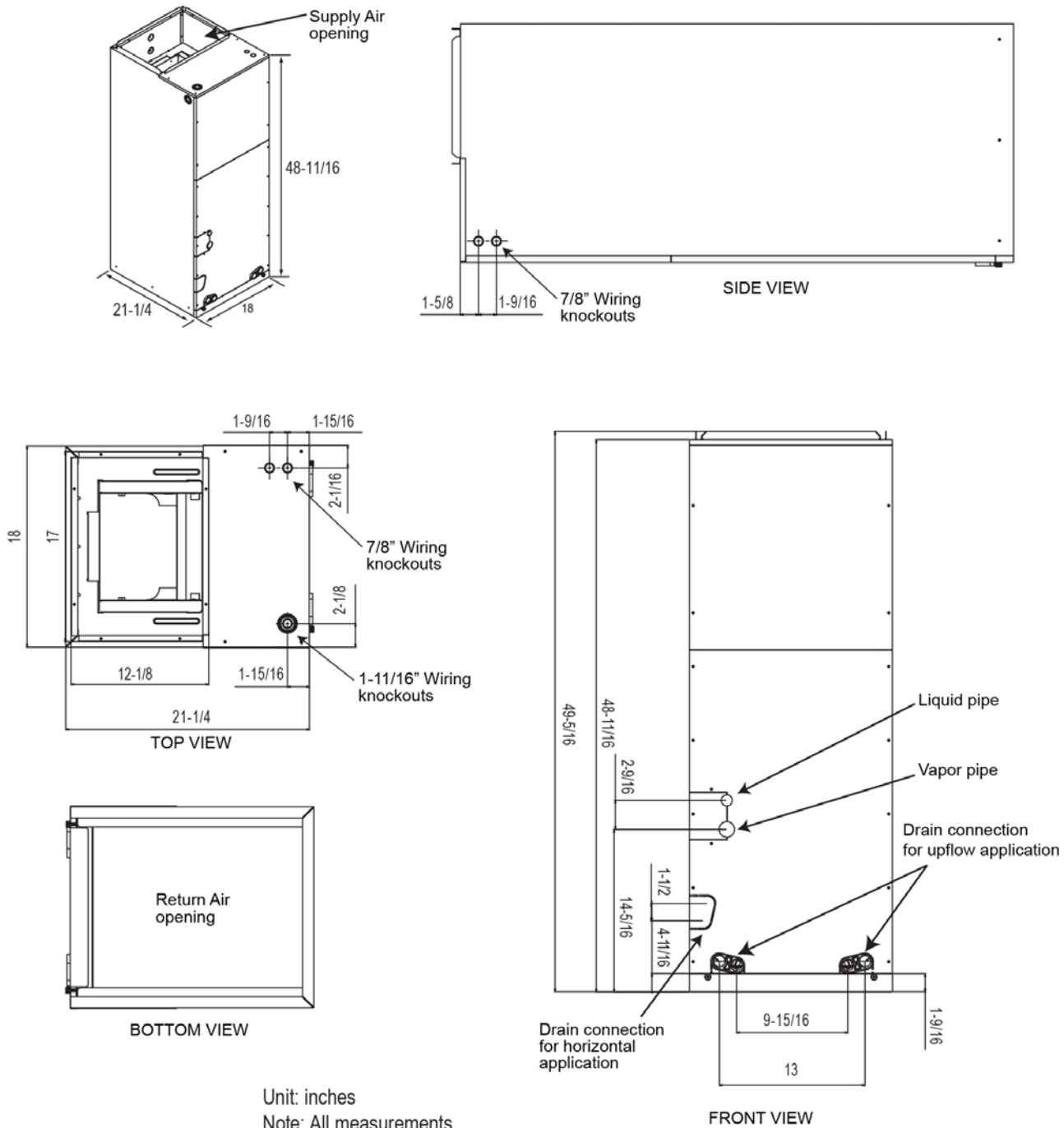
12,000 Btu/h Indoor Unit



Tag #:

Date:

PO No.:



Unit: inches

Note: All measurements have a tolerance of $\pm 1/4$ in.