

Job Name/Location:

Tag #:

Date:

For: File Resubmit
 Approval Other _____

PO No.:

Architect: _____ GC: _____

Engr: _____ Mech: _____

Rep: _____

(Company) _____ (Project Manager) _____



PTDCQ
 4-Way Ceiling Cassette Cover



Unit Data:

| | |
|-----------------------|----|
| Net Unit Weight (lbs) | 11 |
| Shipping Weight (lbs) | 18 |

Fitting Properties:

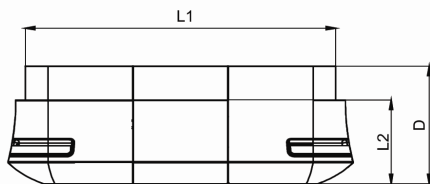
| | |
|----------|-------------------------|
| Color | White |
| Material | High Impact Polystyrene |

Compatible Indoor Units:

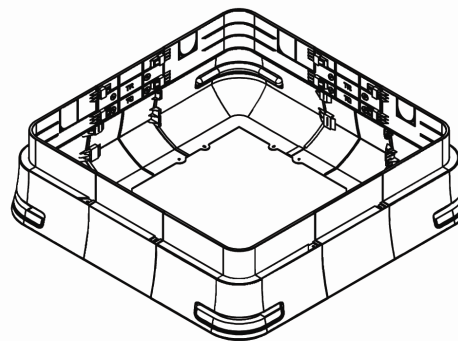
- ARNU053TRC2 ARNU183TQC2
- ARNU073TRC2
- ARNU093TRC2
- ARNU123TRC2
- ARNU153TQC2

Standard Features:

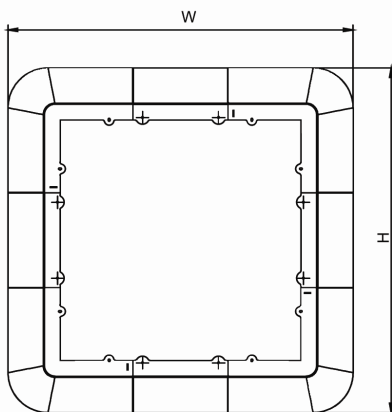
- Light weight
- Covers the side area of cassette in exposed applications



Side View



Isometric View



Top View

| | |
|----|----------|
| W | 35 3/4" |
| H | 35 3/4" |
| D | 12 1/8" |
| L1 | 32 3/16" |
| L2 | 8 5/8" |