

Job Name/Location:

Tag #:

Date:

For: File Resubmit

PO No.:

Approval Other _____

Architect:

GC:

Engr:

Mech:

Rep:

(Company)

(Project Manager)

ARWB216BAS4 (a) ARWB072BAS4
Multi V™ Water IV Heat Recovery (b) ARWB144BAS4
18.0 Ton Water Source Unit



Performance:

Cooling Mode:

| | |
|--------------------------|---------|
| Nominal Capacity (Btu/h) | 216,000 |
|--------------------------|---------|

Heating Mode:

| | |
|--------------------------|---------|
| Nominal Capacity (Btu/h) | 243,000 |
|--------------------------|---------|

Nominal capacities are outside the scope of AHRI Standard 1230 and based on the following conditions -

Cooling Nominal Test Conditions:

Heating Nominal Test Conditions:

Indoor: 80°F DB / 67°F WB

Indoor: 68°F DB

Water Inlet Temp: 86°F

Water Inlet Temp: 68°F

Electrical:

(a) ARWB072BAS4 (b) ARWB144BAS4

| | | |
|----------------------------|--------------|--------------|
| Power Supply (V/Hz/Ø) | 208-230/60/3 | 208-230/60/3 |
| MOP (A) | 60 | 60 |
| MCA (A) | 35.0 | 36.0 |
| Rated Amps (A) | 28.0 | 28.8 |
| Recommended Fuse Amps (A): | - | - |

Piping:

Refrigerant: (a) ARWB072BAS4 (b) ARWB144BAS4

| | | |
|---------------------------------------|------|-------|
| Refrigerant Charge (lbs) | 12.8 | 12.8 |
| Liquid Line ¹ (in, OD) | 3/8 | 1/2 |
| Vapor Line High ¹ (in, OD) | 3/4 | 3/4 |
| Vapor Line Low ¹ (in, OD) | 7/8 | 1-1/8 |

Water: (a) ARWB072BAS4 (b) ARWB144BAS4

| | | |
|-------------------------|-------|-------|
| Water Inlet/Outlet (in) | 1-1/2 | 1-1/2 |
|-------------------------|-------|-------|

Condensate: (a) ARWB072BAS4 (b) ARWB144BAS4

| | | |
|----------------------|-----|-----|
| Condensate Line (in) | 3/4 | 3/4 |
|----------------------|-----|-----|

Standard Features:

- Fault Detection and Diagnosis
- HiPOR (High Pressure Oil Return)
- Smart Oil Control

Required Accessories

- ARCNB21 (frame connector Y-branch)

Optional Accessories:

- Variable Water Flow Valve Control Kit - PWFCCK000

Water Operating Range¹:

| | |
|---|--------|
| CLG Mode Entering Water Range (°F) | 23-113 |
| HTG Mode Entering Water Range (°F) ² | 14-113 |

Synchronous Operating Range¹:

| | |
|---------------------------|--------|
| Entering Water Range (°F) | 23-113 |
|---------------------------|--------|

Unit Data:

| | |
|--|-----------------------|
| Refrigerant Type | R410A |
| Refrigerant Control | EEV |
| Max Number of Indoor Units ³ | 35 |
| Sound Pressure ⁴ (CLG/HTG) dB(A) | 57/57 |
| Net Unit Weight (a) + (b) (lbs) | 280 + 280 |
| Shipping Weight (a) + (b) (lbs) | 302 + 302 |
| Communication Cable ⁵ (No. x AWG) | 2 x 18 |
| Heat Exchanger Type | Stainless Steel Plate |
| Heat Rejected to Equipment Room (Btu/h) | 4,816 |

Compressor:

| | |
|----------|-----------------|
| Type | Hermetic Scroll |
| Drive | Inverter |
| Quantity | 2 |
| Oil/Type | PVE/FVC68D |

Condenser Water:

| | |
|---------------------------------|-------------|
| Flow Rate (a) + (b) (GPM) | 20.3 + 35.5 |
| Pressure Drop (a) + (b) (ft wg) | 3.7 + 9.5 |

Notes:

1. When entering water temperature is lower than 59°F, variable water flow control kit PWFCCK000 is required.
2. When entering water temperature is lower than 23°F, water solution must be minimum 45% antifreeze.
3. The combination ratio must be between 50-130%.
4. Sound pressure levels are tested in an anechoic chamber under ISO Standard 3745.
5. All communication cable to be minimum 18 AWG, 2-conductor, stranded, shielded and must comply with applicable local and national code.
6. For AHRI ratings, refer to the AHRI website <http://www.ahridirectory.org>.
7. Nominal data is rated 0 ft above sea level, with 25 ft of refrigerant line per indoor unit and a 0 ft level difference between outdoor and indoor units. All capacities are net with a combination ratio between 95 – 105%.
8. Power wiring cable size must comply with the applicable local and national code.
9. The voltage tolerance is ± 10%.



Job Name/Location:

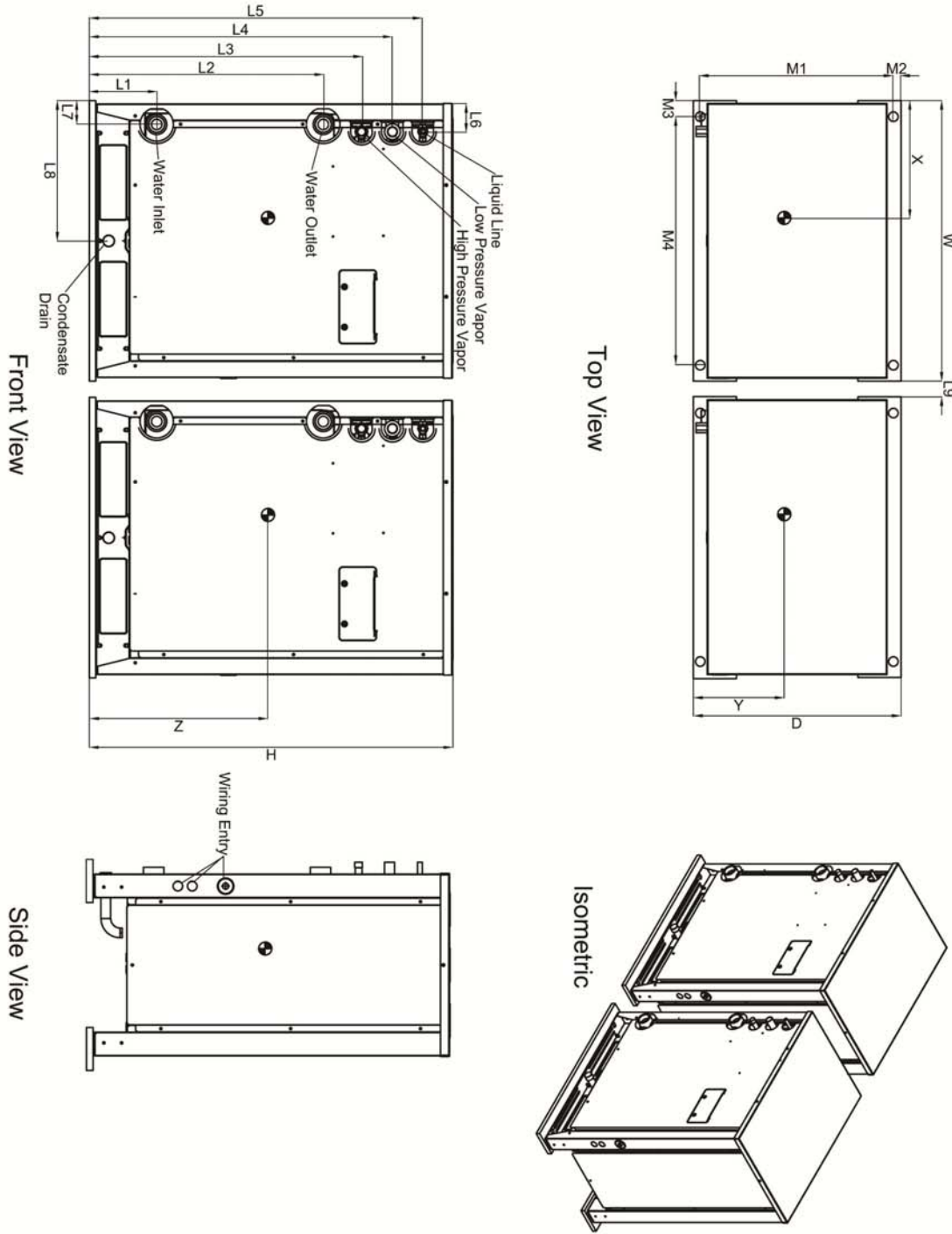
ARWB216BAS4 (a) ARWB072BAS4
 Multi V™ Water IV Heat Recovery (b) ARWB144BAS4
 18.0 Ton Water Source Unit



Tag #: _____

Date: _____

PO No.: _____



| | |
|----|-----------|
| X | 13-1/2" |
| Y | 9-13/16" |
| Z | 16-1/2" |
| W | 29-3/4" |
| D | 19-3/4" |
| H | 39-1/4" |
| L1 | 6-5/8" |
| L2 | 25" |
| L3 | 29-1/4" |
| L4 | 32-1/2" |
| L5 | 35-15/16" |
| L6 | 3-1/8" |
| L7 | 2-1/4" |
| L8 | 14-3/4" |
| L9 | 4" |
| M1 | 18-1/4" |
| M2 | 3/4" |
| M3 | 2-7/16" |
| M4 | 24-13/16" |