

Date: _____

For: File Resubmit
 Approval Other _____

PO No.: _____

Architect: _____

GC: _____

Engr: _____

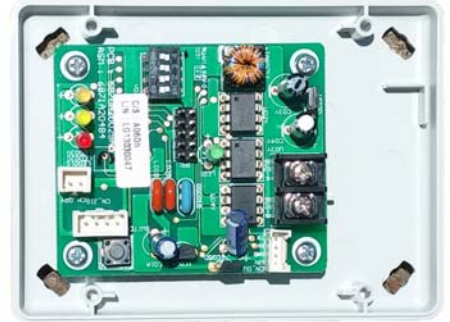
Mech: _____

Rep: _____

(Company)

(Project Manager)

PSNFP14A0
PI-485 for Energy Recovery Ventilator (ERV)



Electrical:

Power Supply 12 VDC provided from IDU

Surrounding Conditions:

Operating Temperature -4 to 122 °F
 Storage Temperature -4 - 176 °F
 Humidity 0 to 90% RH

Unit Data:

Dimensions 5-3/16" W x 3-6/16" H x 1-3/8" D

Standard Features:

- Adapt Energy Recovery Ventilators (ERV) units to LG System Air Conditioner Central Control Protocol (LGAP) for integration with LG central controllers including AC Ez, ACP Standard, ACP Premium, AC Smart Premium and BACnet® and LonWorks® Gateways

Notes:

- 1.One PI-485 required per unit.
- 2.Must follow installation instructions in the applicable LG installation manual.

Connectivity:

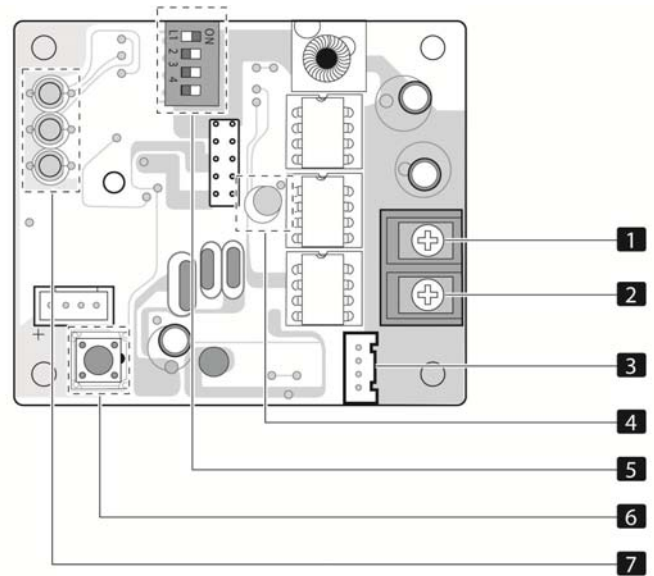
LG Communications 1 Channel/RS-485 V-Net
 32" Multi V Wiring Harness (included)

Communications Cabling Specifications (V-Net):

Type 2-conductor, stranded, shielded copper cable/PVC or vinyl jacket
 Size AWG 18-2
 Maximum Length 3,280 ft (end-to-end)

AWG - American Wire Gage

Description:



- 1 BUS_A: RS-485 (+) Terminal
- 2 BUS_B: RS-485 (-) Terminal
- 3 CN_OUT: Indoor Unit Connector
- 4 LED1: RS-485 Communication Status LED
- 5 Dip Switch Settings for US ERV: 1 and 2 Off (Down) 1 and 2 On (Up)
- 6 Reset Switch: PI485(C) Reset
- 7 LED01G,02G,03G: Communication Status LED