

Date:

For: File Resubmit
 Approval Other _____

PO No.:

Architect:

GC:

Engr:

Mech:

Rep:

(Company)

(Project Manager)

ARUN053GF2
 Multi V Space II
 4.4 Ton Outdoor Unit



Performance:

Cooling Mode:

Nominal Capacity (Btu/h)	53,000
Power Input ¹ (kW)	5.10

Heating Mode:

Nominal Capacity (Btu/h)	59,000
Power Input ¹ (kW)	5.40

Nominal Capacity is outside the scope of AHRI Standard 210/240 and based on the following conditions:

Indoor: 80°F DB / 67°F WB Indoor: 47°F DB / 43°F WB
 Outdoor: 95°F DB Outdoor: 70°F DB

Electrical:

Power Supply (V/Hz/Ø)	208-230/60/1
MOP (A)	50
MCA (A)	31.2
Rated Amps (A)	25.7
Compressor A (A)	21.7
Fan (A)	4.0

Piping:

Refrigerant Charge (lbs)	7.7
Liquid Line (in, OD)	3/8 Braze
Vapor Line (in, OD)	3/4 Braze

Operating Range:

Cooling (°F DB)	23-118
Heating (°F WB)	-4-60

Unit Data:

Refrigerant Type	R410A
Refrigerant Control	EEV
Max Number of Indoor Units ²	9
Sound Pressure Front Side ³ dB(A)	53
Sound Pressure Rear (Fan) Side ³ dB(A)	68
Net Unit Weight (lbs)	320
Shipping Weight (lbs)	346
Communication Cable ⁴ (No x AWG)	2 x 18
Heat Exchanger Coating	GoldFin™

Compressor:

Type	Inverter
Compressor Qty	1
Oil / Type	PVE/FVC68D

Fan:

Type	Propeller
Quantity	1
Motor/Drive	Brushless Digitally Controlled/Direct
Air Flow Rate (CFM)	3,532
External Static Pressure (ESP) (in wg)	0.12 - 0.20

Notes:

- For AHRI ratings, refer to the AHRI website <http://www.ahridirectory.org>.
- The combination ratio must be between 50 – 130%.
- Sound Pressure levels are tested in an anechoic chamber under ISO Standard 3745.
- All communication cable to be minimum 18 AWG, 2-conductor, stranded, shielded and must comply with applicable local and national code.
- Nominal data is rated 0 ft above sea level, with 25 ft of refrigerant line per indoor unit and a 0 ft level difference between outdoor and indoor units. All capacities are net with a combination ratio between 95-105%.
- The voltage tolerance is ± 10%.
- Power wiring cable size must comply with the applicable local and national code.



ARUN053GF2

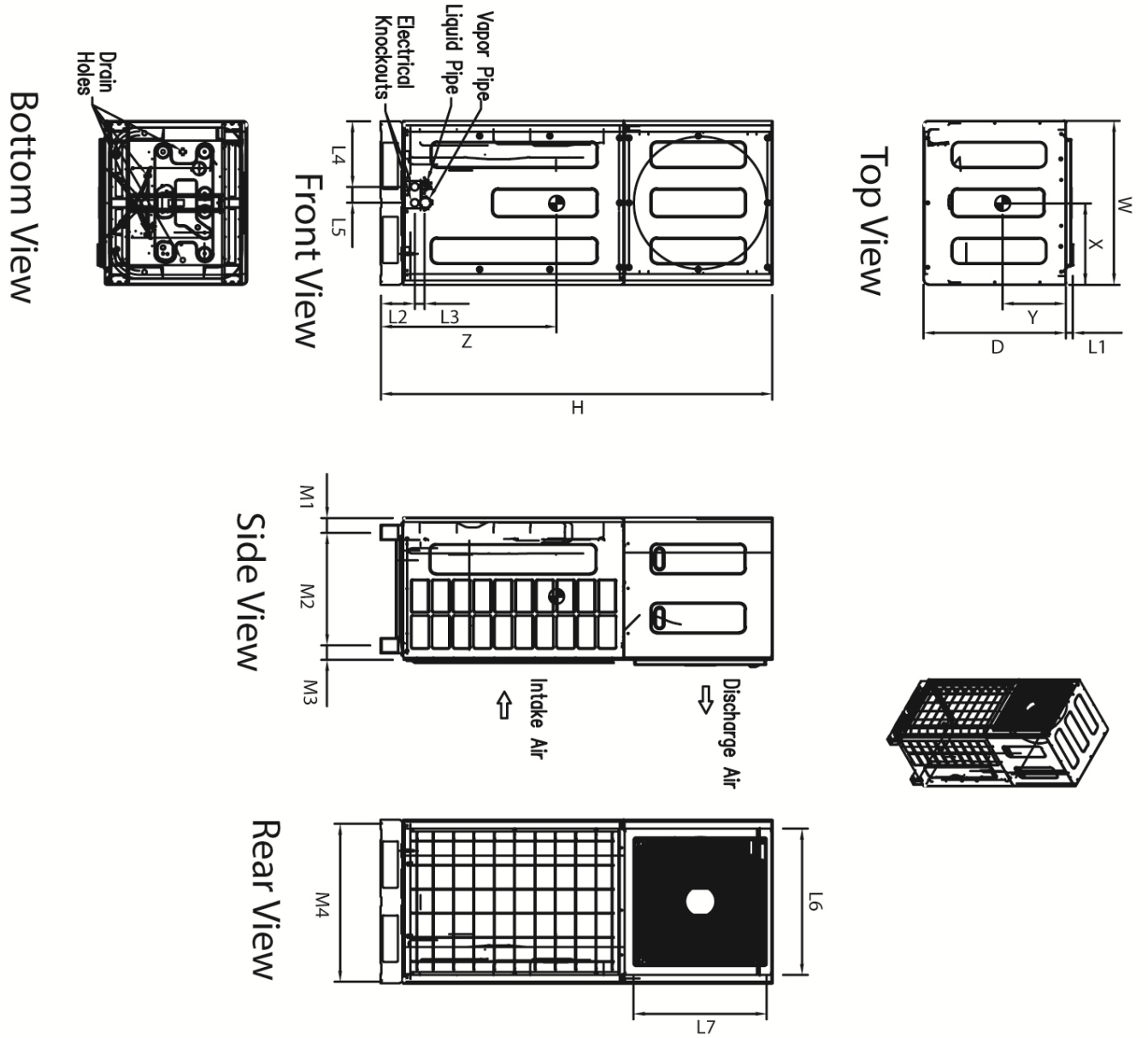
Multi V Space II
4.4 Ton Outdoor Unit



Tag #:

Date:

PO No.:



Dimensions

W	29-1/2"
D	25-1/2"
H	70-1/2"
L1	1-1/4"
L2	6"
L3	1-13/16"
L4	11-13/16"
L5	2-13/16"
L6	26-3/8"
L7	23-15/16"
M1	2-5/8"
M2	20-5/16"
M3	2-9/16"
M4	28-1/2"

Center of Gravity

X	14-5/8"
Y	11-3/8"
Z	31-1/2"