

Job Name/Location:

Tag #:

Date: _____ For: File Resubmit
 PO No.: _____ Approval Other _____
 Architect: _____ GC: _____
 Engr: _____ Mech: _____
 Rep: _____
 (Company) _____ (Project Manager) _____



ARUB192BTE4 (a) ARUB072BTE4
 Multi V™ IV Heat Recovery (b) ARUB121BTE4
 16.0 Ton Outdoor Unit



Performance:

Cooling Mode:

| | |
|-------------------------------|---------|
| Nominal Capacity (Btu/h) | 192,000 |
| Power Input ¹ (kW) | 12.20 |

Heating Mode:

| | |
|-------------------------------|---------|
| Nominal Capacity (Btu/h) | 216,000 |
| Power Input ¹ (kW) | 14.23 |

Nominal Capacity is outside the scope of AHRI Standard 1230 and based on the following conditions:

Indoor: 80°F DB / 67°F WB Indoor: 70°F DB
 Outdoor: 95°F DB Outdoor: 47°F DB / 43°F WB

Electrical:

(a) ARUB072BTE4 (b) ARUB121BTE4

| | | |
|-----------------------|--------------|--------------|
| Power Supply (V/Hz/Ø) | 208-230/60/3 | 208-230/60/3 |
| MOP (A) | 40 | 60 |
| MCA (A) | 25.3 | 40.3 |
| Rated Amps (A) | 21.0 | 33.4 |
| Compressor A (A) | 17.0 | 27.4 |
| Compressor B (A) | - | - |
| Fan (A) | 4.0 | 6.0 |

Piping:

(a) ARUB072BTE4 (b) ARUB121BTE4

| | | |
|---------------------------------------|------|-------|
| Refrigerant Charge (lbs) | 16.9 | 23.6 |
| Liquid Line ² (in, OD) | 3/8 | 1/2 |
| Vapor Line High ² (in, OD) | 5/8 | 3/4 |
| Vapor Line Low ² (in, OD) | 3/4 | 1-1/8 |

Standard Features:

- HiPOR (high pressure oil return)
- Smart Oil Control
- Split Frame Defrost
- Night Quiet Operation
- Fault Detection and Diagnosis

Required Accessories:

- ARCNB21 (frame connector Y-branch)

Optional Accessories:

- Air Guide - PRAGX2S0 (1), Air Guide - PRAGX3S0 (2)
 - Hail Guard Kit - ZHGDKA01A (1), Hail Guard Kit - ZHGDKA04A (1)
 - Low Ambient Baffle Kit - ZLABKA01A (1), Low Ambient Baffle Kit - ZLABKA03A (1)
- **(-9.9°F achieved only when all IDU's are operating in cooling mode. Does not impact synchronous operating range.)**

Operating Range:

| | |
|-----------------------|----------|
| Cooling (°F DB)** | 14-122 |
| Heating (°F WB) | -13 - 61 |
| Synchronous | |
| Cooling Based (°F DB) | 14 – 81 |
| Heating Based (°F WB) | 14 – 61 |

Unit Data:

| | |
|---|-----------|
| Refrigerant Type | R410A |
| Refrigerant Control | EEV |
| Max Number of Indoor Units ³ | 32 |
| Sound Pressure ⁴ dB(A) | 61.8 |
| Net Unit Weight (a) + (b) (lbs) | 430 + 540 |
| Shipping Weight (a) + (b) (lbs) | 452 + 573 |
| Communication Cable ⁵ (No x AWG) | 2 x 18 |
| Heat Exchanger Coating | GoldFin™ |

Compressor:

| | |
|----------|---------------|
| Type | HSS DC Scroll |
| Quantity | 2 |
| Oil/Type | PVE/FVC68D |

Fan:

| | |
|---------------------|---------------------------------------|
| Type | Propeller |
| Quantity | 3 |
| Motor/Drive | Brushless Digitally Controlled/Direct |
| Air Flow Rate (CFM) | 17,600 |

Notes:

- 1.For AHRI ratings, refer to the AHRI website <http://www.ahridirectory.org>.
- 2.For main pipe segment size, refer to the LATS Multi V tree diagram.
- 3.The combination ratio must be between 50-130%.
- 4.Sound Pressure levels are tested in an anechoic chamber under ISO Standard 3745 for the combination of outdoor units.
- 5.All communication cable to be minimum 18 AWG, 2-conductor, stranded, shielded and must comply with applicable local and national code. Cables terminate at each frame.
- 6.Nominal data is rated 0 ft above sea level, with 25 ft of refrigerant line per indoor unit and a 0 ft level difference between outdoor and indoor units. All capacities are net with a combination ratio between 95-105%.
- 7.Power wiring cable size must comply with the applicable local and national code. Cables terminate at each frame.
- 8.The voltage tolerance is ± 10%.



Job Name/Location:

ARUB192BTE4
Multi V™ IV Heat Recovery
16.0 Ton Outdoor Unit

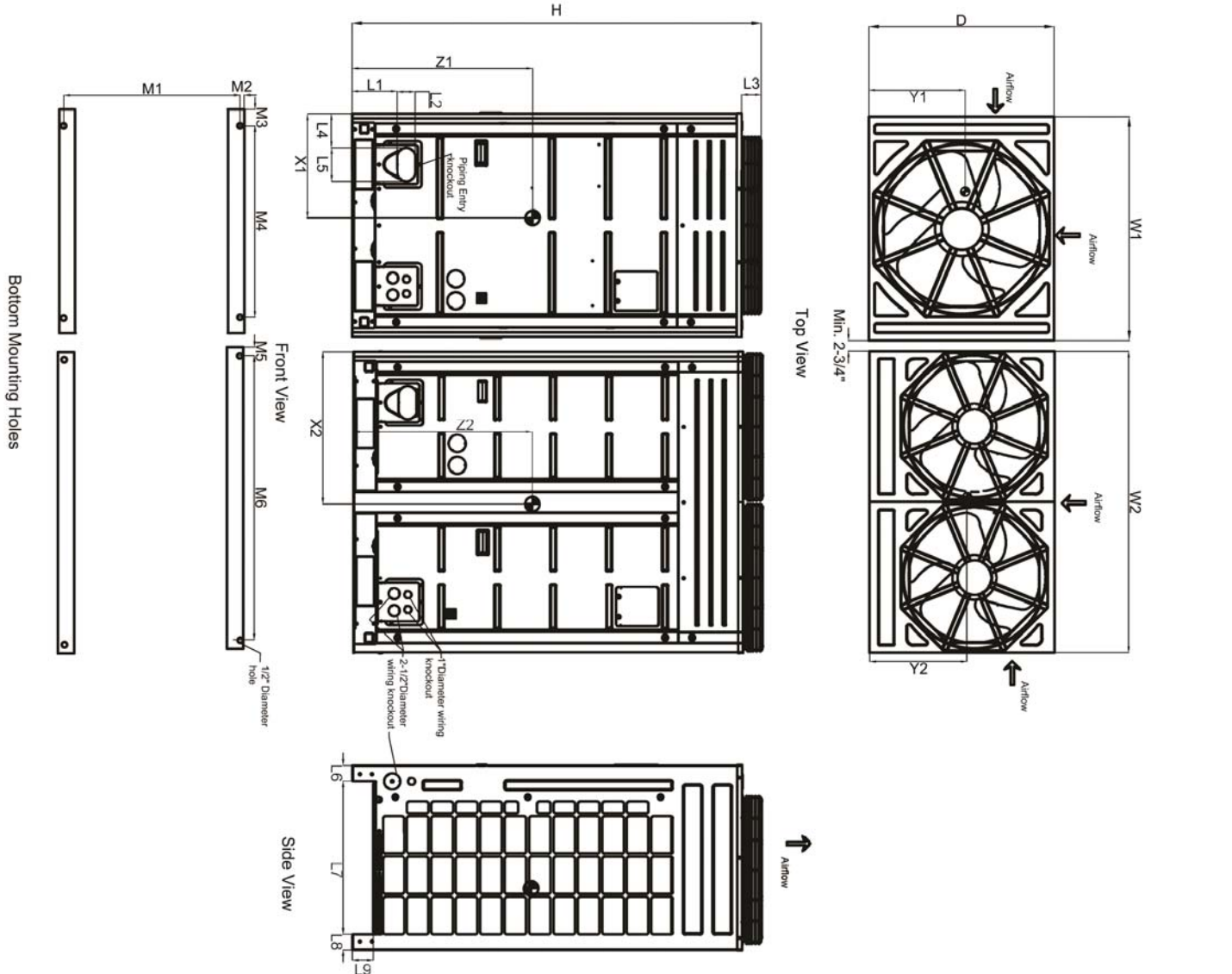
(a) ARUB072BTE4
(b) ARUB121BTE4



Tag #:

Date:

PO No.:



Note - All dimensions have a tolerance of ± 0.25 in.
 = Center of Gravity

| | |
|--------------------------|-----------|
| W1 | 36-1/4" |
| W2 | 48-13/16" |
| D | 29-15/16" |
| H | 66-1/8" |
| L1 | 7-1/4" |
| L2 | 2-15/16" |
| L3 | 3-1/8" |
| L4 | 5-1/2" |
| L5 | 5-3/8" |
| L6 | 2-9/16" |
| L7 | 24-3/16" |
| L8 | 2-9/16" |
| L9 | 3-5/16" |
| M1 | 29-1/16" |
| M2 | 7/16" |
| M3 | 2-5/8" |
| M4 | 31-3/16" |
| M5 | 2-5/8" |
| M6 | 43-3/8" |
| Center of Gravity | |
| X1 | 17-5/8" |
| X2 | 24-3/4" |
| Y1 | 13-1/2" |
| Y2 | 21-9/16" |
| Z1 | 29-5/8" |
| Z2 | 29-7/8" |