

Job Name/Location:

Tag #:

Date:

For:  File  Resubmit

PO No.:

Approval  Other

Architect:

GC:

Engr:

Mech:

Rep:

(Company)

(Project Manager)

**ARUN312DTE4** (a) ARUN072DTE4  
**Multi V™ IV Heat Pump** (b) ARUN096DTE4  
**26.0 Ton Outdoor Unit** (c) ARUN144DTE4



**Performance:**

**Cooling Mode:**

Nominal Capacity (Btu/h)	312,000
Power Input <sup>1</sup> (kW)	19.77

**Heating Mode:**

Nominal Capacity (Btu/h)	351,000
Power Input <sup>1</sup> (kW)	22.63

Nominal Capacity is outside the scope of AHRI Standard 1230 and based on the following conditions:

Indoor: 80°F DB / 67°F WB      Indoor: 70°F DB  
 Outdoor: 95°F DB                  Outdoor: 47°F DB / 43°F WB

**Electrical:** (a) ARUN072DTE4 (b) ARUN096DTE4 (c) ARUN144DTE4

Power Supply (V/Hz/Ø)	460/60/3	460/60/3	460/60/3
MOP (A)	25	35	40
MCA (A)	16.7	23.2	31.6
Rated Amps (A)	13.8	19.1	28.4
Compressor A (A)	11.7	16.5	12.9
Compressor B (A)	-	-	12.9
Fan (A)	2.1	2.6	2.6

**Piping:** (a) ARUN072DTE4 (b) ARUN096DTE4 (c) ARUN144DTE4

Refrigerant Charge (lbs)	16.9	23.6	23.6
Liquid Line <sup>2</sup> (in, OD)	3/8	3/8	1/2
Vapor Line <sup>2</sup> (in, OD)	3/4	7/8	1-1/8

**Standard Features:**

- HiPORA (high pressure oil return)
- Smart Oil Control
- Split Frame Defrost
- Night Quiet Operation
- Fault Detection and Diagnosis

**Required Accessories:**

- ARCNN21 (frame connector Y-branch)
- ARCNN31 (frame connector Y-branch)

**Optional Accessories:**

- Air Guide - PRAGX2S0 (1), Air Guide - PRAGX3S0 (4 required)
  - Low Ambient Baffle Kit - ZLABKA01A (1), Low Ambient Baffle Kit - ZLABKA03A (2), Control Kit - PRVC2 (1 per system)
- \*\*(-9.9°F achieved only when all IDU's are operating in cooling mode.)**

**Operating Range:**

Cooling (°F DB)	14-122
Heating (°F WB)	-13 - 61

**Unit Data:**

Refrigerant Type	R410A
Refrigerant Control	EEV
Max Number of Indoor Units <sup>3</sup>	52
Sound Pressure <sup>4</sup> dB(A)	63.8
Net Unit Weight (a) + (b) + (c) (lbs)	430 + 540 + 628
Shipping Weight (a) + (b) + (c) (lbs)	452 + 573 + 661
Communication Cable <sup>5</sup> (No x AWG)	2 x 18
Heat Exchanger Coating	GoldFin™

**Compressor:**

Compressor Type	HSS DC Scroll
Compressor Quantity	4
Oil/Type	PVE/FVC68D

**Fan:**

Type	Propeller
Quantity (a) + (b) + (c)	5
Motor/Drive	Brushless Digitally Controlled/Direct
Air Flow Rate (a) + (b) + (c) (CFM)	27,800

**Notes:**

- 1.For AHRI ratings, refer to the AHRI website <http://www.ahridirectory.org>.
- 2.For main pipe segment size, refer to the LATS Multi V tree diagram.
- 3.The combination ratio must be between 50-130%.
- 4.Sound Pressure levels are tested in an anechoic chamber under ISO Standard 3745 for the combination of outdoor units.
- 5.All communication cable to be minimum 18 AWG, 2-conductor, stranded, shielded and must comply with applicable local and national code. Cables terminate at each frame.
- 6.Nominal data is rated 0 ft above sea level, with 25 ft of refrigerant line per indoor unit and a 0 ft level difference between outdoor and indoor units. All capacities are net with a combination ratio between 95-105%.
- 7.Power wiring cable size must comply with the applicable local and national code. Cables terminate at each frame.
- 8.The voltage tolerance is 414-528V.



**ARUN312DTE4**  
 Multi V™ IV Heat Pump  
 26.0 Ton Outdoor Unit

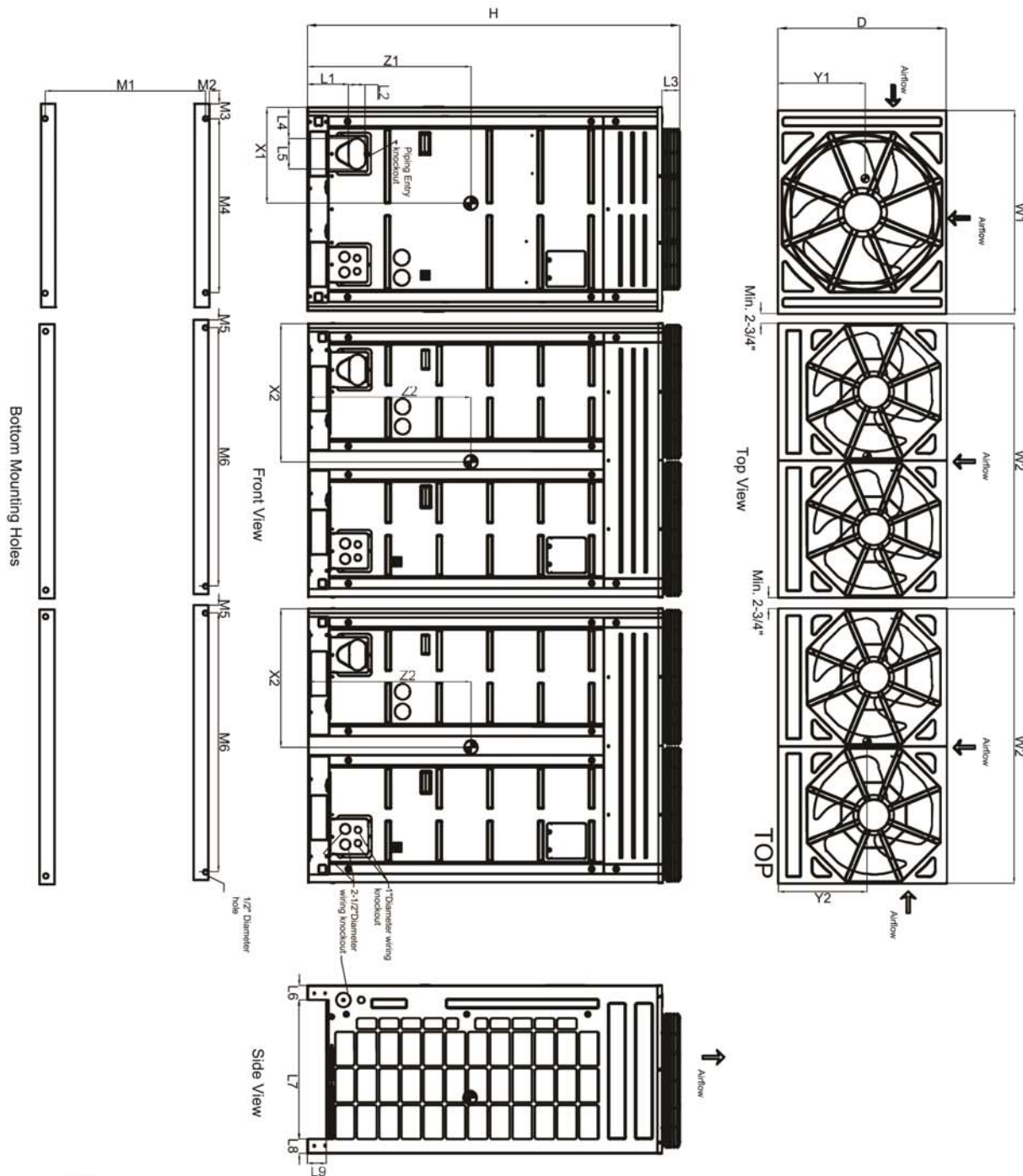
- (a) ARUN072DTE4
- (b) ARUN096DTE4
- (c) ARUN144DTE4



Tag #:

Date:

PO No.:



W1	36-1/4"
W2	48-13/16"
D	29-15/16"
H	66-1/8"
L1	7-1/4"
L2	2-15/16"
L3	3-1/8"
L4	5-1/2"
L5	5-3/8"
L6	2-9/16"
L7	24-3/16"
L8	2-9/16"
L9	3-5/16"
M1	29-1/16"
M2	7/16"
M3	2-5/8"
M4	31-3/16"
M5	2-5/8"
M6	43-3/8"

**Center of Gravity**

X1	17-5/8"
X2	24-3/4"
Y1	13-1/2"
Y2	21-9/16"
Z1	29-5/8"
Z2	29-7/8"

Note - All dimensions have a tolerance of ± 0.25 in.  
 = Center of Gravity