

Date: _____ For: File Resubmit
 PO No.: _____ Approval Other _____
 Architect: _____ GC: _____
 Engr: _____ Mech: _____
 Rep: _____
 (Company) _____ (Project Manager) _____



ARWN048GA2
 Multi V™ Water Mini
 4.0 Ton Water Source Unit



Performance:

Cooling Mode:

Capacity (Btu/h)	47,800
Power Input (kW)	2.7

Heating Mode:

Capacity (Btu/h)	54,600
Power Input (kW)	2.9

Capacities are based on the following conditions:

Cooling Nominal Test Conditions:
 Indoor: 80°F DB / 66°F WB
 Water Inlet Temp: 86°F

Heating Nominal Test Conditions:
 Indoor: 68°F DB / 59°F FWB
 Water Inlet Temp: 68°F

Electrical:

Power Supply (V/Hz/Ø)	208-230/60/1
MOP (A)	45
MCA (A)	26.5
Rated Amps (A)	21.2

Piping:

Refrigerant:

Refrigerant Charge (lbs)	2.2
Liquid Line (in, OD)	3/8 braze
Vapor Line (in, OD)	3/4 braze

Water:

Water Inlet/Outlet (in)	1-1/4 FPT
-------------------------	-----------

FPT - Female Pipe Thread

Optional Accessories:

- Variable Water Valve Control Kit - PRVC1

Water Operating Range:

CLG Mode Entering Water Range (°F)	50-113
HTG Mode Entering Water Range (°F)	23-113

CLG - Cooling HTG - Heating

Unit Data:

Refrigerant Type	R410A
Refrigerant Control	EEV
Max Number of Indoor Units ²	8
Sound Pressure ³ dB(A) (CLG/HTG)	51/53
Net Unit Weight (lbs)	168
Shipping Weight (lbs)	181
Communication Cable ⁴ (No. x AWG)	2 x 18
Heat Exchanger Type	Stainless Steel Plate
Heat Rejected to Equipment Room (Btu/h)	512

AWG - American Wire Gage

Compressor:

Inverter Rotary Quantity	1
Oil/Type	PVE/FVC68D

Condenser Water:

Flow Rate (GPM)	13.2
Pressure Drop (ft wg)	6.9

Notes:

- The combination ratio must be between 50-130%.
- Sound pressure levels are tested in an anechoic chamber under ISO Standard 3745.
- All communication cable to be minimum 18 AWG, 2-conductor, stranded, shielded and must comply with applicable local and national code.
- Nominal data is rated 0 ft above sea level, with 25 ft of refrigerant line per indoor unit and a 0 ft level difference between outdoor and indoor units. All capacities are net with a combination ratio between 95 - 105%.
- The voltage tolerance is ± 10%.
- Power wiring cable size must comply with the applicable local and national code.



Job Name/Location:

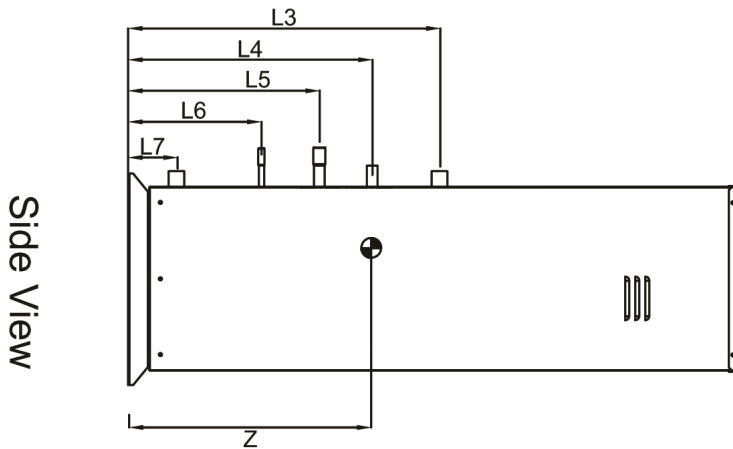
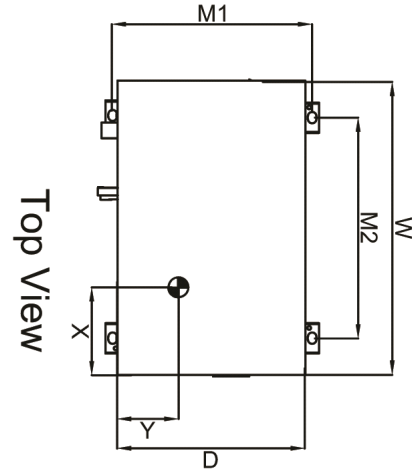
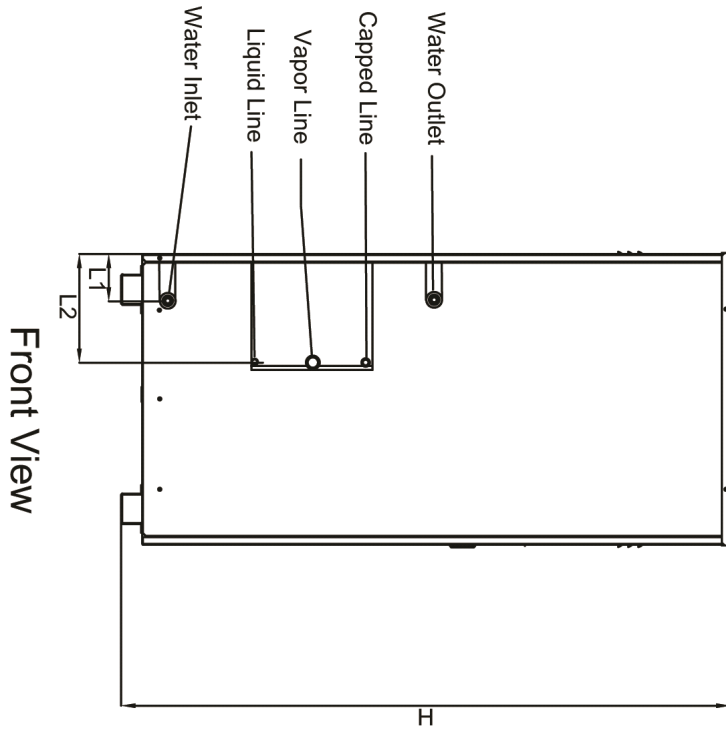
ARWN048GA2
Multi V™ Water Mini
4.0 Ton Water Source Unit



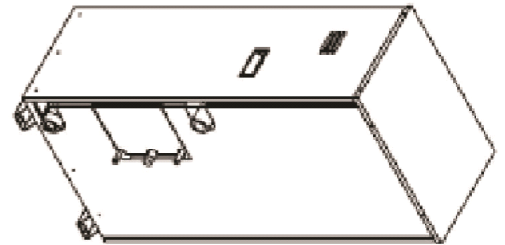
Tag #:

Date:

PO No.:



Isometric



X	8-5/16"
Y	4-7/16
Z	15-7/8

W	20-5/8"
D	13-1/8"
H	42-1/2"
L1	3-5/16"
L2	7-5/8"
L3	21-13/16"
L4	17-1/16"
L5	13-5/8"
L6	9-5/16"
L7	3-7/16"
L8	23-11-16"
M1	13-15/16"
M2	15-1/4