

Job Name/Location:

Tag #:

Date:

For: ☐ File ☐ Resubmit

PO No.:

☐ Approval ☐ Other _____

Architect:

GC:

Engr:

Mech:

Rep:

(Company)

(Project Manager)

**ARNU243BGA2**

Multi V™ Ducted (High Static)

24,200 Btu/h Indoor Unit

**Performance:**

Total Cooling Capacity (Btu/h)	24,200
Heating Capacity (Btu/h)	27,300
Power Input ¹ (W)	450

Cooling Nominal Test Conditions:

Indoor: 80°F DB/67°F WB

Outdoor: 95°F DB

Heating Nominal Test Conditions:

Indoor: 70°F DB

Outdoor: 47°F DB/43°F WB

Electrical:

Power Supply (V/Hz/Ø)	208-230/60/1
Rated Amps (A)	2.3

Piping:

Refrigerant:

Liquid Line (in, OD)	3/8 Flare
Vapor Line (in, OD)	5/8 Flare

Condensate:

Condensate Pump Drain ² (in, OD)	1 Plain
Gravity Drain Plugged (in, OD)	1 MPT

Controls Features:

- Auto changeover (Heat Recovery only)
- Auto operation
- Auto restart
- Child lock
- Dual thermistor control
- Group control
- Hot start
- Self diagnostics
- Sleep mode
- Timer (on/off)
- Weekly schedule
- Soft dry (dehumidification)
- Fan speed control

Optional Accessories:

- ☐ Wireless Handheld Remote Controller³ - PQWRHDF0
- ☐ LG Programmable Thermostat - PREMTB10U
- ☐ Simple Controller with Mode (Black) - PQRCVCL0Q
- ☐ Simple Controller with Mode (White) - PQRCVCL0QW
- ☐ Simple Controller without Mode (Black) - PQRCHCA0Q
- ☐ Simple Controller without Mode (White) - PQRCHCA0QW
- ☐ Dry Contact Unit (1 contact, 24 VAC external power) - PQDSB1
- ☐ Dry Contact with Economizer Interface- PQDSBC1
- ☐ Dry Contact for Third Party Thermostat - PQDSBNGCM1
- ☐ Wall Mounted Temperature Sensor - PQRSTA0
- ☐ High Efficiency Filter Box for BG HSD Chassis - ZFBXBG01A
- ☐ Dynamic V8 2VL Low Profile Air Cleaner - ZPLMV201A
- ☐ Dynamic V8 4VL Air Cleaner - ZPLMV402A
- ☐ Dynamic V8 VL Replacement Filter Pads (4-Pack) - ZFLT1301A
- ☐ Dynamic V8 VL Replacement Filter Pads (24 Pack) - ZFLT1302A
- ☐ Return Air Grille - Louvered (one per plenum) - ZGRLRA01A
- ☐ Return Air Grille - Egg Crate (one per plenum) - ZGRLRA02A
- ☐ 2VL Low Profile Return Air Plenum - ZPLMV201A
- ☐ 4VL Return Air Plenum - ZPLMV402A

Entering Mixed Air:

Cooling Max ⁴ (°F WB)	76
Heating Min (°F DB)	59

Unit Data:

Refrigerant Type	R410A
Refrigerant Control	EEV
Sound Pressure ⁵ dB(A) (H/M/L)	42/39/37
Filter Type	Washable
MERV	N/A
Filter Quantity	1
Filter Dimensions ⁶	8-1/2" x 42-1/4" x 1/4"
Net Unit Weight (lbs)	84
Shipping Weight (lbs)	95

Fan:

Type	Sirocco
Fan Quantity	2
Motor/Drive	Brushless Digitally Controlled/Direct
Motor Quantity	2
Airflow Rate H/M/L (CFM)	671/576/547
External Static Pressure (ESP) ⁷ (in wg)	0.39
Minimum ESP/Fan Setting Value ⁸	0.23/110
Maximum ESP/Setting Value ⁸	0.62/111

Notes:

- 1.The Power Input is rated at high speed.
- 2.Maximum lift is 27 in from bottom of unit. Check valve not included (field supplied).
- 3.Requires an LG Programmable Thermostat, Simple Controller with Mode or a Simple Controller without Mode.
- 4.See Engineering Manual for sensible and latent capacities.
- 5.Sound Pressure levels are tested in an anechoic chamber under ISO Standard 3745.
- 6.Actual filter sizes may vary.
- 7.At factory fan speed setting.
8. Air flow rate (CFM) at high speed.
- 9.All communication cable to be minimum 18 AWG, 2-conductor, stranded, shielded and must comply with applicable local and national code.
- 10.Power wiring cable size must comply with the applicable local and national code.
- 11.This unit comes with a dry nitrogen charge.
- 12.This data is rated 0 ft above sea level, with 25 ft of refrigerant line per indoor unit and a 0 ft level difference between outdoor and indoor units. All capacities are net with a combination ratio between 95 – 105%.
- 13.Must follow installation instructions in the applicable LG installation manual.



Job Name/Location:

ARNU243BGA2

Multi V™ Ducted (High Static)

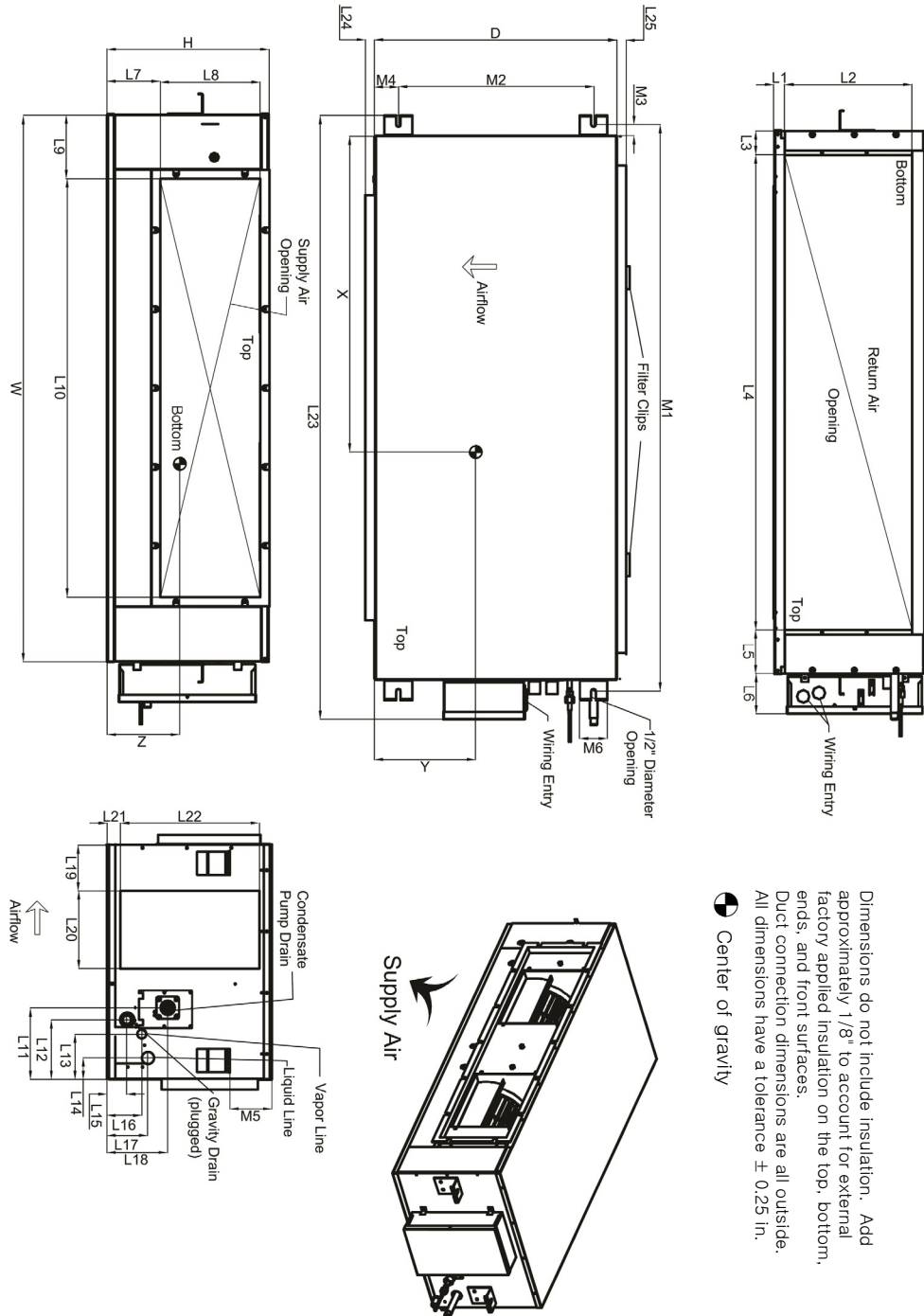
24,200 Btu/h Indoor Unit



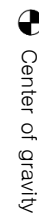
Tag #:

Date:

PO No.:



Dimensions do not include insulation. Add approximately 1/8" to account for external factory applied insulation on the top, bottom, ends, and front surfaces. Duct connection dimensions are all outside. All dimensions have a tolerance ± 0.25 in.



Center of gravity

* No flange/filter, retainer clips only

W	46-1/2"
D	17-3/4"
H	11-5/8"
L1	1"
L2	7-7/8"
L3	1"
L4	41-1/8"
L5	4-5/8"
L6	4-3/8"
L7	3-5/8"
L8	7-5/16"
L9	6-7/8"
L10	32-11/16"
L11	6-3/8"
L12	6-1/2"
L13	3-7/8"
L14	1-3/4"
L15	1"
L16	3-3/8"
L17	3-3/4"
L18	6-7/8"
L19	3-1/8"
L20	6-1/2"
L21	1-1/8"
L22	10-3/8"
L23	53-1/4"
L24	1"
L25*	no flange
M1	48-3/4"
M2	14"
M3	1"
M4	1-9/16"
M5	4"
M6	2"

X	21-1/4"
Y	8-5/8"
Z	5-3/8"

Center of Gravity
ARNU243BGA2