

Date: _____

PO No.: _____

Architect: _____

Engr: _____

Rep: _____
(Company) _____ (Project Manager)

For: File Resubmit
 Approval Other _____

GC: _____

Mech: _____



ARUB072DT3
Multi V™ III Heat Recovery
6.0 Ton Outdoor Unit



Performance:

Cooling Mode:

Nominal Capacity (Btu/h)	72,000
Power Input ¹ (kW)	4.94

Heating Mode:

Nominal Capacity (Btu/h)	81,000
Power Input ¹ (kW)	5.18

Nominal Capacity is outside the scope of AHRI Standard 1230 and based on the following conditions:

Indoor: 80°F DB / 67°F WB Indoor: 70°F DB
Outdoor: 95°F DB Outdoor: 47°F DB / 43°F WB

Electrical:

Power Supply (V/Hz/Ø)	460/60/3
MOP (A)	25
MCA (A)	14.9
Rated Amps (A)	12.3
Compressor A (A)	10.2
Compressor B (A)	-
Fan (A)	2.1
Max Starting Current (A)	-

Piping:

Refrigerant Charge (lbs)	12.1
Liquid Line (in, OD)	3/8
Vapor Line High (in, OD)	5/8
Vapor Line Low (in, OD)	3/4

Standard Features:

- Night Quiet Operation
- Fault Detection and Diagnosis

Optional Accessories:

- Low Ambient Kit - ZLABKA01A
- Hail Guard Kit - ZHGDKA01A
- Air Guide - PRAGX2S0

Operating Range:

Cooling (°F DB)	23 - 122
Heating (°F WB)	-4 - 60
Synchronous	
Cooling Based (°F DB)	14 - 81
Heating Based (°F WB)	14 - 60

Unit Data:

Refrigerant Type	R410A
Refrigerant Control	EEV
Max Number of Indoor Units ²	13
Sound Pressure ³ dB(A)	57
Net Unit Weight (lbs)	418
Shipping Weight (lbs)	441
Communication Cable ⁴ (No. x AWG)	2 x 18
Heat Exchanger Coating	GoldFin™

Compressor:

Inverter Scroll Quantity	1
Constant Scroll Quantity	-
Oil/Type	PVE/FVC68D

Fan:

Type	Propeller
Fan Quantity	1
Motor/Drive	Brushless Digitally Controlled/Direct
Fan Air Flow Rate (CFM)	6,300

Notes:

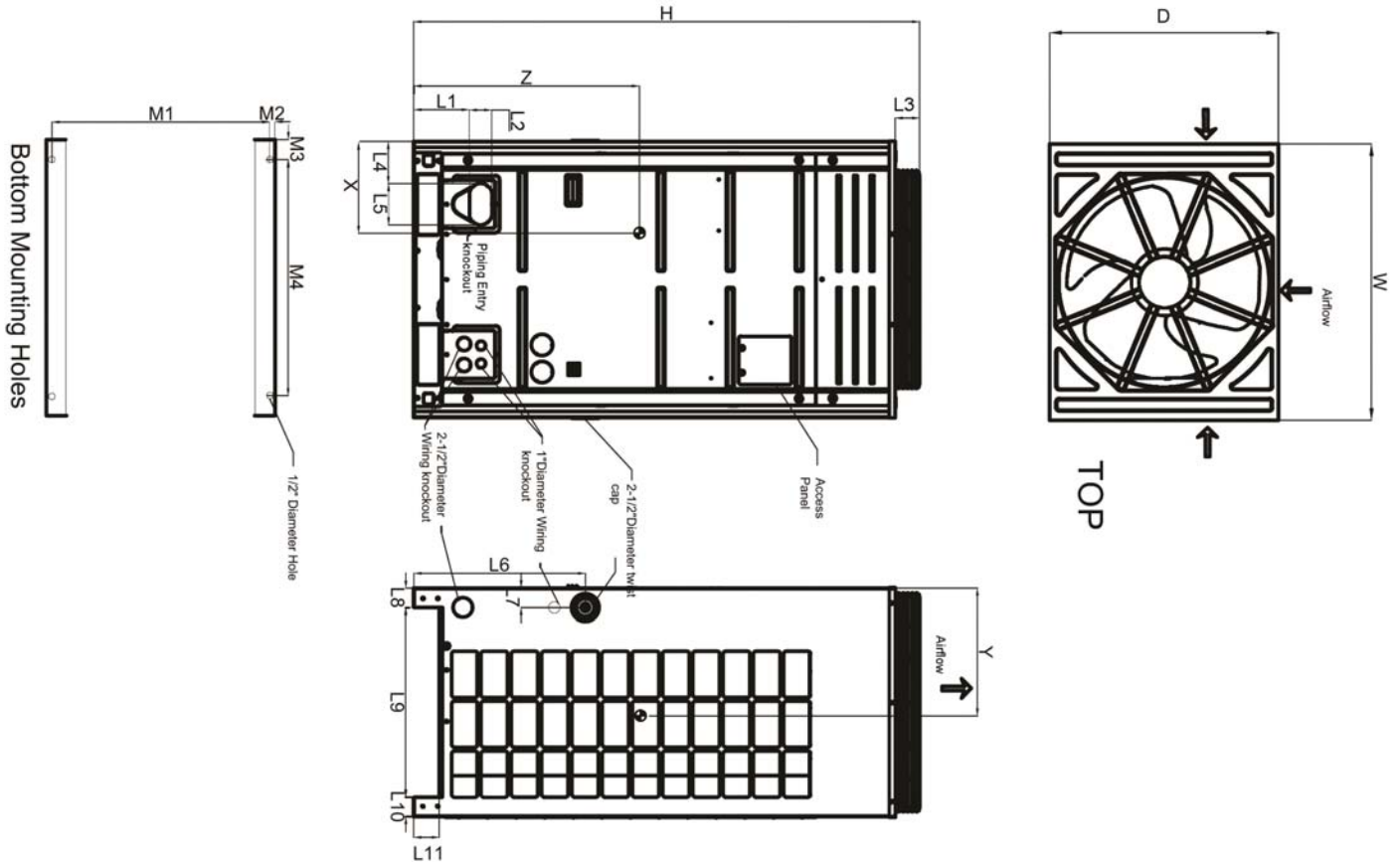
1. For AHRI ratings, refer to the AHRI website <http://www.ahridirectory.org>.
2. The combination ratio must be between 50 – 130%.
3. Sound Pressure levels are tested in an anechoic chamber under ISO Standard 1996.
4. All communication cable to be minimum 18 AWG, 2-conductor, stranded, shielded and must comply with applicable local and national code.
5. Nominal data is rated 0 ft above sea level, with 25 ft of refrigerant line per indoor unit and a 0 ft level difference between outdoor and indoor units. All capacities are net with a combination ratio between 95-105%.
6. The voltage tolerance is ± 10%.
7. Power wiring cable size must comply with the applicable local and national code.



ARUB072DT3
 Multi V™ III Heat Recovery
 6.0 Ton Outdoor Unit



Tag #: _____
 Date: _____
 PO No.: _____



W	36-1/4"
D	29-15/16"
H	66-1/8"
L1	7-1/4"
L2	2-15/16"
L3	3-1/8"
L4	5-1/2"
L5	5-3/8"
L6	22-7/16"
L7	2-9/16"
L8	2-9/16"
L9	24-3/16"
L10	2-9/16"
L11	3-5/16"
M1	29-1/16"
M2	7/16"
M3	2-5/8"
M4	31-3/16"

Center of Gravity

X	11-1/2"
Y	17-13/16"
Z	29-5/16"

Note - All dimensions have a tolerance of ± 0.25 in.

