

Job Name/Location:

Tag #:

Date: _____

PO No.: _____

Architect: _____

Engr: _____

Rep: _____

(Company) _____ (Project Manager) _____

For: File Resubmit
 Approval Other _____

GC: _____

Mech: _____



ARUB216BT3 (a) ARUB144BT3
 Multi V™ III Heat Recovery (b) ARUB072BT3
 18.0 Ton Outdoor Unit



Performance:

Cooling Mode:

Nominal Capacity (Btu/h)	216,000
Power Input ¹ (kW)	15.18

Heating Mode:

Nominal Capacity (Btu/h)	243,000
Power Input ¹ (kW)	15.62

Nominal Capacity is outside the scope of AHRI Standard 1230 and based on the following conditions:

Indoor: 80°F DB / 67°F WB Indoor: 70°F DB
 Outdoor: 95°F DB Outdoor: 47°F DB / 43°F WB

Electrical: (a) ARUB144BT3 (b) ARUB072BT3

Power Supply (V/Hz/Ø)	208-230/60/3	208-230/60/3
MOP (A)	70	35
MCA (A)	49.9	23.3
Rated Amps (A)	44.8	19.4
Compressor A (A)	18.3	15.4
Compressor B (A)	20.5	-
Fan (A)	6.0	4.0
Combined Max Starting Current (A)	160.4	

Piping: (a) ARUB144BT3 (b) ARUB072BT3

Refrigerant Charge (lbs)	20.7	12.1
Liquid Line ² (in, OD)	1/2	3/8
Vapor Line High ² (in, OD)	7/8	5/8
Vapor Line Low ² (in, OD)	1-1/8	3/4

Standard Features:

- Night Quiet Operation
- Fault Detection and Diagnosis

Required Accessories:

- Frame Connector Y-branch - ARCNN21

Optional Accessories:

- Low Ambient Kit (6 ton outdoor units) - ZLABKA01A
- Low Ambient Kit (8-12 ton outdoor units) - ZLABKA02A
- Hail Guard Kit (6 ton outdoor units) -ZHGDKA01A
- Hail Guard Kit (8-12 ton outdoor units) -ZHGDKA02A
- Air Guide (6 ton outdoor units) - PRAGX2S0
- Air Guide (8-12 ton outdoor units) - PRAGX3S0 (2 required)

Operating Range:

Cooling (°F DB)	23 - 122
Heating (°F WB)	-4 - 60
Synchronous	
Cooling Based (°F DB)	14 - 81
Heating Based (°F WB)	14 - 60

Unit Data:

Refrigerant Type	R410A
Refrigerant Control	EEV
Max Number of Indoor Units ³	35
Sound Pressure ⁴ dB(A)	61
Net Unit Weight (a) + (b) (lbs)	617 + 418
Shipping Weight (a) + (b) (lbs)	650 + 441
Communication Cable ⁵ (No x AWG)	2 x 18
Heat Exchanger Coating	GoldFin™

Compressor:

Inverter Scroll Quantity	2
Constant Scroll Quantity	1
Oil/Type	PVE/FVC68D

Fan:

Type	Propeller
Fan Quantity	2 + 1
Motor/Drive	Brushless Digitally Controlled/Direct
Fan Air Flow Rate (CFM)	15,100

Notes:

- 1.For AHRI ratings, refer to the AHRI website <http://www.ahridirectory.org/>.
- 2.For main pipe segment size, refer to the LATS Multi V tree diagram.
- 3.The combination ratio must be between 50-130%.
- 4.Sound Pressure levels are tested in an anechoic chamber under ISO Standard 1996 for the combination of outdoor units.
- 5.All communication cable to be minimum 18 AWG, 2-conductor, stranded, shielded and must comply with applicable local and national code. Cables terminate at each frame.
- 6.Nominal data is rated 0 ft above sea level, with 25 ft of refrigerant line per indoor unit and a 0 ft level difference between outdoor and indoor units. All capacities are net with a combination ratio between 95-105%.
- 7.The voltage tolerance is ± 10%.
- 8.Power wiring cable size must comply with the applicable local and national code. Cables terminate at each frame.

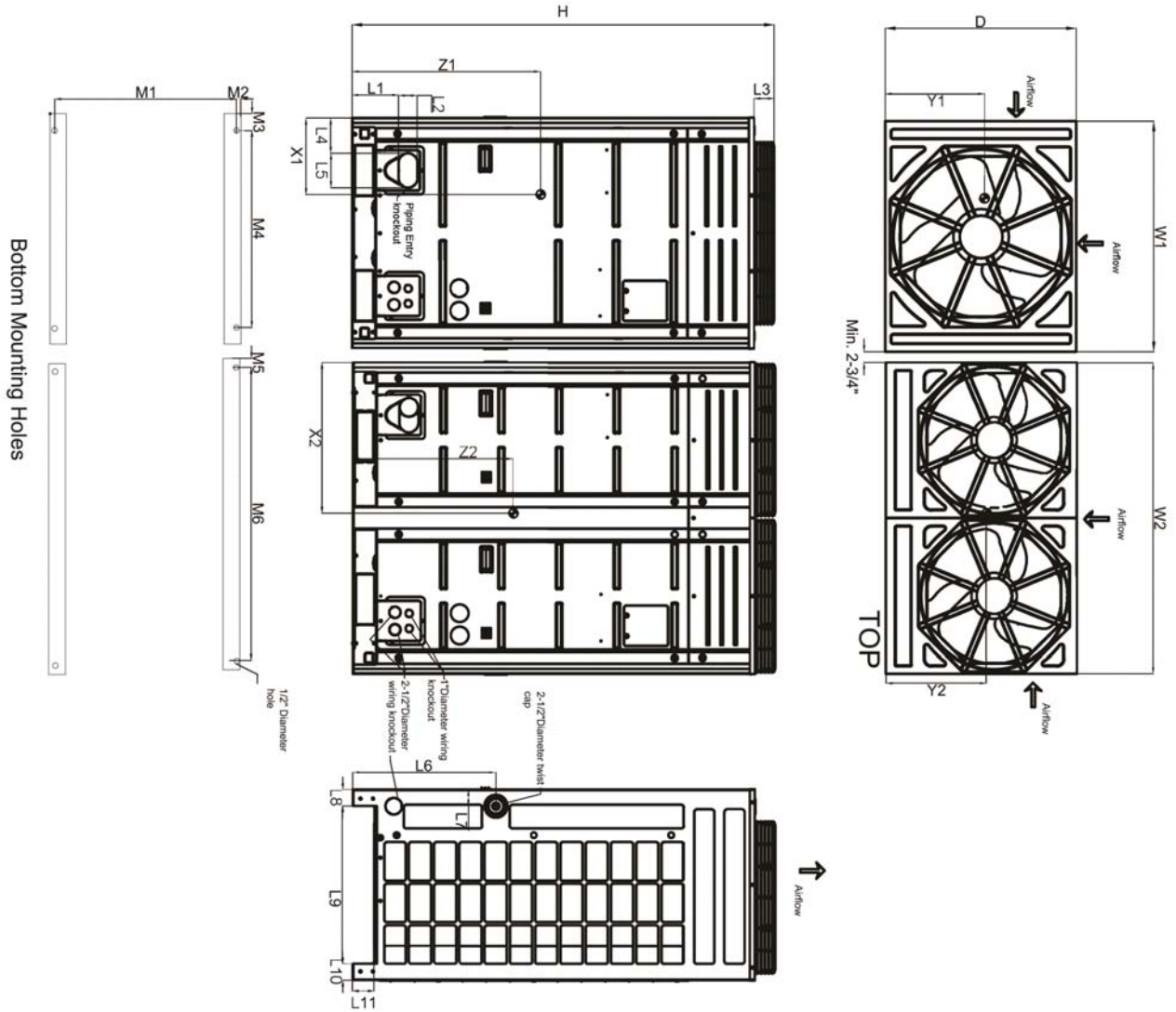


ARUB216BT3
 Multi V™ III Heat Recovery
 18.0 Ton Outdoor Unit

(a) ARUB144BT3
 (b) ARUB072BT3



Tag #: _____
 Date: _____
 PO No.: _____



Bottom Mounting Holes

Center of Gravity

X1	11-1/2"
X2	23-1/8"
Y1	17-13/16"
Y2	14-5/8"
Z1	29-5/16"
Z2	25-13/16"

W1	36-1/4"
W2	48-13/16"
D	29-15/16"
H	66-1/8"
L1	7-1/4"
L2	2-15/16"
L3	3-1/8"
L4	5-1/2"
L5	5-3/8"
L6	22-7/16"
L7	2-9/16"
L8	2-9/16"
L9	24-3/16"
L10	2-9/16"
L11	3-5/16"
M1	29-1/16"
M2	7/16"
M3	2-5/8"
M4	31-3/16"
M5	2-5/8"
M6	43-3/8"

Note - All dimensions have a tolerance of ± 0.25 in.

= Center of Gravity