

Job Name/Location:

Tag #:

Date:

For: File Resubmit

PO No.:

Approval Other

Architect:

GC:

Engr:

Mech:

Rep:

(Company)

(Project Manager)



PRHR040A

Multi V™ Sync II Heat Recovery Unit

Performance:

Max Port Capacity Btu/h (each port)	48,100
Max Unit Capacity Btu/h (sum of ports)	160,350
Power Input (W)	40

Electrical:

Power Supply (V/Hz/∅)	208-230V/60/1
MOP (A)	15
MCA (A)	0.2

Piping:

Refrigerant:

Port Liquid Line (in, OD)	3/8
Port Vapor Line (in, OD)	5/8
System Liquid Line (in, OD)	1/2
System Vapor Line High (in, OD)	7/8
System Vapor Line Low (in, OD)	1-1/8

Standard Features:

- Allows connected indoor units to be in cooling or heating mode simultaneously
 - Casing is internally insulated
 - External insulation not needed
- Condensate drain not needed
- Series or parallel connection with additional heat recovery units
 - Flexible placement for service access or pipe routing

Unit Data:

Refrigerant Type	R410A
Number of Indoor Unit Ports	4
Net Unit Weight (lbs)	53
Shipping Weight (lbs)	62
Communication Cable ¹ (No# x AWG)	2 x 18

Notes:

1. All communication cable to be minimum 18 AWG, 2-conductor, stranded, shielded and must comply with applicable local and national code.
2. Kit components must be kept dry and free of debris before installation.
3. Must follow installation instructions in the applicable LG installation manual.
4. Power wiring cable size must comply with the applicable local and national code.
5. This unit comes with a dry nitrogen charge.

PRHR040A

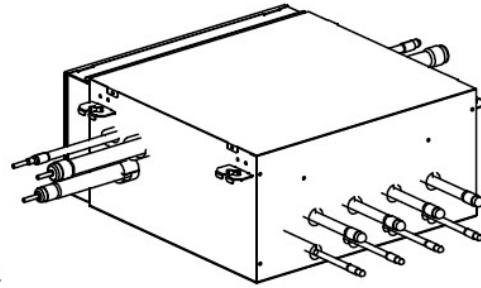
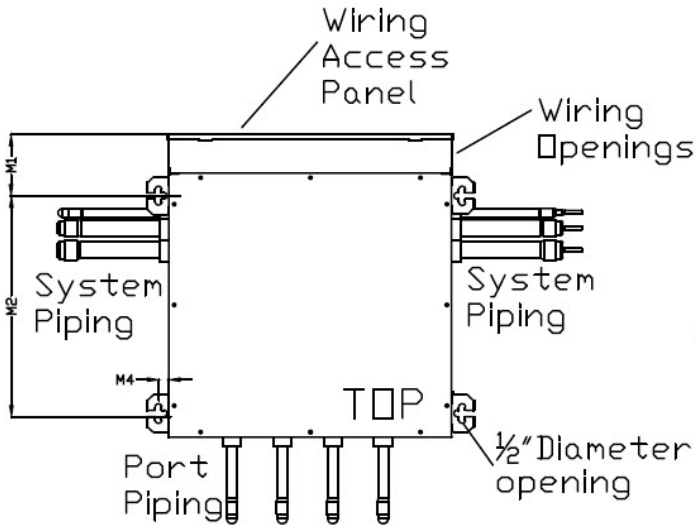
Multi V™ Sync II Heat Recovery Unit



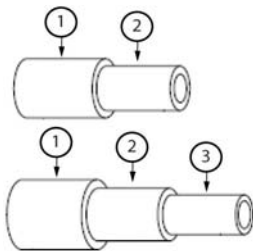
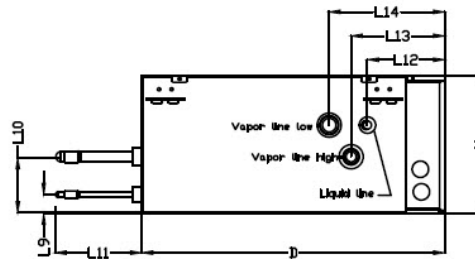
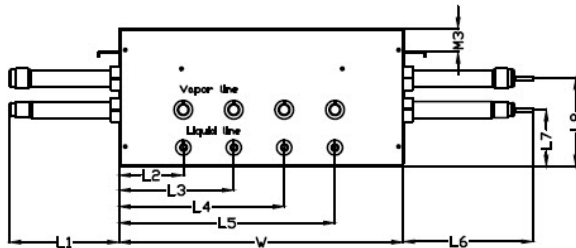
Tag #:

Date:

PO No.:



W	17-3/4"
H	8-5/8"
D	19"
L1	6-3/4"
L2	4-1/4"
L3	7-1/2"
L4	10-1/2"
L5	13-3/4"
L6	8"
L7	3-1/2"
L8	5-1/2"
L9	1-1/4"
L10	3-1/2"
L11	5-1/2"
L12	4-3/4"
L13	5-3/4"
L14	7-1/4"
M1	3-3/4"
M2	13-5/8"
M3	1-1/2"
M4	5/8"



Reducer Dimensions (in)		Port Identifier		
		1	2	3
Indoor Unit	Liquid Line	3/8 OD	1/4 OD	-
	Vapor Line	5/8 OD	1/2 OD	-
HR Unit	Liquid Line	1/2 OD	3/8 OD	-
	Vapor Line Low	3/4 OD	5/8 OD	-
	Vapor Line High	1-1/8 OD	7/8 OD	3/4 OD