

Job Name/Location:

Tag #:

Date:

For: File Resubmit

PO No.:

Approval Other _____

Architect:

GC:

Engr:

Mech:

Rep:

(Company)

(Project Manager)

Indoor Y-Branch Kits

Multi V™ 2 Pipe



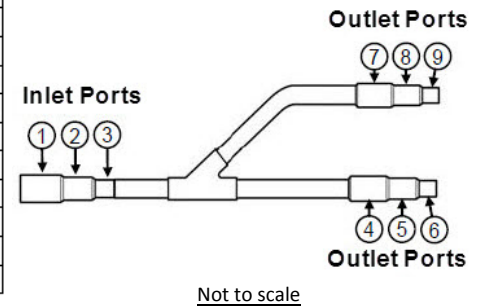
Fitting Properties:

Material	Copper
Design Pressure	551 PSIG

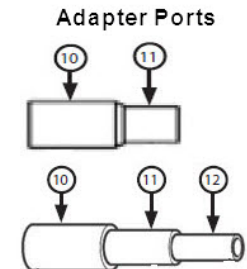
Insulation¹ Properties:

Material	Polyolefin Foam
UL94 Flame Classification	HF-1

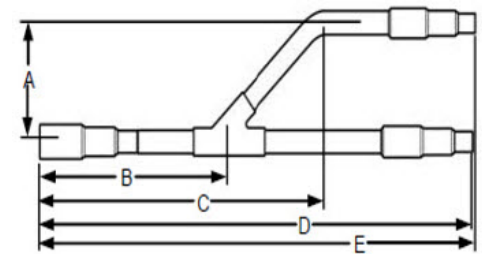
Y-Branch Connection Diameters (in, ID)										
Model	Y-Branch Type	Port Identifier								
		1	2	3	4	5	6	7	8	9
ARBLN01621	Liquid	-	1/4	3/8	3/8	1/4	-	3/8	1/4	-
	Vapor	-	5/8	1/2	1/2	5/8	-	1/2	5/8	-
ARBLN03321	Liquid	-	1/2	3/8	3/8	1/2	1/4	3/8	1/2	1/4
	Vapor	1	7/8	3/4	5/8	3/4	1/2	5/8	3/4	1/2
ARBLN07121	Liquid	1/2	3/4	5/8	5/8	3/4	1/2	5/8	3/4	1/2
	Vapor	-	1-1/4	1-1/8	7/8	3/4	5/8	3/4	5/8	1/2
ARBLN14521	Liquid	5/8	7/8	3/4	7/8	3/4	5/8	3/4	5/8	1/2
	Vapor	1-3/8	1-1/2	1-5/8	1-1/2	1-3/8	1-1/8	1-3/8	1-1/8	7/8



Reducer Diameters (in)						
Model	Qty/Kit	Reducer Type	10	11	12	Length
ARBLN01621	2	Liquid	1/2 ID	3/8 OD	-	2-3/4
		Vapor	3/4 ID	5/8 OD	-	2-3/4
ARBLN03321	3	Liquid	-	-	-	-
		Vapor	1-1/8 ID	1 OD	-	3-5/32
			7/8 ID	3/4 OD	-	2-3/4
ARBLN07121	5	Liquid	1 ID	7/8 ID	3/4 OD	4-11/32
			1/2 OD	3/8 ID	1/4 ID	4-11/32
		Vapor	1/2 OD	3/8 ID	-	2-3/4
1-3/8 ID	1-1/4 OD		-	3-17/32		
ARBLN14521	8	Liquid	1-1/4 ID	1-1/8 ID	7/8 OD	4-23/32
			1-1/8 ID	7/8 ID	3/4 OD	4-23/32
			7/8 ID	3/4 OD	-	3-5/32
ARBLN14521	8	Vapor	5/8 OD	1/2 ID	3/8 ID	4-11/32
			1/2 OD	3/8 ID	1/4 ID	4-11/32
			7/8 OD	3/4 ID	5/8 ID	4-23/32
		1-5/8 ID	1-1/2 OD	-	3-17/32	
		1-5/8 ID	1-1/2 ID	1-3/8 OD	5-1/8	
		5/8 OD	1/2 ID	-	2-3/4	
1-1/8 OD	7/8 ID	3/4 ID	4-23/32			



Y-Branch Dimensions ² (in)						
Model	Y-Branch Type	A	B	C	D	E
ARBLN01621	Liquid	2-29/32	6-9/16	8	11-1/16	11-1/2
	Vapor	2-29/32	4-1/2	8	11-1/16	11-1/2
ARBLN03321	Liquid	2-29/32	4-1/2	8	12-5/8	13-1/16
	Vapor	3-9/32	6-29/32	10-29/32	15-11/32	16-1/4
ARBLN07121	Liquid	3-9/32	6-1/8	10	14-5/8	15-1/2
	Vapor	3-25/32	5-1/2	10	14-13/16	15-29/32
ARBLN14521	Liquid	3-25/32	7-3/32	11-7/8	16-3/8	17-15/32
	Vapor	4-15/16	7-29/32	13-7/8	18-17/32	20-11/32



Notes:

- Each Y-Branch kit comes with insulation for the following piping components – liquid and vapor.
- LG branch fittings must be used. Field supplied branch fittings are not permitted.
- Kit components must be kept dry and free of debris before installation.
- Must follow installation instructions in the applicable LG installation manual.