

Job Name/Location:

Tag #:

Date:

For: File Resubmit

PO No.:

Approval Other _____

Architect:

GC:

Engr:

Mech:

Rep:

(Company)

(Project Manager)



ARNU243CFU2
Multi V™ Floor Standing (without case)
24,200 Btu/h Indoor Unit

Performance:

Total Cooling Capacity ¹ (Btu/h)	24,200
Heating Capacity (Btu/h)	27,300
Power Input ² (W)	80

Cooling Nominal Test Conditions:
Indoor: 80°F DB/67°F WB
Outdoor: 95°F DB

Heating Nominal Test Conditions:
Indoor: 70°F DB
Outdoor: 47°F DB/43°F WB

Electrical:

Power Supply (V/Hz/∅)	208-230/60/1
Rated Amps (A)	0.43

Piping:

Refrigerant:

Liquid Line (in, OD)	3/8 Flare
Vapor Line (in, OD)	5/8 Flare

Condensate:

Gravity Condensate Drain (in, OD)	1/2
Factory Installed Pump	No

Controls Features:

- Auto changeover (Heat Recovery only)
- Auto operation
- Auto restart
- Child lock
- Dual thermistor control
- Group control
- E.S.P. control
- Hot start
- Self diagnostics
- Sleep mode
- Timer (on/off)
- Weekly schedule
- Soft dry (dehumidification)
- Fan speed control

Optional Accessories:

- Wireless Handheld Remote Controller³ - PQWRHDF0
- LG Programmable Thermostat - PREMTB10U
- Simple Controller with Mode (Black) - PQRCVCL0Q
- Simple Controller with Mode (White) - PQRCVCL0QW
- Simple Controller without Mode (Black) - PQRCHCA0Q
- Simple Controller without Mode (White) - PQRCHCA0QW
- Dry Contact Unit (1 contact, 24 VAC external power) - PQDSB1
- Dry Contact with Economizer Interface - PQDSBC1
- Dry Contact for Third Party Thermostat - PQDSBNGCM1
- Wall Mounted Temperature Sensor - PQRSTA0

Unit Data:

Refrigerant Type	R410A
Refrigerant Control	EEV
Sound Pressure ⁴ dB(A) (H/M/L)	43/40/37
Filter Type	Washable
Filter Quantity	3
Filter Dimensions	13-3/8"x7-1/4"x3/4"
Net Unit Weight (lbs)	60
Shipping Weight (lbs)	71

Fan:

Type	Sirocco
Fan Quantity	4
Motor/Drive	Brushless Digitally Controlled/Direct
Motor Quantity	2
Airflow Rate H/M/L (CFM)	635/565/494

Notes:

1. See Engineering Manual for sensible and latent capacities.
2. The Power Input is rated at high speed.
3. Requires an LG Programmable Thermostat, Simple Controller with Mode or a Simple Controller without Mode.
4. Sound Pressure levels are tested in an anechoic chamber under ISO Standard 3745.
5. All communication cable to be minimum 18 AWG, 2-conductor, stranded, shielded and must comply with applicable local and national code.
6. Power wiring cable size must comply with the applicable local and national code.
7. This unit comes with a dry nitrogen charge.
8. This data is rated 0 ft above sea level, with 25 ft of refrigerant line per indoor unit and a 0 ft level difference between outdoor and indoor units. All capacities are net with a combination ratio between 95 – 105%.
9. Must follow installation instructions in the applicable LG installation manual.



Job Name/Location:

ARNU243CFU2

Multi V™ Floor Standing (without case)

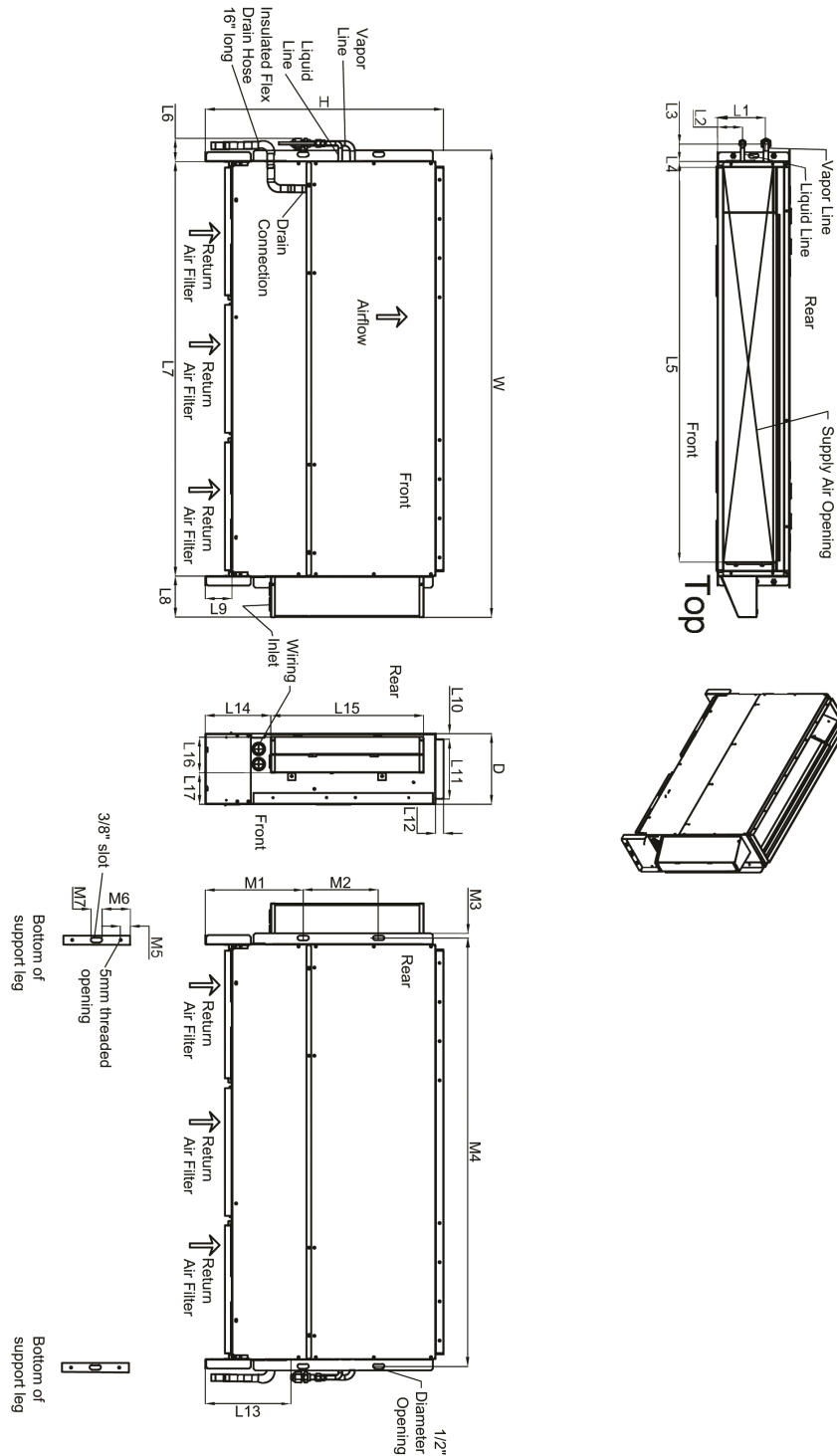
24,200 Btu/h Indoor Unit



Tag #:

Date:

PO No.:



W	49-7/16"
H	25-3/16"
D	7-1/2"
L1	5-1/16"
L2	2-5/8"
L3	1-13/16"
L4	9/16"
L5	42-3/16"
L6	2-3/8"
L7	43-1/4"
L8	4-5/16"
L9	2-3/4"
L10	9/16"
L11	6-5/16"
L12	1-3/16"
L13	11"
L14	8-7/16"
L15	16-1/8"
L16	3-13/16"
L17	3-5/16"
M1	10-3/8"
M2	7-13/16"
M3	1/2"
M4	44-3/4"
M5	1-11/16"
M6	3-5/16"
M7	1"

All dimensions have a tolerance of ± 0.25 in.