

Job Name/Location:

Tag #:

Date:

For:  File  Resubmit

PO No.:

Approval  Other \_\_\_\_\_

Architect:

GC:

Engr:

Mech:

Rep:

(Company)

(Project Manager)



**ARNU963B8A2**  
**Multi V™ Ducted (High Static)**  
**95,900 Btu/h Indoor Unit**



**Performance:**

Total Cooling Capacity (Btu/h)	95,900
Heating Capacity (Btu/h)	107,500
Power Input <sup>1</sup> (W)	800

Cooling Nominal Test Conditions:

Indoor: 80°F DB/67°F WB

Outdoor: 95°F DB

Heating Nominal Test Conditions:

Indoor: 70°F DB

Outdoor: 47°F DB/43°F WB

**Electrical:**

Power Supply (V/Hz/∅)	208-230/60/1
Rated Amps (A)	4.5

**Piping:**

Refrigerant:

Liquid Line (in, OD)	3/8 Flare
Vapor Line (in, OD)	7/8 Flare

Condensate:

Condensate Pump Drain <sup>2</sup> (in,OD)	1 Plain
Gravity Drain Plugged (in, OD)	1 MPT

**Controls Features:**

- Auto changeover (Heat Recovery only)
- Auto operation
- Auto restart
- Child lock
- Dual thermistor control
- Group control
- Hot start
- Self diagnostics
- Sleep mode
- Timer (on/off)
- Weekly schedule
- Soft dry (dehumidification)
- Fan speed control

**Optional Accessories:**

- Wireless Handheld Remote Controller<sup>3</sup> - PQWRHDF0
- LG Programmable Thermostat - PREMTB10U
- Simple Controller with Mode (Black) - PQRCVCL0Q
- Simple Controller with Mode (White) - PQRCVCL0QW
- Simple Controller without Mode (Black) - PQRCHCA0Q
- Simple Controller without Mode (White) - PQRCHCA0QW
- Dry Contact Unit (1 contact, 24 VAC external power) - PQDSB1
- Dry Contact with Economizer Interface- PQDSBC1
- Dry Contact for Third Party Thermostat - PQDSBNGCM1
- Wall Mounted Temperature Sensor - PQRSTA0
- High Efficiency Filter Box for B8 HSD Chassis - ZFBXB801A
- Dynamic V8 2VL Low Profile Air Cleaner - ZPLMV201A
- Dynamic V8 4VL Air Cleaner - ZPLMV402A
- Dynamic V8 VL Replacement Filter Pads (4-Pack) - ZFLT1301A
- Dynamic V8 VL Replacement Filter Pads (24 Pack) - ZFLT1302A
- Return Air Grille - Louvered (one per plenum) - ZGRLRA01A
- Return Air Grille - Egg Crate (one per plenum) - ZGRLRA02A
- 2VL Low Profile Return Air Plenum - ZPLMV201A
- 4VL Return Air Plenum - ZPLMV402A

**Entering Mixed Air:**

Cooling Max <sup>4</sup> (°F WB)	76
Heating Min (°F DB)	59

**Unit Data:**

Refrigerant Type	R410A
Refrigerant Control	EEV
Sound Pressure <sup>5</sup> dB(A) (H/M/L)	52/50/50
Filter Type	Washable
MERV	N/A
Filter Quantity	1
Filter Dimensions <sup>6</sup>	16-1/2" x 55" x 1/4"
Net Unit Weight (lbs)	192
Shipping Weight (lbs)	212

**Fan:**

Type	Sirocco
Fan Quantity	2
Motor/Drive	Brushless Digitally Controlled/Direct
Motor Quantity	2
Airflow Rate H/M/L (CFM)	2,542/2,260/2,260
External Static Pressure (ESP) <sup>7</sup> (in wg)	0.86
Minimum ESP/Fan Setting Value <sup>8</sup>	0.47/76
Maximum ESP/Setting Value <sup>8</sup>	0.98/105

**Notes:**

- 1.The Power Input is rated at high speed.
- 2.Maximum lift is 27 in from bottom of unit. Check valve not included (field supplied).
- 3.Requires an LG Programmable Thermostat, Simple Controller with Mode or a Simple Controller without Mode.
- 4.See Engineering Manual for sensible and latent capacities.
- 5.Sound Pressure levels are tested in an anechoic chamber under ISO Standard 3745.
- 6.Actual filter sizes may vary.
- 7.At factory fan speed setting.
8. Maximum static pressure may result in reduced airflow (CFM).
- 9.All communication cable to be minimum 18 AWG, 2-conductor, stranded, shielded and must comply with applicable local and national code.
- 10.Power wiring cable size must comply with the applicable local and national code.
- 11.This unit comes with a dry nitrogen charge.
- 12.This data is rated 0 ft above sea level, with 25 ft of refrigerant line per indoor unit and a 0 ft level difference between outdoor and indoor units. All capacities are net with a combination ratio between 95 – 105%.
- 13.Must follow installation instructions in the applicable LG installation manual.



# ARNU963B8A2

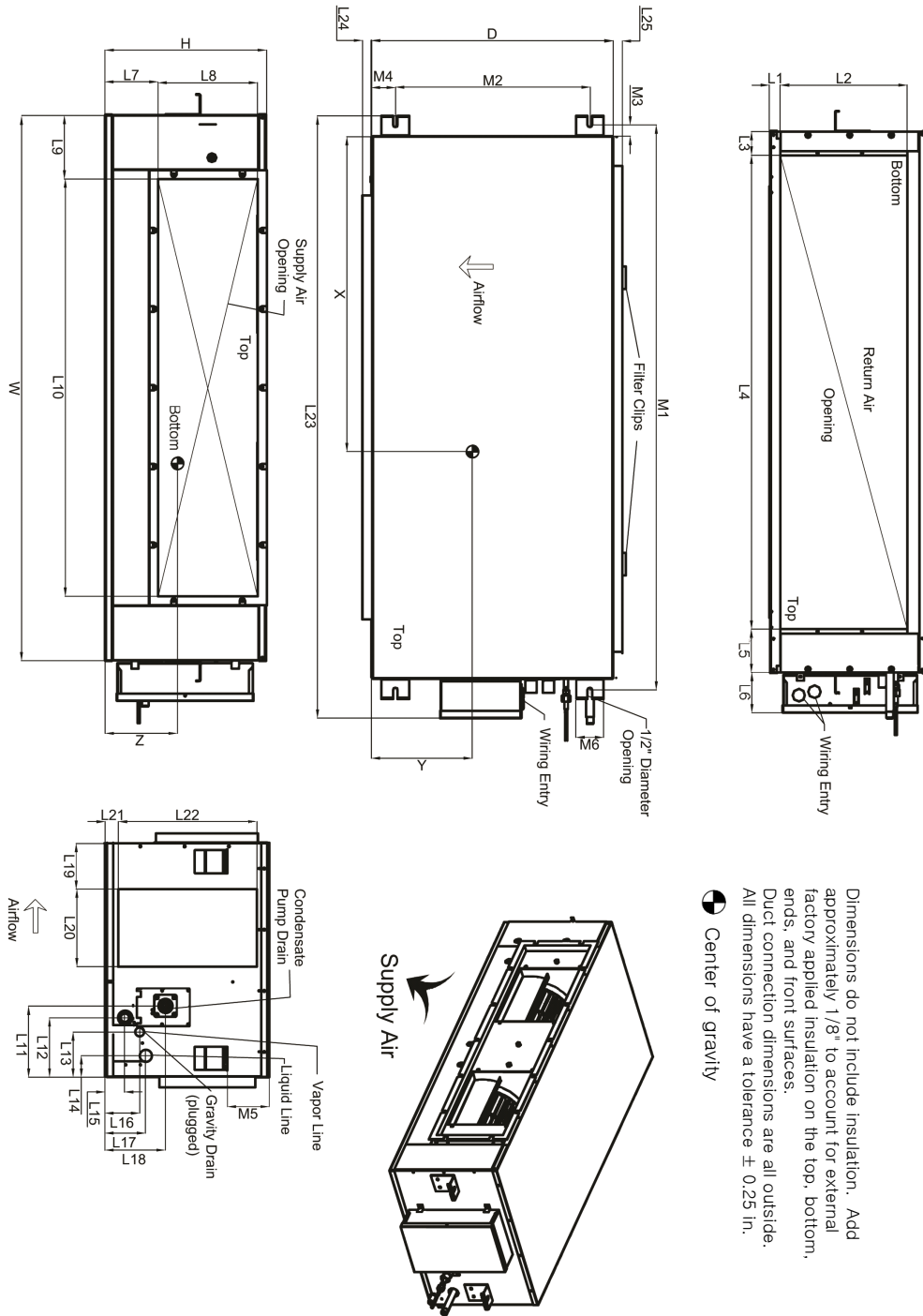
Multi V™ Ducted (High Static)  
95,900 Btu/h Indoor Unit



Tag #:

Date:

PO No.:



⊕ Center of gravity

Dimensions do not include insulation. Add approximately 1/8" to account for external factory applied insulation on the top, bottom, ends, and front surfaces. Duct connection dimensions are all outside. All dimensions have a tolerance ± 0.25 in.

W	61-3/4"
D	27-1/8"
H	18-1/8"
L1	1'
L2	15-7/16"
L3	2-5/16"
L4	55-1/16"
L5	4-3/8"
L6	4-1/2"
L7	6
L8	11-5/8"
L9	8-3/4"
L10	44-1/4"
L11	7-5/8"
L12	5-1/2"
L13	5-7/16"
L14	2-1/2"
L15	1-1/8"
L16	4"
L17	4-1/2"
L18	6-7/8"
L19	6-3/4"
L20	9-3/16"
L21	1-1/2"
L22	15-7/16"
L23	68-9/16"
L24	1'
L25	1-1/8"
M1	64-1/8"
M2	23"
M3	1-3/16"
M4	2-1/2"
M5	4-1/8"
M6	2-3/4"

**Center of Gravity**  
**ARNU963B8A2**

X	31-1/16"
Y	18-1/8"
Z	8-3/4"