

Job Name : _____
 Purchaser : _____
 Engineer : _____
 Submitted To : _____
 Submitted By : _____
 Unit Designation : Schedule No.:

Location : _____
 P.O. No. : _____
 Architect : _____
 Date : _____
 For : Reference Approval Construction
 Model No.:

Submittal Data : PQCSS520A0E AC Manager for Multi V™



Standard Feature :

- Large size Central Control for Individual Unit, Zone and Group
- Maximum Number of ACP to control 16
- Maximum Number of Indoor Units 256 x 16
- Easy User Interface with Icon or List Views
- PDI Connection available for Individual Power Consumption
- Data Print Function
- Available Functions
 - Monitoring / Control Mode, Set Temp, Fan Speed, Peak Power Control, Function Lock
 - Schedule Lock Schedule, Time Limiting
 - History Save Operation and Error
 - Auto Control Auto Changeover, Set Temp. Limiting
 - Setting Password for Administrator
- Auto Addressing
- Emergency Stop
- Multiple 5 Languages E/S/I/F/G

Hardware :

- Program CD 1
- Hard Lock Key 1

Display & Menu :

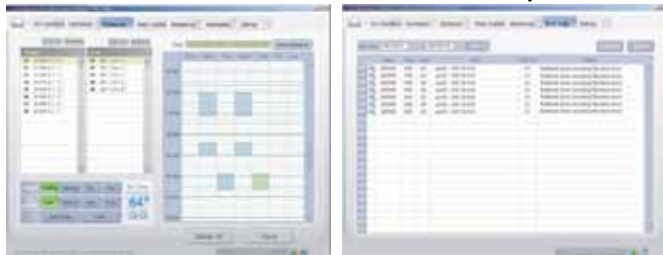
Basic Control

Group Icon View



Schedule

History



Note :

