

Job Name/Location:

Tag #:

Date:

For: File Resubmit

PO No.:

Approval Other _____

Architect:

GC:

Engr:

Mech:

Rep:

(Company)

(Project Manager)



PQWRHDF0

LMN186HVT
Flex Multi-Split Standard
18,000 Btu/h Indoor Unit



Performance:

Nominal Capacity (Btu/h)	18,000
Cooling Nominal Test Conditions:	Heating Nominal Test Conditions:
Indoor: 80°F DB/67°F WB	Indoor: 70°F DB/60°F WB
Outdoor: 95°F DB/75°F WB	Outdoor: 47°F DB/43°F WB

Entering Mixed Air:

Cooling (°F DB)	54-73
Heating (°F DB)	61-86

Electrical:

Power Supply (V/Hz/∅)	208-230/60/1
Rated Amps (A)	0.30

Unit Data:

Refrigerant Type	R410A
Refrigerant Control:	EEV
Sound Pressure H/M/L (±3 dB(A))	37/33/28
Primary Filter	Washable Pre-filter
Secondary Filter	Plasma
Net Unit Weight (lbs)	37.5
Shipping Weight (lbs)	41.8
Communication Cable (No x AWG)	4 x 18

Piping:

Liquid Line (in, OD)	1/4
Vapor Line (in, OD)	1/2
Drain OD, ID (in)	13/16, 5/8
Temperature Sensor	Thermistor
Max Length Each Pipe (ft)	82
Max Elevation between ODU and IDU (ft)	49.2
Max Elevation between IDU and IDU (ft)	24.6

Fan:

Type	Cross Flow
Quantity	1
Motor/Drive	Brushless Digitally Controlled/Direct
Airflow Rate H/M/L (CFM)	572/502/434
Dehumidification Rate (pts/h)	4.0

Controls Features:

- 4-Way auto swing
- 24-Hour on/off timer
- Auto operation (artificial intelligence)
- Auto restart
- Chaos wind
- Inverter (variable speed fan)
- Jet Cool/Jet Heat
- Plasma air purifying system
- Self-cleaning indoor coil
- Sleep mode

Standard Features:

- Limited Warranty with LG Certified Installation
- Limited Two Year Functional Parts Warranty

Optional Accessories:

- PI485 - PMNFP14A0
- 7-Day Programmable Controller (Black) - PQRCVSL0
- 7-Day Programmable Controller (White) - PQRCVSL0QW
- Simple Controller with Mode (Black) - PQRCVCL0Q
- Simple Controller with Mode (White) - PQRCVCL0QW
- Simple Controller without Mode (Black) - PQRCHCA0Q
- Simple Controller without Mode (White) - PQRCHCA0QW
- AC Smart II - PQCSW320A1E
- ACP without Digital I/O - PQCPA11A03
- ACP with Digital I/O - PQCPB11A0E
- LonWorks Gateway - PQNFB16A1
- BACnet Gateway - PQNFB17B0

Notes:

1. See Engineering Manual for sensible and latent capacities.
2. Sound Pressure levels are tested in an anechoic chamber under ISO Standard 1996.
3. All communication cable to be minimum 18 AWG, 2-conductor, stranded, shielded and must comply with applicable local and national code.
4. Power wiring cable size must comply with the applicable local and national codes.
5. This unit comes with a dry nitrogen charge.
6. This data is rated 0 ft above sea level, with 24.6 ft of refrigerant line per indoor unit and a 0 ft level difference between outdoor and indoor units. All capacities are net with a combination ratio between 95 – 105%.
7. Must follow installation instructions in the applicable LG installation manual.



Job Name/Location:

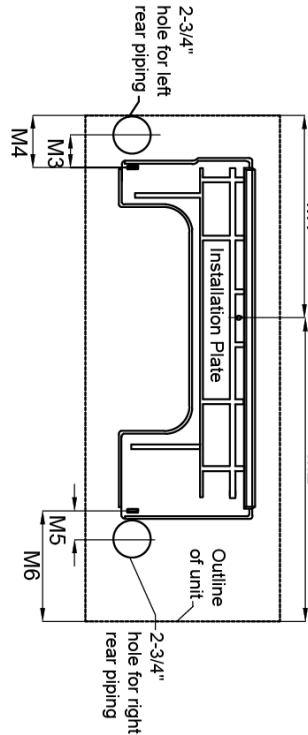
LMN186HVT
 Flex Multi-Split Standard
 18,000 Btu/h Indoor Unit



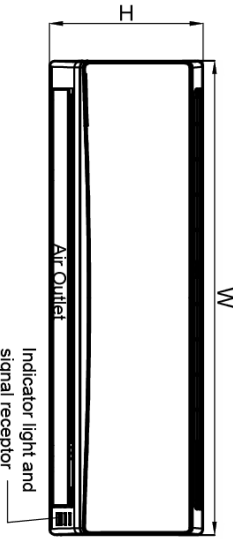
Tag #:

Date:

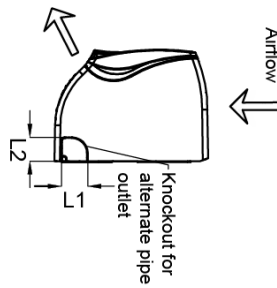
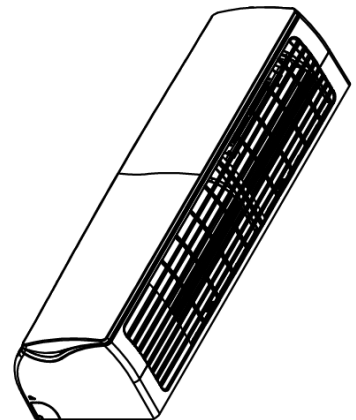
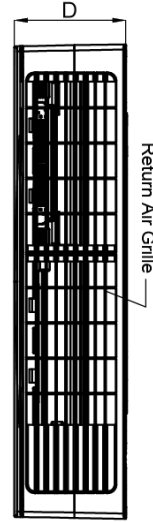
PO No.:



Front View



Top View



W	40 9/16"
D	9 27/32"
H	12 25/32"
L1	1 31/32"
L2	1 25/32"
M1	18 1/8"
M2	22 7/16"
M3	2 23/32"
M4	4 1/8"
M5	2 7/32"
M6	8 5/32"