

Job Name/Location:

Tag #:

Date:

For:	File	Resubmit
	Approval	Other_____

PO No.:

Architect:

GC:

Engr:

Mech:

Rep:

(Company)

(Project Manager)

LH248HHV4

Single Zone High Static Ducted with LGRED°

Outdoor Unit (ODU) - LUU240HHV, Indoor Unit (IDU) - LHN248HV

Performance:**Cooling:**

Cooling Capacity (Min~Rated~Max, Btu/h)	9,200 ~ 23,000 ~ 32,000
SEER	18.2
EER	12.50

SEER - Seasonal Energy Efficiency Ratio

EER - Energy Efficiency Ratio

Heating:

Heating Capacity (Min~Rated~Max, Btu/h)	8,000 ~ 27,000 ~ 36,000
HSPF	10.8
Max Heating @ Indoor 70° DB (Btu/h)	
Outdoor 17°F WB	30,120
Outdoor 5°F WB	27,000
Outdoor -4°F WB	24,250
Outdoor -13°F WB	21,600

HSPF - Heating Seasonal Performance Factor

Cooling Nominal Test Conditions:

Indoor: 80°F DB / 67°F WB

Outdoor: 95°F DB / 75°F WB

Heating Nominal Test Conditions:

Indoor: 70°F DB / 60°F WB

Outdoor: 47°F DB / 43°F WB

Electrical:

Power Supply ¹ (V/Hz/Ø)	208-230/60/1
MOP (A)	30
MCA (A)	22
Cooling / Heating Rated Amps (A)	8.2 / 9.2
Compressor(A)	14.5
Fan Motor (IDU + ODU) (A)	2.2
Cooling Power Input (min~rated~max,kW)	0.66 ~ 1.84 ~ 3.49
Heating Power Input (min~rated~max,kW)	0.58 ~ 2.08 ~ 4.10
Locked Rotor Amps (A)	23

MOP - Maximum Overcurrent Protection

MCA - Minimum Circuit Ampacity

Piping:

Installed Liquid Pipe (in., O.D.)	3/8 Flare
Installed Vapor Pipe (in., O.D.)	5/8 Flare
IDU Liquid Connection (in., O.D.)	3/8 Flare
IDU Vapor Connection (in., O.D.)	5/8 Flare
Additional Refrigerant (oz./ft.)	0.43
Min./Max. Pipe Length ² (ft.)	16.4 / 164
Piping Length (no add'l refriger., ft.)	24.9
Max. Elevation (ft.)	98.4

Features:

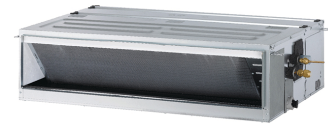
- Auto ESP function
- Hot start
- Internal condensate pump
- ODU drain pan heater
- Inverter (variable speed fan)
- Auto restart
- Control lock
- Group control
- Timer (on/off)
- Sleep mode
- Optional Wi-Fi Control
- Night quiet function
- IDU compatible with Multi F ODU's (24k, 36k models)

Required Accessories:

- ☐ Controller (any LG wired remote controller)

Optional Accessories:

- ☐ MultiSITE™ CRC1 - PREMTBVCO
☐ MultiSITE CRC1+ - PREMTBVC1
☐ Standard RS3 Controller-PREMTB100
☐ AC Smart 5 - PAC55A000
☐ Simple Controller - PREMTB000
☐ Wi-Fi module - PWFMD200
☐ ACP 5 - PACP5A000
- ☐ Dynamic V8 2VL Low Profile Air Cleaner - ZPLMV201A
☐ Dry Contact (Simple) - PDRYCB100
☐ Dry Contact (3rd Party) - PDRYCB320
☐ Dry Contact (Setback) - PDRYCB400
☐ PI-485 - PMNFP14A1
☐ Aux Heater Relay Kit - PRARH1
☐ High Efficiency Filter Box - ZFBXM101A

**Operating Range:****Outdoor Unit:**

Cooling (°F DB)	5 to 118
Heating (°F WB)	-13 to 64

Indoor Unit:

Cooling (°F WB)	57 to 77
Heating (°F DB)	59 to 81

System Data:

Refrigerant Type	R410A
Refrigerant Control	EEV
Refrigerant Charge (lbs.)	4.4
ODU Sound Pressure Max (Cool / Heat) ±1 dB(A) ³	51 / 52
IDU Sound Pressure (H/M/L) ±1 dB(A) ³	37 / 35 / 34
ODU Net / Shipping Weight (lbs.)	133.4 / 144.4
IDU Net / Shipping Weight (lbs.)	58.6 / 71.9
Heat Exchanger Coating	GoldFin™

Fan:

ODU / IDU Fan Type	Propeller/ Sirocco
Fan Speeds (Fan/Cool/Heat)	3 / 3 / 3
Fan Quantity (ODU + IDU)	1 + 1
Motor/Drive	Brushless Digitally Controlled/Direct
Maximum ODU Air Volume (CFM)	2,048
IDU Air Volume (H/M/L) (CFM)	777 / 706 / 636
Dehumidification Rate (pts/hr)	3.48
IDU External Static Pressure (ESP)	
Operating Range (min ~ default ~ max) (in-wg)	0.1 ~ 0.24 ~ 0.59

Notes:

1. Acceptable operating voltage: 187V-253V.
2. Piping lengths are equivalent.
3. Sound Pressure levels are tested in an anechoic chamber under ISO Standard 3745.
4. Maximum static pressure may result in reduced airflow (CFM).
5. All communication / connection (power) cable from the outdoor unit to the indoor unit is field supplied and is to be minimum four-conductor, 14 AWG, stranded, shielded or unshielded (if shielded, it must be grounded to the chassis of the outdoor unit only), and must comply with applicable local and national codes.
6. See Engineering Manual for sensible and latent capacities.
7. Power wiring cable size must comply with the applicable local and national code.
8. The indoor unit comes with a dry helium charge.
9. This data is rated 0 ft. above sea level, with 24.6 ft. of refrigerant line and a 0 ft. level difference between outdoor and indoor units.
10. Must follow installation instructions in the applicable LG installation manual.



For a complete list of available accessories, contact your LG representative.

For continual product development, LG reserves the right to change specifications without notice.

© LG Electronics Canada, Inc., North York, ON. All rights reserved. "LG Life's Good" is a registered trademark of LG Corp. /www.lgdfs.ca

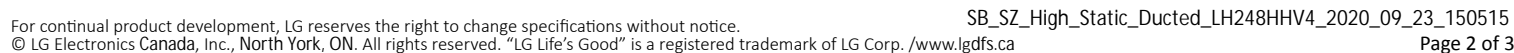
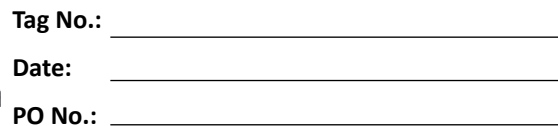
SB_SZ_High_Static_Ducted_LH248HHV4_2020_09_23_150515

Page 1 of 3

LH248HHV4

Single Zone High Static Ducted with LGRED°

Outdoor Unit (ODU) - LUU240HHV, Indoor Unit (IDU) - LHN248HV



LH248HHV4
Single Zone High Static Ducted with LGRED°
Outdoor Unit (ODU) - LUU240HHV, Indoor Unit (IDU) - LHN248HV



PO No.: _____

