

Job Name/Location:

Tag #:

Date:

For: ☐ File ☐ Resubmit

PO No.:

☐ Approval ☐ Other

Architect:

GC:

Engr:

Mech:

Rep:

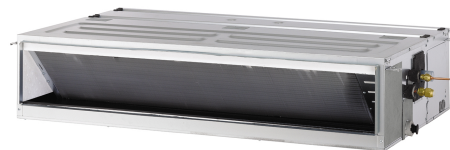
(Company)

(Project Manager)

ARNU183M1A4

Multi V™ High Static Ducted

19,100 Btu/h Indoor Unit

**Performance:**

Total Cooling Capacity (Btu/h)	19100
Heating Capacity (Btu/h)	21500
Max Power Input <sup>1</sup> (W)	190
L/M/H Power Input at Factory Default (W)	55 / 63 / 85

Rated capacity is certified under AHRI Standard 1230. Ratings are subject to change without notice. Current certified ratings are available at [www.ahridirectory.org](http://www.ahridirectory.org).

**Electrical:**

Power Supply (V/Hz/Ø)	208-230/60/1
Rated Amps (A)	1.6

**Piping:****Refrigerant:**

Liquid Line (in, OD)	1/4 Flare
Vapor Line (in, OD)	1/2 Flare

**Condensate:**

Condensate Pump Drain <sup>2</sup> (in, ID)	1 Plain
Gravity Drain Plugged (in, OD)	1 MPT

**Controls Features:**

- Auto changeover (Heat Recovery only)
- Auto operation
- Auto restart
- Dual thermistor control
- Wi-Fi compatible
- Dual setpoint control
- Multiple aux heater applications
- Filter life display
- External on/off control
- Auto fan
- Leak detection
- Weekly schedule
- Fan speed control
- Group control
- Hot start
- Self diagnostics
- Timer (on/off)
- Child lock

**Optional Accessories:**

- ☐ Wireless Remote Controller<sup>3</sup> - PQWRHQ0FDB
- ☐ Premium Controller - PREMTA000
- ☐ MultiSITE CRC1 Controller - PREMTBVC0
- ☐ MultiSITE CRC1+ Controller - PREMTBVC1
- ☐ Simple Controller - PREMTCC00U
- ☐ Wi-Fi Module - PWFMD200
- ☐ Simple Dry Contact (1 contact, 24 VAC external power) - PDRYCB100
- ☐ Dry Contact for Economizer - PDRYCB400
- ☐ Dry Contact for Third Party Thermostat - PDRYCB320
- ☐ Aux Heater Kit - PRARH1
- ☐ Remote Temperature Button Sensor - ZRTBS01
- ☐ High Efficiency Filter Box - ZFBXM101A
- ☐ RS3 Remote Controller- PREMTB100

**Entering Mixed Air:**

Cooling Max <sup>4</sup> (°F WB)	76
Heating Min (°F DB)	59

**Unit Data:**

Refrigerant Type	R410A
Refrigerant Control	EEV
Sound Power <sup>5</sup> dB(A) (H/M/L, @0.24 ESP)	49 / 47 / 43
Filter Type	Washable
MERV	N/A
Filter Quantity	2
Filter Dimensions <sup>6</sup> (in)	9-1/16 x 33-7/16 x 3/16
Net Unit Weight (lbs)	56.0
Shipping Weight (lbs)	67.0

**Fan:**

Type	Sirocco
Fan Quantity	2
Motor/Drive	Brushless Digitally Controlled/Direct
Motor Quantity	1
Standard Mode Airflow Rate H/M/L (CFM)	606 / 493 / 413
Standard Mode External Static Pressure (ESP) <sup>7</sup> (in wg)	0.10
High Mode Airflow Rate H/M/L (CFM)	638 / 556 / 392
High Mode External Static Pressure (ESP) <sup>7</sup> (in wg)	0.24
Airflow Range (CFM)	216 - 906
Minimum ESP (in wg) <sup>8</sup>	0.08
Maximum ESP (in wg) <sup>8</sup>	0.59

**Notes:**

- Maximum power input is rated at maximum setting value.
- Maximum lift is 27 in from bottom of unit. Check valve not included (field supplied).
- Requires an LG wall controller because ducted units do not have infrared receiver.
- See Engineering Manual for sensible and latent capacities.
- Sound Power level is measured using rated conditions, and tested in a reverberation room per ISO 3741 standards.
- Actual filter sizes may vary.
- At factory fan speed setting.
- Maximum static pressure may result in reduced airflow (CFM).
- All Communication cable between Master outdoor units to indoor units / heat recovery units to be 18 AWG, 2-conductor, twisted, stranded, shielded. Ensure the communication cable shield is properly grounded to the Master outdoor unit chassis only. Do not ground the outdoor unit to indoor units / heat recovery units communication cable at any other point. Wiring must comply with all applicable local and national codes.
- Power wiring cable size must comply with the applicable local and national code.
- This unit comes with a dry nitrogen charge.
- All capacities are net with a combination ratio between 95 – 105%.
- Must follow installation instructions in the applicable LG installation manual.



For continual product development, LG reserves the right to change specifications without notice.

Job Name/Location:

ARNU183M1A4  
Multi V™ High Static Ducted  
19,100 Btu/h Indoor Unit



Tag #:

Date:

PO No.:

