



# LGRED° Systems

## Superior year-round heating and cooling

---

LG Air Conditioning Technologies

---





# INNOVATIVE COMFORT

Home Comfort Solutions by LG allow you to cool or heat your entire home or a single room without the need for invasive ductwork, which means no tearing down of walls or altering the appearance of your home. With LG, you can heat or cool any room to your favorite temperature!



## How It Works

LG air conditioning systems for residential and light commercial applications consist of three basic components: an energy efficient inverter-driven outdoor unit, a stylish and quiet indoor unit that delivers conditioned air to the room, and compact conduit for refrigerant lines and wiring that connects the units. This design allows for energy conservation by targeting only those areas that need cooling or heating, a cost-effective feature when only certain portions of a building or home are being used.

## The Advantages of Inverter Technology

Inverter variable speed outdoor units are measurably quieter and use less energy than conventional air conditioners, which continuously cycle on/off. Instead, an inverter compressor ramps up or down as needed to efficiently maintain comfort levels.



## ENERGY EFFICIENT



## SEER: Your Guide to Cool Savings

An acronym for Seasonal Energy Efficiency Ratio, SEER is the industry-wide rating for energy consumption. The higher the number, the more efficiently a product will produce cool air, while conserving our natural resources. Your contractor will be happy to explain SEER numbers in greater detail, and help determine which LG duct-free split system is right for you.

## HSPF: For Cost-Saving Coziness

Heating Seasonal Performance Factor, or HSPF, represents total heating output relative to electricity used. Like SEER, the higher the HSPF rating, the more efficiently a product will warm air. In climates where heating is necessary in winter months as well as cooling in the summer, ask your contractor to suggest the ideal LG duct-free split system.

Stay comfortable all year long with industry-leading LGRED° heat technology.

**LGRED°**

Powerful Heat Technology  
RELIABLE TO EXTREME DEGREES

## WHAT IS LGRED° HEAT TECHNOLOGY?

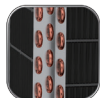
Products featuring LGRED° heat (Reliable to Extreme Degrees) boast superior performance under challenging conditions. Be toasty warm even in the coldest winter months, when traditional units are unable to keep up with demand. Expect 100% heating capacity down to -15° C and continuous heating operation, even when it's -25° C outside.

## WHAT ARE ADVANTAGES OF LG SYSTEMS WITH LGRED° HEAT?

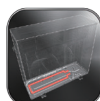
LG Systems with LGRED° offer all of the traditional benefits of LG duct-free and inverter technology while delivering industry-leading heating performance.

## Multi Heating LGRED° Version

Products featuring LGRED° heat technology boast superior heating performance: 100% of rated heating capacity performance at -15°C and continuous heating down to -25°C! This increased performance not only delivers heat without the reliance on fossil fuel energy sources but also operates with incredible efficiency even in the coldest climates.

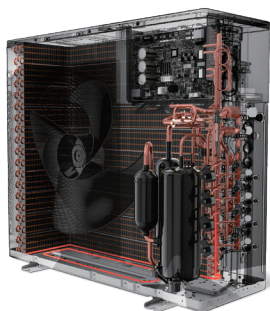


**Triple-Pass Gold Fin™ Coil**  
For maximum performance and longevity



**Factory-Installed Base Pan Heater**

Ensures reliable winter heating operation



**High-Speed Twin Rotary DUAL Inverter Compressor™**

100Hz operation for 100% of rated performance even -15°C



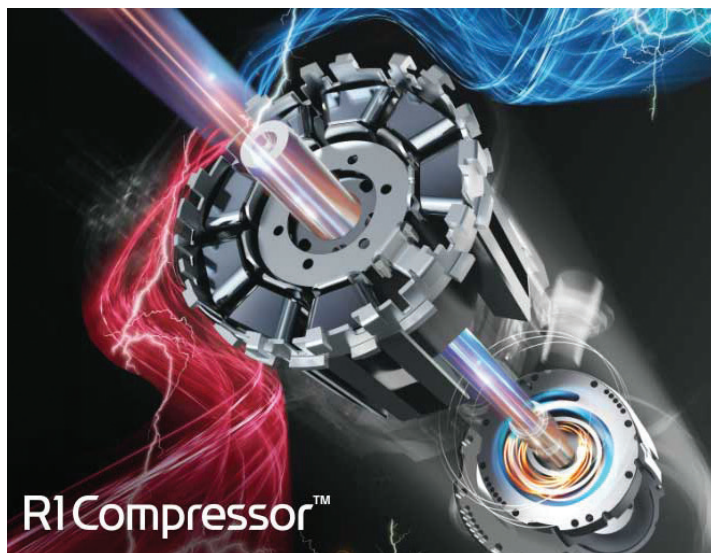
**Advanced Canada-designed control logic**

Ensures maximum performance with full reliability in all conditions



**Dual-Coil Heating System**

Prevents ice accumulation and ensures reliability even at -25°C



**R1 Compressor™**

**Reliable R1 Compressor™**

R1 Compressor is a new concept of scroll compressor that combines high-efficiency, low sound levels of the scroll and the simple structure of the rotary compressor.



## CONNECT for more CONVENIENCE with LG ThinQ

LG provides built-in Wi-Fi connectivity, which means you don't have to pay extra money for the dongle to get smart functionality. Control systems from anywhere using the LG ThinQ® app including voice-control through Amazon, Alexa, and Google Home.



## 10 Year Warranty

Use LG Prestige with peace of mind. With the warranty, it will allow users to experience LG's air conditioners that cool faster, last longer and run quieter. To enjoy the benefit of 10 year parts and compressor warranty, please register your product at [LG.ca](http://LG.ca)

## Choose the internal unit that is more suitable for your needs

Depending on the characteristics of your home, you can choose from our wide range of indoor units, from wall mount models to cassette, to customize your system according to your needs and your tastes.

## LGRED° Indoor Units



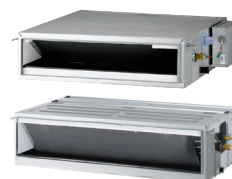
**DUALCOOL**  
Six Capacities  
7,000 - 24,000 BTU



**ARTCOOL**  
Three Capacities  
9,000 - 18,000



**Ceiling Cassette**  
Three Capacities  
9,000 - 18,000 BTU



**Horizontal Air Handler**  
Five Capacities  
9,000 - 36,000 BTU



**4-Position Central System Air Handler**  
Three Capacities  
18,000 - 36,000 BTU  
(42,000 & 48,000 BTU Available)



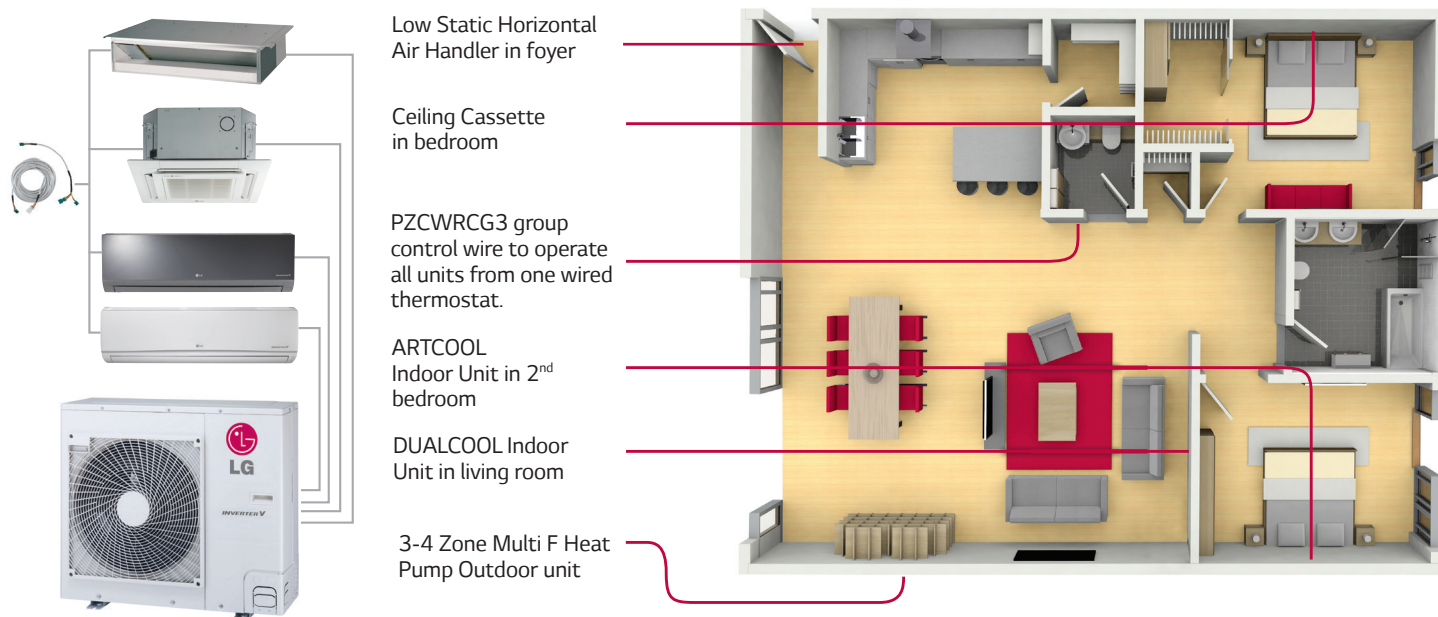
# YEAR-ROUND COMFORT IN ALL AREAS OF YOUR HOME

## Benefits of LG Multi F systems:

LG Multi F whole-house comfort systems provide powerful, efficient heating and cooling with up to eight indoor units operating off a single outdoor unit. In fact, most combinations are Energy Star. Individual room temperature control with low operating cost are at your fingertips with LG Multi F. Installation is easy and does not require major renovation – the pipes connecting your outdoor unit to

the indoor units are small and easy to run throughout your house. Your contractor can usually install a whole house system in just a few days start-to-finish and adding an additional indoor unit down the road is simple and cost-effective. Using three or more indoor units is more cost-effective and uses less space than installing three individual single-zone systems.

## Multi Zone Comfort



For truly personalized comfort in all rooms, consider an LG Duct-Free Split heat pump system. LG heat pump systems make it easier to provide customized cooling and heating in every room without any bulky window units or costly ductwork, and with several indoor unit designs sure to match any décor, LG heat pump systems can be right for every job.



# MULTI F OUTDOOR UNITS

Model	Specification	Unit	LMU180HV	LMU240HV	LMU30CHV	LMU36CHV	LMU481HV	LMU541HV	LMU600HV
Capacity	Rated Cooling Capacity	Btu/h	17,000	20,000	30,000	32,000	48,000	50,500	60,000
	Cooling Capacity Range	Btu/h	8,400 ~ 21,600	8,400 ~ 25,000	8,400 ~ 36,000	8,400 ~ 38,400	10,800 ~ 58,000	10,800 ~ 63,200	10,800 ~ 65,000
	Rated Heating Capacity	Btu/h	22,000	24,600	32,000	36,000	54,000	58,000	64,000
	Heating Capacity Range	Btu/h	10,248 ~ 24,000	10,080 ~ 25,000	9,240 ~ 38,400	9,240 ~ 41,600	12,420 ~ 59,000	12,420 ~ 64,000	12,420 ~ 68,000
	Max Heating Capacity at -8°C <sup>1</sup>	Btu/h	20,200	21,400	29,800	32,400	44,770	45,750	56,500
	Max Heating Capacity at -15°C <sup>1</sup>	Btu/h	17,700	18,000	26,600	28,000	38,120	38,600	52,500
	Max Heating Capacity at -20°C <sup>1</sup>	Btu/h	14,800	14,800	22,800	24,000	33,210	33,550	45,200
	SEER / EER <sup>2</sup>		22.5, 13.5	22.5, 13.5	22, 13	22, 13	20.8, 12.8	20.6, 12.6	18.5, 11
Power	HSPF <sup>2</sup>		11	11	10	10	10.5	10	10.5
	Voltage	V, Ø, Hz	208/230-1-60	208/230-1-60	208/230-1-60	208/230-1-60	208/230-1-60	208/230-1-60	208/230-1-60
	Cooling Power Input	kW	1.33	1.75	2.31	2.46	3.75	4.01	5.31
	Heating Power Input	kW	1.79	1.72	2.49	2.74	4.52	5.07	5.44
Dimensions & Weight	MCA / MOCP	A	15.8, 20	16, 20	16.6, 25	17.9, 25	32.7, 40	32.7, 40	32.7, 40
	ODU Dimensions (WxHxD)	in	34 <sup>1</sup> / <sub>4</sub> x 25 <sup>1</sup> / <sub>32</sub> x 13	34 <sup>1</sup> / <sub>4</sub> x 25 <sup>1</sup> / <sub>32</sub> x 13	37 <sup>1</sup> / <sub>32</sub> x 32 <sup>27</sup> / <sub>32</sub> x 13	37 <sup>1</sup> / <sub>32</sub> x 32 <sup>27</sup> / <sub>32</sub> x 13	37 <sup>1</sup> / <sub>32</sub> x 54 <sup>1</sup> / <sub>32</sub> x 13	37 <sup>1</sup> / <sub>32</sub> x 54 <sup>1</sup> / <sub>32</sub> x 13	37 <sup>1</sup> / <sub>32</sub> x 54 <sup>1</sup> / <sub>32</sub> x 13
	ODU Weight (Net/Shipping)	lbs	101/109.8	101.4/110.2	137/148	137/148	192/216	192/216	218/243
Unit Data	Minimum Connectable IDUs	Qty	2	2	2	2	2	2	2
	Maximum Connectable IDUs	Qty	2	3	4	4	8	8	8
	Max Total IDU Connected Capacity	Btu/h	24,000	33,000	40,000	48,000	65,000	73,000	81,000
Standard Warranty					5 Years Parts, 7 Years Compressor				
Limited Registered Warranty*					10 Years Parts, 10 Years Compressor				

# MULTI F OUTDOOR UNITS **WITH LGRED°**

Model	Specification	Unit	LMU180HHV	LMU240HHV	LMU300HHV	LMU361HHV	LMU421HHV	LMU480HHV
Capacity	Rated Cooling Capacity	Btu/h	18,000	24,000	28,400	36,000	42,000	48,000
	Cooling Capacity Range	Btu/h	8,400 ~ 19,980	8,400 ~ 30,000	8,400 ~ 34,080	10,800 ~ 47,000	10,800 ~ 53,000	10,800 ~ 58,000
	Rated Heating Capacity	Btu/h	22,000	26,000	28,600	45,000	48,000	52,500
	Heating Capacity Range	Btu/h	10,248 ~ 24,000	10,248 ~ 31,200	10,248 ~ 34,320	12,420 ~ 50,000	12,420 ~ 54,500	12,420 ~ 59,000
	Max Heating Capacity at -8°C <sup>1</sup>	Btu/h	23,600	28,500	31,600	49,600	53,200	56,500
	Max Heating Capacity at -15°C <sup>1</sup>	Btu/h	22,000	26,000	28,600	45,000	48,000	52,500
	Max Heating Capacity at -20°C <sup>1</sup>	Btu/h	21,050	23,880	25,550	40,000	42,000	48,450
	Max Heating Capacity at -25°C <sup>1</sup>	Btu/h	19,270	21,310	22,210	35,900	37,100	39,200
Power	SEER / EER <sup>2</sup>		21, 13.5	21, 13.5	20, 12.5	22, 14.5	21.5, 13.8	20.5, 13.1
	HSPF <sup>2</sup>		10.0	10.7	11.0	11.5	11.5	11.0
	Voltage	V, Ø, Hz	208/230-1-60	208/230-1-60	208/230-1-60	208/230-1-60	208/230-1-60	208/230-1-60
	Cooling Power Input	kW	1.33	1.78	2.27	2.48	3.04	3.66
Dimensions & Weight	Heating Power Input	kW	2.22	2.12	2.33	3.3	3.7	4.25
	MCA / MOCP	A	18.6, 30	19, 30	19.4, 30	32.7, 40	32.7, 40	32.7, 40
	ODU Dimensions (WxHxD)	in	37 <sup>1</sup> / <sub>32</sub> x 32 <sup>27</sup> / <sub>32</sub> x 13	37 <sup>1</sup> / <sub>32</sub> x 32 <sup>27</sup> / <sub>32</sub> x 13	37 <sup>1</sup> / <sub>32</sub> x 32 <sup>27</sup> / <sub>32</sub> x 13	37 <sup>1</sup> / <sub>32</sub> x 54 <sup>1</sup> / <sub>32</sub> x 13	37 <sup>1</sup> / <sub>32</sub> x 54 <sup>1</sup> / <sub>32</sub> x 13	37 <sup>1</sup> / <sub>32</sub> x 54 <sup>1</sup> / <sub>32</sub> x 13
Unit Data	ODU Weight (Net/Shipping)	lbs	147.7/163.1	152.1/165.3	152.1/165.3	192/216	192/216	218/243
	Minimum Connectable IDUs	Qty	2	2	2	2	2	2
	Maximum Connectable Indoor Units	Qty	2	3	4	8	8	8
Unit Data	Max Total IDU Connected Capacity	Btu/h	24,000	33,000	40,000	65,000	73,000	81,000
Standard Warranty					5 Years Parts, 7 Years Compressor			
Limited Registered Warranty*					10 Years Parts, 10 Years Compressor			

Note:

1. Max heating capacity of non-ducted system with air entering the indoor unit at 21.1°C dry bulb (DB) and 15.6°C wet bulb (WB)

2. Values when matched with non-ducted units only

\*For Limited Registered Warranty, the product needs to be registered within 60 days of startup at [www.lg.ca](http://www.lg.ca)

## MULTI F OUTDOOR UNITS



## MULTI F MAX OUTDOOR UNITS

**LGRED°**



# LGRED° Systems With LGRED° Heat Technology

- SINGLE ZONE
- MULTI ZONE

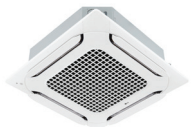
## SINGLE ZONE SOLUTIONS

LG single zone solutions combine outstanding heating and cooling performance with styling that works in any home design.



### Prestige

● 9,000–24,000 Btu/h



### Ceiling Cassette

● 18,000–48,000 Btu/h



### Low Static

● 18,000 Btu/h



### High Static

● 24,000–48,000 Btu/h



### Vertical AHU

● 18,000–48,000 Btu/h



LMU180HHV  
LMU240HHV  
LMU300HHV

## MULTI-ZONE SOLUTIONS

**Multi F with LGRED°** systems use a single inverter-driven outdoor unit to efficiently provide heating and cooling. Multi F with LGRED° provides powerful and personalized performance for larger-scale heating and cooling needs or a whole home, up to six rooms. **Capacity Range: 18,000 to 48,000 Btu/h**



LMU361HHV  
LMU421HHV  
LMU480HHV

### Indoor Units for use with Multi F outdoor units:

#### Wall Mounted



### Gloss White

● 7,000 - 24,000 Btu/h



### Artcool Mirror

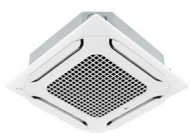
● 9,000–18,000 Btu/h



### Low Wall Console

● 9,000–15,000 Btu/h

#### Ceiling Mounted and Ducted



### Ceiling Cassette

● 7,000–18,000 Btu/h



### Low Static

● 9,000–18,000 Btu/h



### High Static

● 24,000–36,000 Btu/h



### Vertical AHU

● 18,000–36,000 Btu/h

## LG Electronics Canada, Inc.

Air Conditioning Technologies

20 Norelco Drive, North York, ON, M9L 2X6

[www.lg.ca](http://www.lg.ca)



Distributed by