

Job Name/Location:

Tag #:

Date:

For: ☐ File ☐ Resubmit

PO No.:

☐ Approval ☐ Other

Architect:

GC:

Engr:

Mech:

Rep:

(Company)

(Project Manager)

PRVC2

Low Ambient Control Kit for
Multi V IV and Multi V 5 ODU's



Electrical:

Power Supply	24VDC
--------------	-------

Environmental:

Operating Temp Ranges (°F)	
Cooling	
Outdoor:	95
Indoor:	81
Heating	
Outdoor:	45
Indoor:	68

Unit Data:

Dimensions	4" W x 5" H x 1" D
Net Weight	3
Shipping Weight	4

Standard Features:

- Allows control of louvers on top elbow vent of low ambient baffle kit
- Controls from one to three low ambient baffle kits

Required Accessories (sold separately)

One or more of the following Low Ambient Baffle Kits.

- ☐ Low Ambient Baffle Kit - ZLABKA01A
- ☐ Low Ambient Baffle Kit - ZLABKA03A
- ☐ Low Ambient Baffle Kit - ZLABKA51A
- ☐ Low Ambient Baffle Kit - ZLABKA52A

Connectivity:

Outdoor Unit	Power and communication
Inputs	
Digital	Dry contact
Analog	0 to 10VDC
Outputs	
Digital	Operating and error status relay (250V, 1A)
Analog	0 to 10VDC

Cabling Specifications:

Type	stranded, shielded copper cable
Size	AWG 22

AWG - American Wire Gauge

Notes:

1. Must follow installation instructions in the applicable LG installation manual.

For continual product development, LG reserves the right to change specifications without notice.

LG Electronics U.S.A., Inc., Englewood Cliffs, NJ. All rights reserved. "LG Life's Good" is a registered trademark of LG Corp. /www.lghvac.com

PRVC2

Low Ambient Control Kit for
Multi V IV and Multi V 5 ODU's

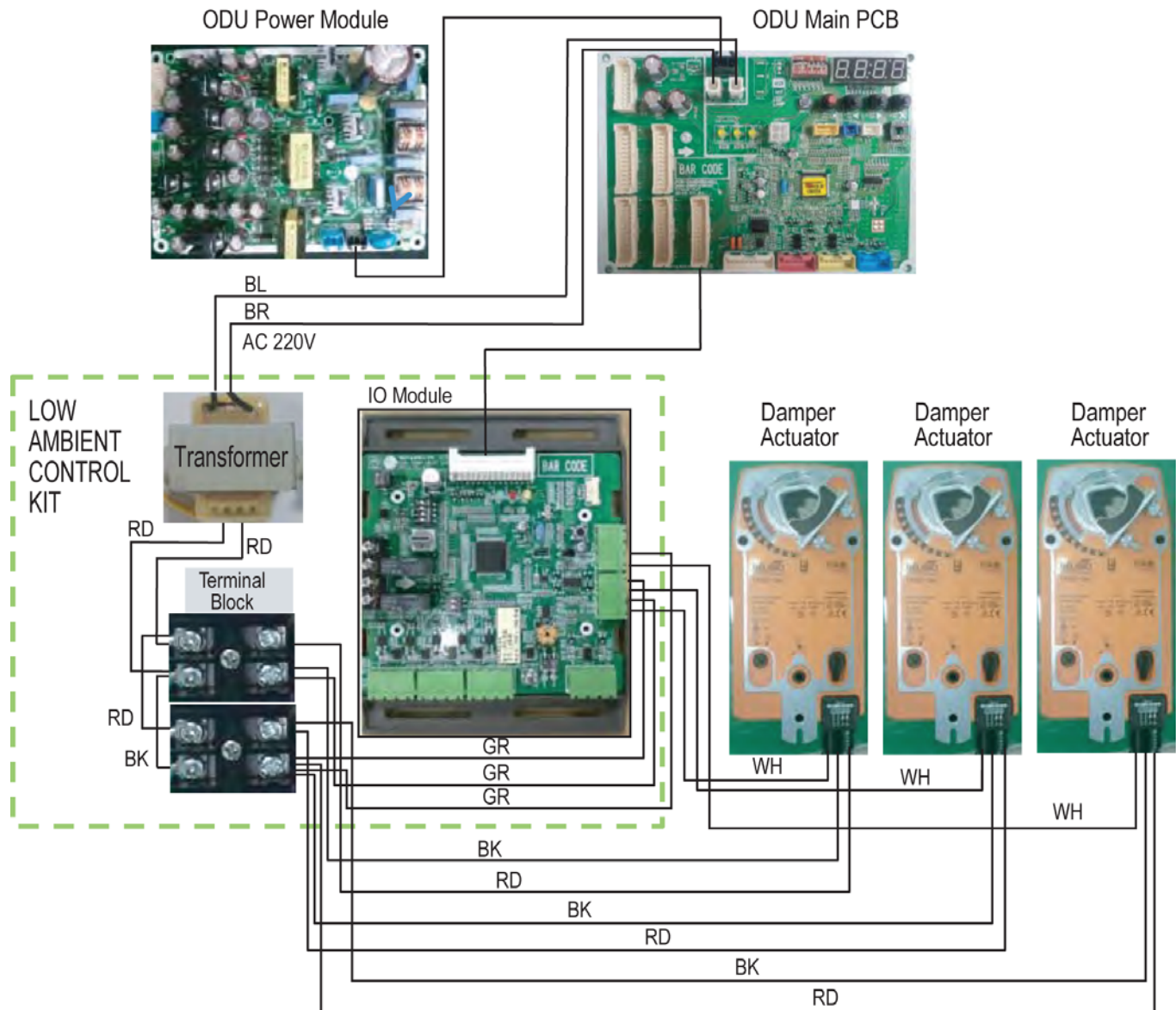
**LG**

Life's Good

Tag #:

Date:

PO No.:

Multi V IV Wiring

Note: The low ambient control kit can control from one to three damper actuators. One damper actuator is required per outdoor unit.

PRVC2

Low Ambient Control Kit for
Multi V IV and Multi V 5 ODU's



LG

Life's Good

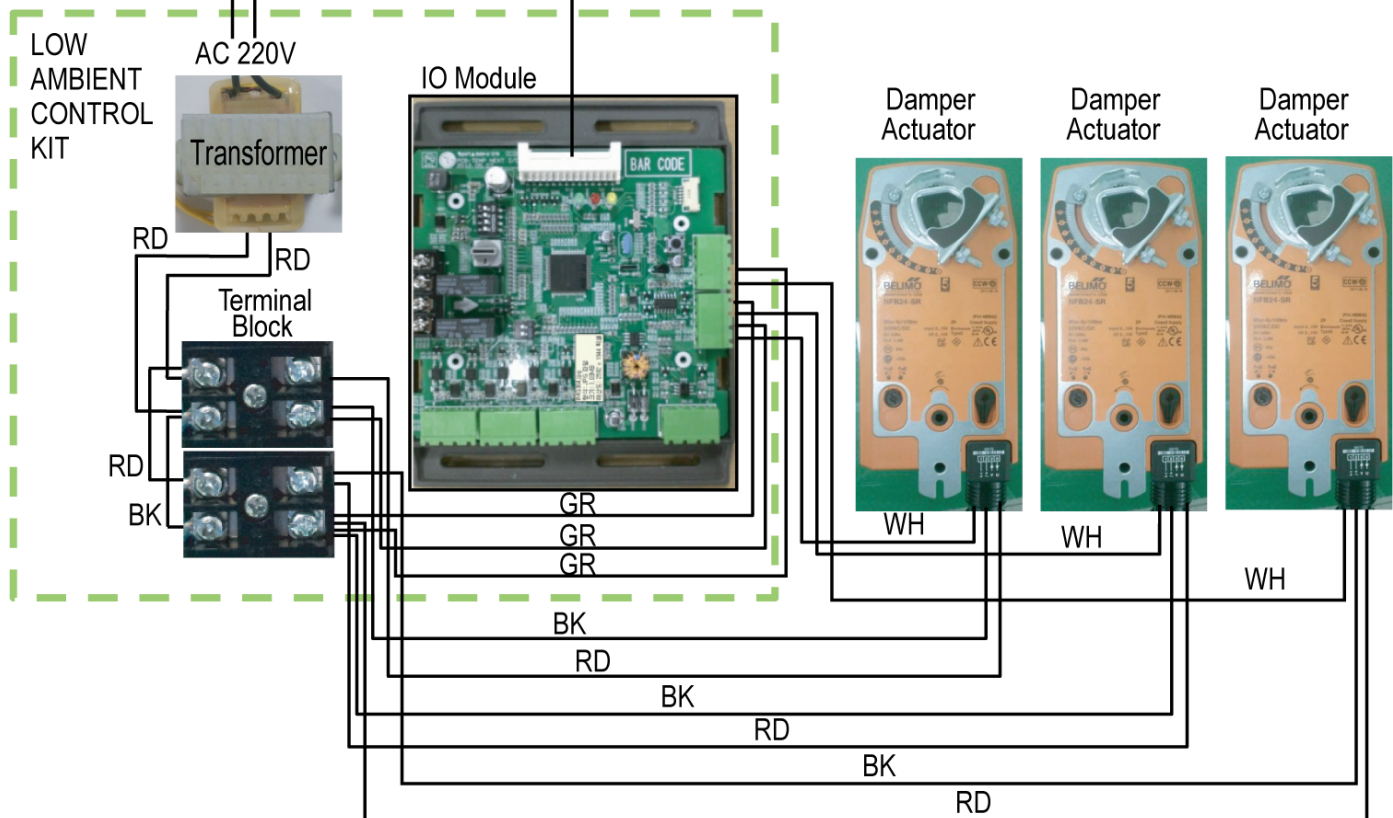
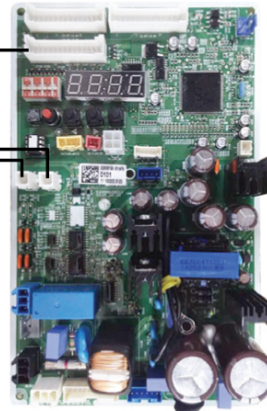
Tag #:

Date:

PO No.:

Multi V 5 Wiring

ODU PCB



Note: The low ambient control kit can control from one to three damper actuators. One damper actuator is required per outdoor unit.