

Date:

For: ☐ File ☐ Resubmit

PO No.:

☐ Approval ☐ Other _____

Architect:

GC:

Engr:

Mech:

Rep:

(Company)

(Project Manager)

ARUM216CTE5

Multi V™ 5 Single Frame 575V

18.0 Ton Outdoor Unit for Heat Pump and Heat Recovery

**Performance:****Cooling Mode:**

Nominal Capacity (Btu/h)	216,000
Power Input ¹ (kW)	15.37

Heating Mode:

Nominal Capacity (Btu/h)	243,000
Power Input ¹ (kW)	17.75

Nominal Capacity is outside the scope of AHRI Standard 1230 and based on the following conditions:

Indoor: 80°F DB / 67°F WB

Indoor: 70°F DB

Outdoor: 95°F DB

Outdoor: 47°F DB / 43°F WB

Electrical:

Power Supply (V/Hz/Ø)	575/60/3
MOP (A)	53.8
MCA (A)	38.3
Rated Amps (A)	34.4
Compressor A (A)	15.5
Compressor B (A)	13.9
Fan (A)	5.0

Piping:

Refrigerant Charge (lbs)	37.5
Liquid Line (in, OD)	5/8 Braze
Low Pressure Vapor Line (in,	1-1/8 Braze
High Pressure Vapor Line (in, OD) (HR Only)	1-1/8 Braze

Standard Features:

- Advanced Smart Load Control
- Intelligent Heating
- HiPDR (high pressure oil return)
- Smart Oil Control
- Night Quiet Operation
- Fault Detection and Diagnosis
- Active Refrigerant Control
- Variable Path Heat Exchanger
- Subcooling and Vapor Injection Control
- Liquid Cooled Inverter Controller

Optional Accessories:

- ☐ Air Guide - ZAGDKA52A (1 required)
- ☐ Low Ambient Baffle Kit - ZLABKA52A (1), Control Kit - PRVC2 (1 per system)
- ☐ Hail Guard Kit - ZHGDKA52A (1 Required)

****Cooling operating range can be extended to -13°F if the optional low ambient baffle kit and****low ambient control kit are installed. This is the range in which the unit can operate as continuous operation.**

LG Electronics Canada, Inc. 20 Norelco Drive, North York, ON M9L2X6/www.lgvr.ca

© LG Electronics Canada, Inc. 20 Norelco Drive, North York, ON. All rights reserved. "LG Life's Good" is a registered trademark of LG Corp. /www.lgvr.ca

Operating Range:

Cooling (°F DB)**	5-122
Heating (°F WB)	-22 - 61
Synchronous Operation - Cooling Based	14 - 81
Synchronous Operation - Heating Based	14 - 61

Unit Data:

Refrigerant Type	R410A
Refrigerant Control	EEV
Max Number of Indoor Units ²	35
Sound Pressure ³ dB(A)	64.0
Net Unit Weight (lbs)	681
Shipping Weight (lbs)	709
Communication Cable ⁴ (No x AWG)	2 x 18
Heat Exchanger Coating	Black Coated Fin™

Compressor:

Type	HSS DC Scroll
Quantity	2
Oil/Type	PVE/FVC68D

Fan:

Type	Propeller
Quantity	2
Motor/Drive	Brushless Digitally Controlled/Direct
Air Flow Rate (CFM)	11,300

Notes:

1. For AHRI ratings, refer to the AHRI website <http://www.ahridirectory.org>.
2. The combination ratio must be between 50 – 130%.
3. Sound Pressure levels are tested in an anechoic chamber under ISO Standard 3745.
4. Communication cable between ODU and IDU(s) must be 2-conductor, 18 AWG, twisted, stranded, and shielded. Ensure the communication cable shield is properly grounded to the Master ODU chassis only. Do not ground the communication cable at any other point. Wiring must comply with all applicable local and national codes.
5. Nominal data is rated 0 ft above sea level, with 25 ft of refrigerant line per indoor unit and a 0 ft level difference between outdoor and indoor units.
6. All capacities are net with a combination ratio between 95-105%.
7. Power wiring cable size must comply with the applicable local and national code.
8. The voltage tolerance is +/- 10%.



ARUM216CTE5

Multi V™ 5 Single Frame 575V

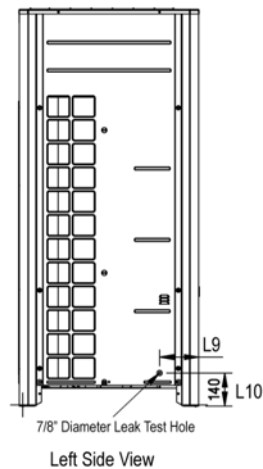
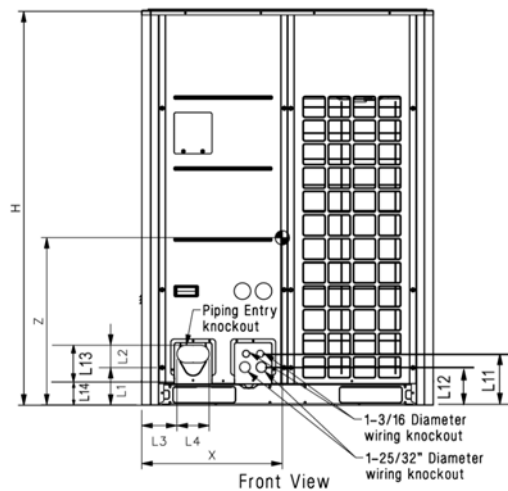
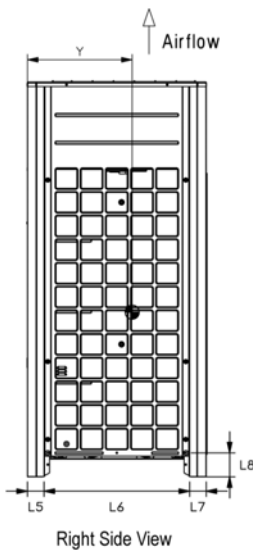
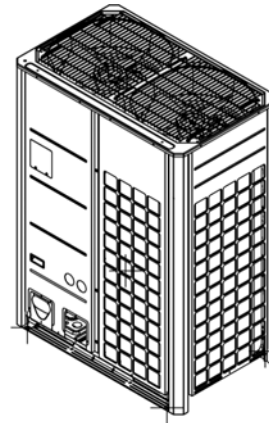
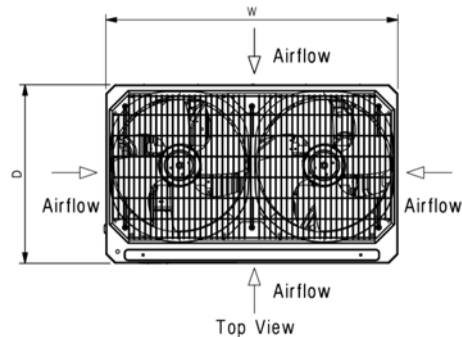
18.0 Ton Outdoor Unit for Heat Pump and Heat Recovery



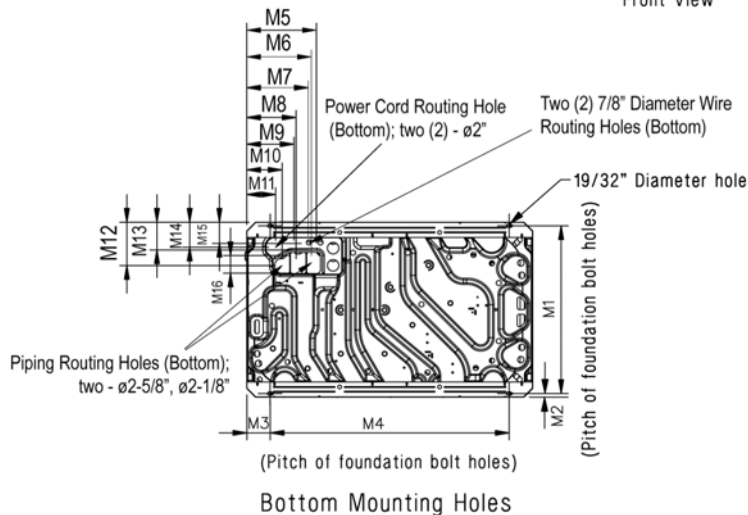
Tag #:

Date:

PO No.:



W	48-13/16"
H	66-17/32"
D	29-29/32"
L1	6-5/16"
L2	3-3/4"
L3	5-29/32"
L4	5-13/32"
L5	2-25/32"
L6	24-9/32"
L7	2-25/32"
L8	4-1/32"
L9	6-1/2"
L10	5-9/16"
L11	8-5/8"
L12	6-7/16"
L13	9-15/16"
L14	3-5/8"



M1	28-25/32"
M2	5/8"
M3	3-15/16"
M4	40-15/16"
M5	11-15/16"
M6	11-1/16"
M7	10-1/2"
M8	8-7/16"
M9	8-1/8"
M10	6-1/16"
M11	4-15/16"
M12	7-1/2"
M13	4-13/16"
M14	4-5/16"
M15	3-5/8"
M16	3"

Center of Gravity

X	23-7/32"
Y	15-5/8"
Z	25-9/16"

All dimensions have a tolerance of ± 0.25 in.
[Unit: inch]

= Center of Gravity