

Date: _____ For: File Resubmit
 PO No.: _____ Approval Other _____
 Architect: _____ GC: _____
 Engr: _____ Mech: _____
 Rep: _____
(Company) (Project Manager)



ARUN024GSS4
 Multi V™ S Heat Pump
 2.0 Ton Outdoor Unit



Performance:

Cooling Mode:

| | |
|-------------------------------|--------|
| Rated Capacity (Btu/h) | 24,000 |
| Power Input ¹ (kW) | 2.15 |

Heating Mode:

| | |
|-------------------------------|--------|
| Rated Capacity (Btu/h) | 27,000 |
| Power Input ¹ (kW) | 2.54 |

Rated Capacity is based on the following conditions:

| | |
|---------------------------|----------------------------|
| Cooling: | Heating: |
| Indoor: 80°F DB / 67°F WB | Indoor: 70°F DB |
| Outdoor: 95°F DB | Outdoor: 47°F DB / 43°F WB |

Electrical:

| | |
|-----------------------|--------------|
| Power Supply (V/Hz/Ø) | 208-230/60/1 |
| MOP (A) | 30 |
| MCA (A) | 19.6 |
| Rated Amps (A) | |
| Compressor (A) | 15.3 |
| Fan (A) | 0.5 |

Piping:

| | |
|--------------------------|-----|
| Refrigerant Charge (lbs) | 4.0 |
| Liquid Line (in, OD) | 3/8 |
| Vapor Line (in, OD) | 5/8 |

Standard Features:

- Night Quiet Operation
- Fault Detection and Diagnosis

Optional Accessories:

- Low Ambient Baffle Kit - ZLABGP04A (1)
- Drain Pan Heater - PQSH1200

****Installation of an optional Low Ambient Wind Baffle Kit will allow operation down to -9.9°F in cooling mode.**

Operating Range:

| | |
|-------------------|----------|
| Cooling (°F DB)** | 23 - 122 |
| Heating (°F WB) | -4 - 61 |

Unit Data:

| | |
|---|----------|
| Refrigerant Type | R410A |
| Refrigerant Control | EEV |
| Max Number of Indoor Units ² | 4 |
| Sound Pressure ³ dB(A) | 50 |
| Net Unit Weight (lbs) | 159 |
| Shipping Weight (lbs) | 176 |
| Communication Cable ⁴ (No x AWG) | 2 x 18 |
| Heat Exchanger Coating | GoldFin™ |

Compressor:

| | |
|----------|------------|
| Type | Rotary |
| Quantity | 1 |
| Oil/Type | PVE/FVC68D |

Fan:

| | |
|---------------------|---------------------------------------|
| Type | Axial Flow Fan |
| Quantity | 1 |
| Motor/Drive | Brushless Digitally Controlled/Direct |
| Air Flow Rate (CFM) | 2,119 |

Notes:

- 1.For AHRI ratings, refer to the AHRI website <http://www.ahridirectory.org>.
- 2.The combination ratio must be between 50 – 130%.
- 3.Sound Pressure levels are tested in an anechoic chamber under ISO Standard 3745.
- 4.All power/communication cable to be minimum 18 American wire gage (AWG), 4-conductor, stranded, shielded or unshielded wire and must comply with applicable local and national code. If shielded, the wire must be grounded to the chassis at the outdoor unit only.
- 5.Nominal data is rated 0 ft above sea level, with 25 ft of refrigerant line per indoor unit and a 0 ft level difference between outdoor and indoor units. All capacities are net with a combination ratio between 95-105%.
- 6.Power wiring cable size must comply with the applicable local and national codes.
- 7.The voltage tolerance is ± 10%.



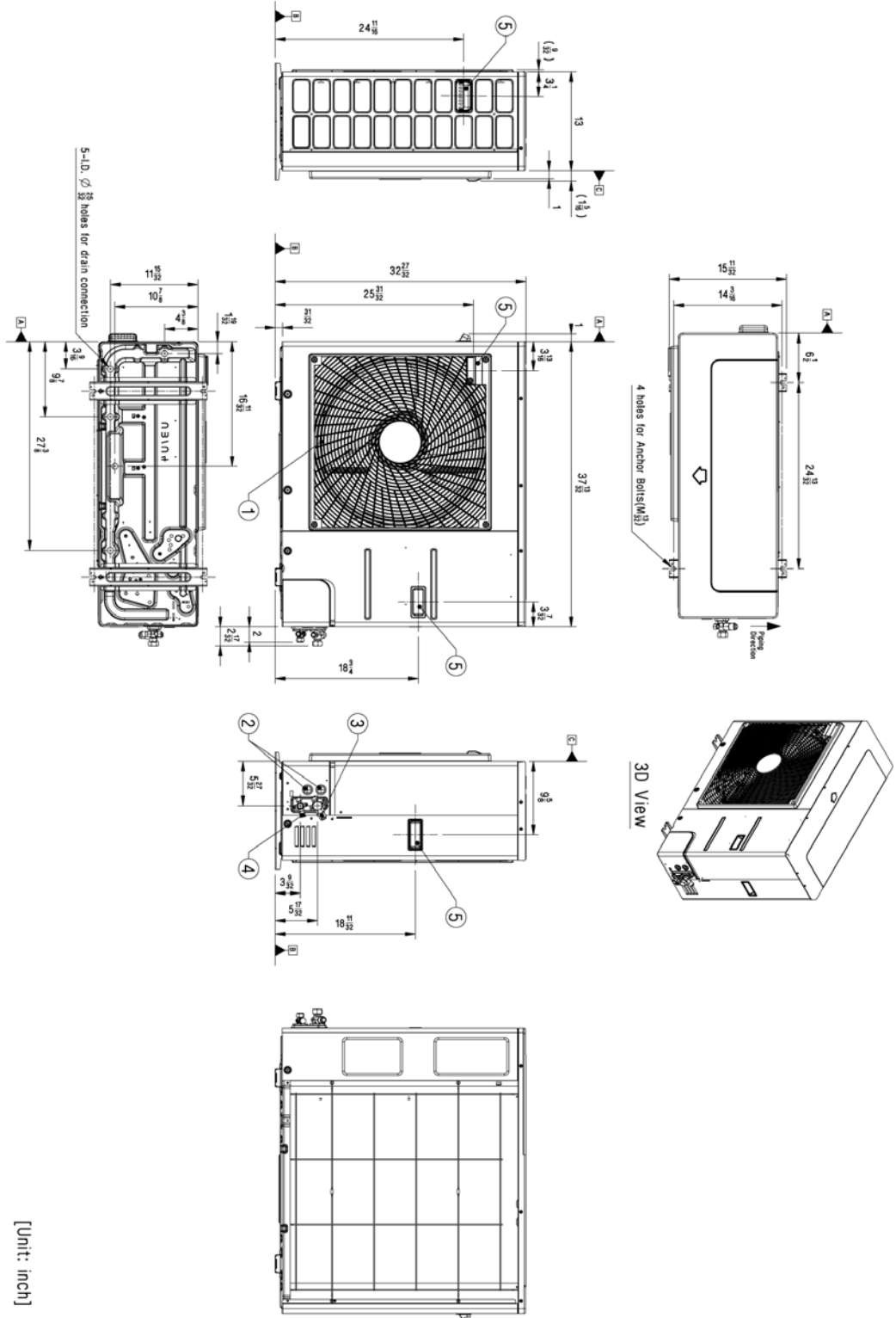
ARUN024GSS4
 Multi V™ S Heat Pump
 2.0 Ton Outdoor Unit



Tag #:

Date:

PO No.:



| Symbols | | Note | |
|---------|------------------|------|--|
| | Piping Direction | 1. | Unit should be installed in compliance with the installation manual in the product box. |
| | Datum line | 2. | Unit should be grounded in accordance with the local regulations or applicable national codes. |
| | | 3. | All electrical components and materials to be supplied from the site must comply with the local regulations or international codes. |
| | | 4. | Electric characteristics chapter should be considered for electrical work and design. Especially the power cable and circuit breaker should be selected in accordance with that. |
| | | 5 | Handle |
| | | 4 | Liquid Pipe Connection |
| | | 3 | Gas Pipe Connection |
| | | 2 | Power and communication cable Hole |
| | | 1 | Air Outlet |
| No. | Part Name | | Description |

[Unit: inch]